

Norton™
PartitionMagic® 8.0

Includes BootMagic®

Quick Start Guide

Norton™ PartitionMagic® 8.0

Quick Start Guide

Published May 2004

© 1994-2004 Symantec Corporation. All rights reserved. This product and/or its use may be covered by one or more of the following patents:

5,675,769; 5,706,472; 5,930,831; 6,088,778; 6,108,697; 6,108,759;
6,173,291; 6,178,487; 6,178,503; 6,185,575; 6,185,666; 6,253,300;
6,330,653; and 6,377,958. Additional patents may be pending.

Part Number: 10256727

The entire risk of the use or the result of the use of this software and documentation remains with the user. No part of this documentation may be reproduced in any means, electronic or mechanical, for any purpose, except as expressed in the Software License Agreement.

This software and documentation are copyrighted. All other rights, including ownership of the software, are reserved to Symantec Corporation. BootMagic, Drive Image, Norton PartitionMagic, Symantec, and the Symantec mark are trademarks or registered trademarks of Symantec Corporation in the United States and elsewhere. DOS, Microsoft, Windows, and Windows NT are trademarks or registered trademarks of Microsoft Corporation. All other brand and product names are trademarks or registered trademarks of the respective owners.

Symantec Documentation Feedback

To give suggestions for improving the Norton PartitionMagic documentation (quick start guide, online help, electronic user guide, or readme files), e-mail your comments to orem_documentation@symantec.com with Norton PartitionMagic 8.0 in the subject line. Specific suggestions are more helpful than general comments. Symantec will use the feedback to improve documentation for future Symantec products. Because our staff is limited, we cannot provide personal responses to every message we receive, but we do appreciate hearing from our users. All feedback is given careful consideration for future improvements to Symantec documentation or software.

Symantec Corporation

20330 Stevens Creek Boulevard • Cupertino, CA 95014 • U.S.A.

SYMANTEC SOFTWARE LICENSE AGREEMENT

Norton PartitionMagic

IMPORTANT: PLEASE READ THE TERMS AND CONDITIONS OF THIS LICENSE AGREEMENT CAREFULLY BEFORE USING THE SOFTWARE. SYMANTEC CORPORATION AND/OR ITS SUBSIDIARIES (“SYMANTEC”) IS WILLING TO LICENSE THE SOFTWARE TO YOU AS THE INDIVIDUAL, THE COMPANY, OR THE LEGAL ENTITY THAT WILL BE UTILIZING THE SOFTWARE (REFERENCED BELOW AS “YOU” OR “YOUR”) ONLY ON THE CONDITION THAT YOU ACCEPT ALL OF THE TERMS OF THIS LICENSE AGREEMENT. THIS IS A LEGAL AND ENFORCEABLE CONTRACT BETWEEN YOU AND SYMANTEC. BY OPENING THIS PACKAGE, BREAKING THE SEAL, CLICKING THE “ACCEPT” OR “YES” BUTTON OR OTHERWISE INDICATING ASSENT ELECTRONICALLY, OR LOADING THE SOFTWARE, YOU AGREE TO THE TERMS AND CONDITIONS OF THIS AGREEMENT. IF YOU DO NOT AGREE TO THESE TERMS AND CONDITIONS, CLICK THE “I DO NOT ACCEPT” OR “NO” BUTTON OR OTHERWISE INDICATE REFUSAL, MAKE NO FURTHER USE OF THE SOFTWARE, AND CONTACT SYMANTEC CUSTOMER SERVICE FOR INFORMATION ON HOW TO OBTAIN A REFUND OF THE MONEY YOU PAID FOR THE SOFTWARE (LESS SHIPPING, HANDLING, AND ANY APPLICABLE TAXES) AT ANY TIME DURING THE SIXTY (60) DAY PERIOD FOLLOWING THE DATE OF PURCHASE.

1. **License.** The software and documentation that accompanies this license (collectively the “Software”) is the property of Symantec, or its licensors, and is protected by copyright law. While Symantec continues to own the Software, You will have certain rights to use the Software after Your acceptance of this license. This license governs any releases, revisions, or enhancements to the Software that Symantec may furnish to You. Except as may be modified by a Symantec license certificate, license coupon, or license key (each a “License Module”) that accompanies, precedes, or follows this license, Your rights and obligations with respect to the use of this Software are as follows.

You may:

A. use one copy of the Software on or in conjunction with a single computer that is owned or leased by You. Once the Software has been accessed by one computer, it may not be used on additional computers without purchasing additional licenses. Once You have used the Software, You may use the Software on a replacement computer, provided that the Software is completely removed from the computer being replaced and such computer is permanently decommissioned. If a License Module accompanies, precedes, or follows this license, You may make the number of copies of the Software licensed to You by Symantec as provided in Your License Module. Your License Module shall constitute proof of Your right to make such copies;

- B. make one copy of the Software for archival purposes, or copy the Software onto the hard disk of Your computer and retain the original for archival purposes;
- C. use the Software on a network, provided that You have a licensed copy of the Software for each computer that can access the Software over that network;
- D. use the Software for internal business purposes only and may not use the Software on behalf of a client or customer;
- E. after written notice to Symantec, transfer the Software on a permanent basis to another person or entity, provided that You retain no copies of the Software and the transferee agrees to the terms of this license; and
- F. use the Software in accordance with any additional permitted uses set forth below.

You may not:

- A. copy the printed documentation that accompanies the Software;
- B. sublicense, rent, or lease any portion of the Software; reverse engineer, decompile, disassemble, modify, translate, make any attempt to discover the source code of the Software, or create derivative works from the Software;
- C. use the Software as part of a facility management, timesharing, service provider, or service bureau arrangement;
- D. use a previous version or copy of the Software after You have received and installed a disk replacement set or an upgraded version. Upon upgrading the Software, all copies of the prior version must be destroyed;
- E. use a later version of the Software than is provided herewith unless You have purchased upgrade insurance or have otherwise separately acquired the right to use such later version;
- F. use, if You received the software distributed on media containing multiple Symantec products, any Symantec software on the media for which You have not received a permission in a License Module;
- G. use the Software in any manner not authorized by this license; nor
- H. use the Software in any manner that contradicts any additional restrictions set forth below.

2. Content Updates. Certain Software utilize content that is updated from time to time (including but not limited to the following Software: antivirus software utilize updated virus definitions; content filtering software utilize updated URL lists; some firewall software utilize updated firewall rules; and vulnerability assessment products utilize updated vulnerability data; these updates are collectively referred to as “Content Updates”). You shall have the right to obtain Content Updates for any period for which You have purchased maintenance, except for those Content Updates that Symantec elects

to make available by separate paid subscription, or for any period for which You have otherwise separately acquired the right to obtain Content Updates. Symantec reserves the right to designate specified Content Updates as requiring purchase of a separate subscription at any time and without notice to You; provided, however, that if You purchase maintenance hereunder that includes particular Content Updates on the date of purchase, You will not have to pay an additional fee to continue receiving such Content Updates through the term of such maintenance even if Symantec designates such Content Updates as requiring separate purchase. This License does not otherwise permit the licensee to obtain and use Content Updates.

3. Product Installation and Required Activation. There are technological measures in this Software that are designed to prevent unlicensed or illegal use of the Software. You agree that Symantec may use these measures to protect Symantec against software piracy. This Software may contain enforcement technology that limits the ability to install and uninstall the Software on a computer to not more than a finite number of times for a finite number of computers. This License and the Software containing enforcement technology require activation as further set forth in the documentation. The Software will only operate for a finite period of time prior to Software activation by You. During activation, You will provide Your unique product key accompanying the Software and computer configuration in the form of an alphanumeric code over the Internet to verify the authenticity of the Software. If You do not complete the activation within the finite period of time set forth in the documentation, or as prompted by the Software, the Software will cease to function until activation is complete, which will restore Software functionality. In the event that You are not able to activate the Software over the Internet, or through any other method specified during the activation process, You may contact Symantec Customer Support using the information provided by Symantec during activation, or as may be set forth in the documentation.

4. Sixty (60) Day Money Back Guarantee. If You are the original licensee of this copy of the Software and are not completely satisfied with it for any reason, please contact Symantec Customer Service for a refund of the money You paid for the Software (less shipping, handling, and any applicable taxes) at any time during the sixty (60) day period following the date of purchase.

5. Limited Warranty. Symantec warrants that the media on which the Software is distributed will be free from defects for a period of sixty (60) days from the date of delivery of the Software to You. Your sole remedy in the event of a breach of this warranty will be that Symantec will, at its option, replace any defective media returned to Symantec within the warranty period or refund the money You paid for the Software. Symantec does not warrant that the Software will meet Your requirements or that operation of the Software will be uninterrupted or that the Software will be error-free.

TO THE MAXIMUM EXTENT PERMITTED BY APPLICABLE LAW, THE ABOVE WARRANTY IS EXCLUSIVE AND IN LIEU OF ALL OTHER WARRANTIES, WHETHER EXPRESS OR IMPLIED, INCLUDING THE

IMPLIED WARRANTIES OF MERCHANTABILITY, FITNESS FOR A PARTICULAR PURPOSE, AND NONINFRINGEMENT OF INTELLECTUAL PROPERTY RIGHTS. THIS WARRANTY GIVES YOU SPECIFIC LEGAL RIGHTS. YOU MAY HAVE OTHER RIGHTS, WHICH VARY FROM STATE TO STATE AND COUNTRY TO COUNTRY.

6. Disclaimer of Damages. SOME STATES AND COUNTRIES, INCLUDING MEMBER COUNTRIES OF THE EUROPEAN ECONOMIC AREA, DO NOT ALLOW THE LIMITATION OR EXCLUSION OF LIABILITY FOR INCIDENTAL OR CONSEQUENTIAL DAMAGES, SO THE BELOW LIMITATION OR EXCLUSION MAY NOT APPLY TO YOU.

TO THE MAXIMUM EXTENT PERMITTED BY APPLICABLE LAW AND REGARDLESS OF WHETHER ANY REMEDY SET FORTH HEREIN FAILS OF ITS ESSENTIAL PURPOSE, IN NO EVENT WILL SYMANTEC OR ITS LICENSORS BE LIABLE TO YOU FOR ANY SPECIAL, CONSEQUENTIAL, INDIRECT, OR SIMILAR DAMAGES, INCLUDING ANY LOST PROFITS OR LOST DATA ARISING OUT OF THE USE OR INABILITY TO USE THE SOFTWARE EVEN IF SYMANTEC HAS BEEN ADVISED OF THE POSSIBILITY OF SUCH DAMAGES.

IN NO CASE SHALL SYMANTEC'S OR ITS LICENSORS' LIABILITY EXCEED THE PURCHASE PRICE FOR THE SOFTWARE. The disclaimers and limitations set forth above will apply regardless of whether You accept the Software.

7. U.S. Government Restricted Rights. RESTRICTED RIGHTS LEGEND. All Symantec products and documentation are commercial in nature. The software and software documentation are "Commercial Items," as that term is defined in 48 C.F.R. section 2.101, consisting of "Commercial Computer Software" and "Commercial Computer Software Documentation," as such terms are defined in 48 C.F.R. section 252.227-7014(a)(5) and 48 C.F.R. section 252.227-7014(a)(1), and used in 48 C.F.R. section 12.212 and 48 C.F.R. section 227.7202, as applicable. Consistent with 48 C.F.R. section 12.212, 48 C.F.R. section 252.227-7015, 48 C.F.R. section 227.7202 through 227.7202-4, 48 C.F.R. section 52.227-14, and other relevant sections of the Code of Federal Regulations, as applicable, Symantec's computer software and computer software documentation are licensed to United States Government end users with only those rights as granted to all other end users, according to the terms and conditions contained in this license agreement. Manufacturer is Symantec Corporation, 20330 Stevens Creek Blvd., Cupertino, CA 95014.

8. Export Regulation. Certain Symantec products are subject to export controls by the U.S. Department of Commerce (DOC), under the Export Administration Regulations (EAR) (see www.bxa.doc.gov). Violation of U.S. law is strictly prohibited. You agree to comply with the requirements of the EAR and all applicable international, national, state, regional and local laws, and regulations, including any applicable import and use

restrictions. Symantec products are currently prohibited for export or re-export to Cuba, North Korea, Iran, Iraq, Libya, Syria and Sudan or to any country subject to applicable trade sanctions. You agree not to export, or re-export, directly or indirectly, any product to any country outlined in the EAR, nor to any person or entity on the DOC Denied Persons, Entities and Unverified Lists, the U.S. Department of State's Debarred List, or on the U.S. Department of Treasury's lists of Specially Designated Nationals, Specially Designated Narcotics Traffickers, or Specially Designated Terrorists. Furthermore, You agree not to export, or re-export, Symantec products to any military entity not approved under the EAR, or to any other entity for any military purpose, nor will it sell any Symantec product for use in connection with chemical, biological, or nuclear weapons or missiles capable of delivering such weapons.

9. General. If You are located in North America or Latin America, this Agreement will be governed by the laws of the State of California, United States of America. Otherwise, this Agreement will be governed by the laws of England and Wales. This Agreement and any related License Module is the entire agreement between You and Symantec relating to the Software and: (i) supersedes all prior or contemporaneous oral or written communications, proposals, and representations with respect to its subject matter; and (ii) prevails over any conflicting or additional terms of any quote, order, acknowledgment, or similar communications between the parties. This Agreement shall terminate upon Your breach of any term contained herein and You shall cease use of and destroy all copies of the Software. The disclaimers of warranties and damages and limitations on liability shall survive termination. Software and documentation is delivered Ex Works California, U.S.A. or Dublin, Ireland respectively (ICC INCOTERMS 2000). This Agreement may only be modified by a License Module that accompanies this license or by a written document that has been signed by both You and Symantec. Should You have any questions concerning this Agreement, or if You desire to contact Symantec for any reason, please write to: (i) Symantec Customer Service, 555 International Way, Springfield, OR 97477, U.S.A., (ii) Symantec Authorized Service Center, Postbus 1029, 3600 BA Maarssen, The Netherlands, or (iii) Symantec Customer Service, 1 Julius Ave, North Ryde, NSW 2113, Australia.

Table of Contents

Chapter 1: Getting Started

What is PartitionMagic?	1
PartitionMagic System Requirements	2
Installing PartitionMagic	4
Creating Rescue Diskettes	5
Before Running PartitionMagic	5
Running PartitionMagic	6

Chapter 2: PartitionMagic Basics

PartitionMagic Main Window	7
Disk Map	8
Partition List	9
Rescue Disk Main Window	9
Process Overview	10
Selecting a Hard Disk and Partition	11
USB, USB2, and FireWire Support	11
Removable Media and Dynamic Disks	12
Selecting an Operation	12
Undoing an Operation	13
Viewing Pending Operations	13
Applying Changes to Your System	14
Applying Changes in Windows vs. Boot Mode	14

Chapter 3: Using BootMagic

Introduction	15
BootMagic System Requirements	16
Installing BootMagic	16

Configuring BootMagic	18
Disabling BootMagic	19

Chapter 4: Service and Support Solutions

Customer service	21
Technical support	22
Support for old and discontinued versions	23
Subscription policy	23
Worldwide service and support	23
Service and support offices	24

Index

Getting Started

This chapter includes the following information:

- What is PartitionMagic?
- PartitionMagic System Requirements
- Installing PartitionMagic
- Before Running PartitionMagic
- Running PartitionMagic

What is PartitionMagic?

With Norton™ PartitionMagic®, you can quickly and easily create partitions on your hard disks for storing valuable information such as data files, applications, and operating systems. Storing information in separate partitions helps you organize and protect your data and reclaim wasted disk space.

In addition to creating new partitions with PartitionMagic, you can resize, move, copy, label, or convert existing partitions from one file system to another—all without destroying your data. You can also use PartitionMagic to view comprehensive information about your hard disk.

PartitionMagic lets you secure your data by physically separating it from your operating system files. Separate partitions also make backups easy. You can use PartitionMagic to save your data to a separate partition, then back up the data files.

PartitionMagic helps you reliably run multiple operating systems on the same computer. PartitionMagic includes a wizard to help you install another operating system, and BootMagic® (included with Norton PartitionMagic) is a powerful boot manager that lets you choose which operating system you want to use when starting your computer.

Because of limitations with the FAT file system, as much as 40 percent of your hard disk space can be wasted. PartitionMagic reclaims wasted space quickly and safely by using more efficient partition sizes.

PartitionMagic lets you experiment with partitions and see how changes would affect your system before you actually apply the changes.

PartitionMagic System Requirements

PartitionMagic for Windows requires a minimum of 70 MB of hard disk space, a CD drive (any speed), a 3.5-inch floppy drive, VGA or higher resolution monitor with a screen area of at least 800 x 600 pixels, and processor and memory requirements as shown.

Operating System	Minimum RAM	Minimum Processor
Windows 95b through Windows 98 SE	32 MB	Pentium/150 MHz or compatible

Operating System	Minimum RAM	Minimum Processor
Windows Me	32 MB	Pentium/150 MHz or compatible
Windows NT 4.0 Workstation with SP6a applied	32 MB*	Pentium/150 MHz or compatible
Windows 2000 Professional	64 MB*	Pentium/150 MHz or compatible
Windows XP	128 MB*	Pentium/233 MHz or compatible

* Resizing NTFS clusters on partitions over 120 GB in size requires 256 MB RAM.

PartitionMagic supports hardware RAID level 0 (disk striping) and RAID level 5 (striping with parity).

PartitionMagic supports external USB, USB2, and FireWire (1394) hard drives under Windows. Operations that are executed in boot mode are not supported on these devices. See “USB, USB2, and FireWire Support” on page 11.

The rescue disk version of PartitionMagic requires a Pentium/150 MHz processor (or faster), a 3.5-inch floppy drive, 8 MB of RAM (16 MB for NTFS partitions; 32 MB recommended for FAT32 partitions; some very large partitions may require up to 256 MB). Microsoft recommends 128 MB RAM for Windows 2000 and Windows XP systems, although the product can run on systems with 64 MB RAM.

Installing PartitionMagic

You must have administrative privileges to install PartitionMagic on a Windows NT, Windows 2000, or Windows XP system.

Installing PartitionMagic 8.0 will not overwrite a previous version, and it will not affect your existing partitions in any way.

PartitionMagic 8.0 installs into its own directory by default.

IMPORTANT! PartitionMagic must be installed on a local drive, not on a network drive.

NOTE Before installing PartitionMagic 8.0 under Windows 2000, ensure you have updated the operating system with the latest Microsoft Service Pack (SP2 or greater).

As a good computing practice, regardless of operating system, run `chkdsk /f` before running Partition Magic to make sure there are no file system errors on the partition.

- 1 Insert the Norton PartitionMagic CD into your CD drive.
- 2 If the installation program does not start automatically, click **Start > Run** on the Windows taskbar. Then type `drive:\AUTORUN`, where *drive* is the drive letter of your CD drive.
- 3 Click **Norton PartitionMagic > Install**, and follow the on-screen installation instructions.

There is sometimes a delay after you click **Install**. If you click it twice, you will start two instances of the installation and will have to cancel the second one.

- 4 After installation is complete, click **Back > Exit** to close the setup screen.

Dynamic disks (disks you can create with the Windows 2000 or Windows XP Disk Management tool) are not supported. You cannot install PartitionMagic on a dynamic disk.

Creating Rescue Diskettes

You can run a DOS version of PartitionMagic or the BootMagic configuration program from the Norton PartitionMagic CD if your computer has the ability to boot from a CD. If your computer cannot boot from a CD, it is recommended that you create rescue diskettes at the end of the Norton PartitionMagic installation. If you do not create rescue disks during the product installation, you can create them later by running the installation program from the Norton PartitionMagic CD.

If your hard disk becomes unbootable or you do not have access to Windows, you can boot your computer and run PartitionMagic from the rescue diskettes. The first is a DOS boot diskette. The second includes a DOS version of the PartitionMagic program. (For double-byte languages, a third rescue disk includes fonts.)

Before Running PartitionMagic

- Close all other applications, including low-level disk utilities (such as virus detection software, defragmenting software like Diskkeeper®, or backup software like Norton GoBack®).
- You should back up your hard disk before using PartitionMagic. While PartitionMagic has been thoroughly tested and is reliable, other factors (such as power failures, operating system bugs, and hardware defects) can put your data at risk. Before using *any* utility that makes extensive changes to your hard disk, you should back up your data.
- Run a file check before running PartitionMagic. Doing so can help you avoid problems.

Running PartitionMagic

IMPORTANT! PartitionMagic must be run from a local, uncompressed drive. You cannot run PartitionMagic from a network drive.

To run from:	Do this:
Windows Start menu	Click Start > Programs > Norton PartitionMagic 8.0 > Norton PartitionMagic 8.0 .
Windows Explorer	From Windows, click Start > Programs > Windows Explorer . Then right-click any drive object, and click Norton PartitionMagic 8.0 .
DOS	Boot your computer from the Norton PartitionMagic CD to run the DOS version of PartitionMagic.
Rescue disks	Boot your computer from the first rescue disk. Insert the second disk when prompted.

Learn more about using the DOS version of PartitionMagic by reading “Running PartitionMagic from Rescue Disks” in Chapter 1 of the electronic Norton PartitionMagic user guide. (Click **Help > User Guide** to display the user guide.)

PartitionMagic Basics

This chapter includes the following information:

- PartitionMagic Main Window
- Rescue Disk Main Window
- Process Overview
- Selecting a Hard Disk and Partition
- Selecting an Operation
- Undoing an Operation
- Viewing Pending Operations
- Applying Changes to Your System

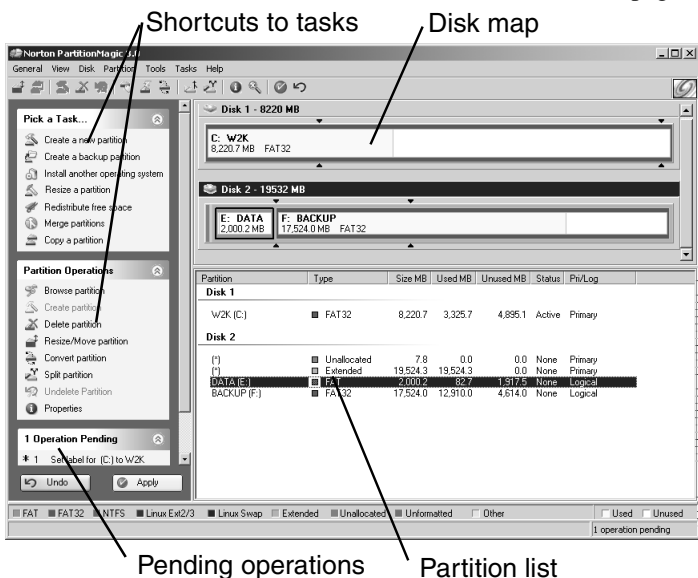
PartitionMagic Main Window

The main window includes an action panel with shortcuts for common tasks and an overview of pending operations, a map of each disk, and a list of the partitions on the selected disk.

The menu bar and a toolbar appear at the top of the window. The menu bar gives you access to all of PartitionMagic's features. The toolbar gives you quick access to commonly used options. When the pointer is over a toolbar, the status bar shows what the button does.

You can customize the main screen by clicking commands on the **View** menu.

Note that the main screen is different if you run PartitionMagic from the rescue disks. See “Rescue Disk Main Window” on page 9.



Disk Map

The disk map shows the partitions approximately to scale and also shows unallocated space (space not assigned to any partition). You can also display hard disks to scale by clicking **View > Scale Disk Map**. Each partition is represented by a different color according to the file system it uses. If the selected hard disk contains logical partitions, the logical partitions are shown within an extended partition.

There are triangle indicators to mark the 2 GB boot boundary and the 1024 cylinder limit. The boundary markers can help you as you create, move, or resize partitions, so you will not make primary partitions unbootable by accident.

Partition List

The partition list displays the following information about each partition: drive letter, volume label, file system type, size, amount of used and unused space in megabytes, status, and whether the partition is a primary or logical partition. If the partition does not have a volume label, “Local Disk” displays next to the drive letter.

An asterisk (*) appears in place of a drive letter for hidden partitions, extended partitions, partitions with file systems not supported by the active operating system, and unallocated space (space not currently assigned to any partition).

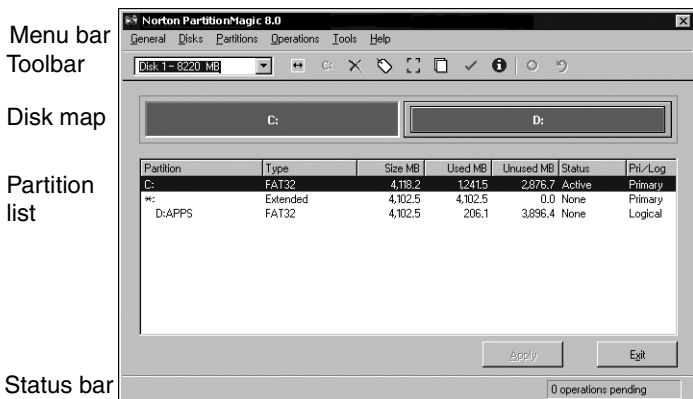
A partition’s status can be active (partition computer boots from), hidden (no drive letter, except under Windows 2000/XP), or none (not active or hidden). Partitions can be hidden by the operating system (which may hide all primary partitions except the active one), or you can hide partitions with PartitionMagic.

Rescue Disk Main Window

The main screen appears different when you run from rescue disks than it does when you run PartitionMagic from Windows.

- **Menu bar** — gives you access to all of PartitionMagic’s features. Be aware that the operations available from the **Partition** menu when you run PartitionMagic under Windows are available under the **Operations** menu when you run from the rescue disks.

- **Toolbar** — gives you quick access to commonly used options and allows you to select the disk you want to operate on.
- **Partition information** — (disk map and partition list) provides both a visual and text description of the partitions on the disk.
- **Status bar** — shows you how many operations are pending; also includes a brief description of the currently selected option.



Process Overview

To complete a task, you must follow this general process:

- 1 Select a hard disk and partition. See “Selecting a Hard Disk and Partition” on page 11.
- 2 Select an operation, and enter details about the changes you want to perform.
- 3 Apply changes to your system. See “Applying Changes to Your System” on page 14.

Selecting a Hard Disk and Partition

You can select a partition without first selecting a hard disk. To select a partition, click it in the disk map or partition list on the main screen.

To select a hard disk, click the title bar on the disk map, or click the disk in the partition list. There are two operations that can be performed on a hard disk: delete all the partitions or display information about the hard disk. When you select a hard disk, its partitions display in the partition list in the main window.

PartitionMagic does not support volume sets, stripe sets, stripe sets with parity, or partitions located on disk mirror/duplex sets configured using Windows NT Disk Administrator. Under Windows 2000/XP, PartitionMagic supports standard partitions located on basic disk sets only.

USB, USB2, and FireWire Support

PartitionMagic supports external USB, USB2, and FireWire (1394) hard drives under Windows. Operations that are executed in boot mode are not supported on these devices.

You can see if an operation will be performed in boot mode by clicking **View > Operations Pending**. If an operation displays with an asterisk (*), it will not work on a USB, USB2, or FireWire drive. If *any* of the queued operations displays with an asterisk, *all* of the queued operations will be applied in boot mode.

You may increase the chances of an operation's being applied under Windows by closing all applications other than PartitionMagic and only working on operations on that drive (as opposed to the USB or FireWire drive *and* drive C:, for example).

Removable Media and Dynamic Disks

PartitionMagic is not designed to work on removable media or Windows 2000/XP dynamic disks.

Selecting an Operation

After you have selected a disk or a partition, you can select an operation using the action panel, toolbar, right-click menu, or menu bar. If an operation cannot be performed on the selected partition, the item appears dimmed on the menu and in the action panel.

- Click one of the operations on the action panel or the toolbar.

When you place the pointer on a toolbar button, a pop-up window displays the button's function.

- In the disk map or partition list, right-click the partition you want to change, then click the desired operation.
- On the menu bar, click **Partition**, then choose the desired operation. (If you are running PartitionMagic from the rescue disks, click **Operations** on the menu bar, then choose the desired operation.)

You can use PartitionMagic to create, resize, move, copy, and label partitions—and more. For more information about the operations on the **Partition** menu, see the online help or *Chapters 3, 4, and 5* of the Norton PartitionMagic user guide.

You can perform some operations using wizards. Wizards combine several operations into one easy process and do some of the thinking for you. Wizards are listed under **Pick a Task** in the action panel on the left side of the PartitionMagic main screen and on the **Tasks** menu. For more information about wizards, see the online help or *Chapter 6* of the Norton PartitionMagic user guide.

Undoing an Operation

To undo or reverse the last operation performed, click **General > Undo Last Change** on the menu bar, press <Ctrl+Z>, or click **Undo** at the bottom of the action panel. If you have performed an operation using a wizard, Undo Last Change will undo all the changes made by the wizard.

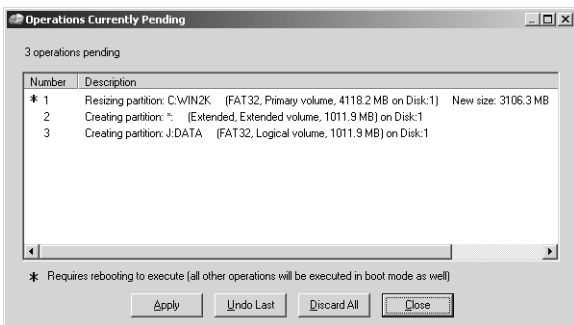
To discard all the pending operations, click **General > Discard all Changes**, or press <Ctrl+D>.

Viewing Pending Operations

PartitionMagic queues operations until you apply them. You can view the operations that are pending at any time at the bottom of the action panel, or you can display a more detailed view.

1 Click **View > Operations Pending**.

The **Operations Currently Pending** dialog appears.



If an asterisk displays to the left of an operation, the operation will be applied in boot mode rather than in Windows. If **any** operation in the list appears with an asterisk, **all** of the operations will be applied in boot mode.

From the list of pending operations, you can choose to undo the last change, discard all changes, apply all changes, or close the window.

If you are running PartitionMagic from the rescue disks, you cannot modify pending operations from this window.

Applying Changes to Your System

As you complete tasks using the **Partition** menu (or the **Operations** menu if running from the rescue disks), the disk map and partition list reflect the changes you have made. However, no changes physically take place on your system until you apply them.

You can perform several operations and then apply all the changes at once.

To apply changes to your system, click **General > Apply Changes**, or click **Apply** in the action panel.

To discard the changes and start over, click **General > Discard All Changes**. With the exception of being able to undelete some partitions, you cannot discard or undo changes after you have applied them.

Applying Changes in Windows vs. Boot Mode

When you apply changes, PartitionMagic evaluates your system to see if changes are being made to partitions where there are open files (such as when you modify the C: drive while running Windows). If there are no open files, the changes will be applied while Windows is running. If there are open files, PartitionMagic must go into boot mode to apply the changes. When prompted, click **OK** to go into boot mode. You do not need to have DOS installed on your system to apply changes in boot mode.

Using BootMagic

This chapter includes the following information:

- Introduction
- BootMagic System Requirements
- Installing BootMagic
- Configuring BootMagic
- Disabling BootMagic

Introduction

BootMagic® is a powerful disk-management tool that helps you run multiple operating systems on a single PC. Each time you start or restart your computer, BootMagic presents a list of operating systems you can boot to. The configuration program lets you quickly select the operating systems you want to appear in the **BootMagic Menu** and lets you set various boot-time options such as a default OS and a startup delay.

With BootMagic, you can easily switch between operating systems, using whichever OS best suits your immediate needs. You can even try out a new OS risk-free, knowing that your old OS is there, readily accessible when you need it.

If you only occasionally change the active partition and do not want to use BootMagic, you can use PQBoot™ for Windows. PQBoot is a quick and easy way to switch between bootable primary partitions. You may also want to use PQBoot if you cannot use BootMagic easily because you only have NTFS partitions on your computer. For more information about PQBoot, see *Chapter 7* of the PDF Norton PartitionMagic user guide.

BootMagic System Requirements

Hardware/Software	Requirement
Processor	Pentium
RAM	32 MB for Windows 9x, Me; 128 MB for Windows NT 4.0, Windows 2000, or Windows XP
Hard drive free space	10 MB
CD-ROM drive	Any speed
3.5-inch diskette drive	3.5-inch diskette drive
Operating system	Windows 95, Windows 98, Windows Me, Windows NT 4.0, Windows 2000 Professional, Windows XP
Monitor	SVGA
Pointing device	Microsoft-compatible mouse

Installing BootMagic

- 1 Insert the Norton PartitionMagic CD in your CD drive.

2 Click **BootMagic** from the Norton PartitionMagic setup screen, then click **Install** to launch the BootMagic installation program.

3 Follow the on-screen instructions to install BootMagic.

IMPORTANT! BootMagic can be installed to any FAT or FAT32 partition (primary or logical). If your system only has NTFS partitions, see “Installing BootMagic on an NTFS System” in the Norton PartitionMagic user guide.

4 After installation is complete, click **Back > Exit** to close the setup screen.

After installation, BootMagic sorts through your system’s hard disks, looking at the partition tables and gathering information about each currently installed operating system. BootMagic then automatically runs the configuration program, adding every detected OS to the **BootMagic Menu**.

At this point, it may be necessary for you to edit the items that appear in the menu list. While BootMagic reliably detects most operating systems, it may also detect some non-OS partitions. For example, if you have a primary NTFS data partition (that is, a partition which contains only data, no OS) on the first disk, BootMagic may detect it as Windows NT. Likewise, a primary FAT or FAT32 data partition may be detected as MS-DOS or Windows 95/98. Because data partitions cannot be booted, you should remove them from the menu list. You can also choose to add or remove other OS selections, modify OS names and icons for easier identification, add passwords, set a new startup delay, or select a different default OS.

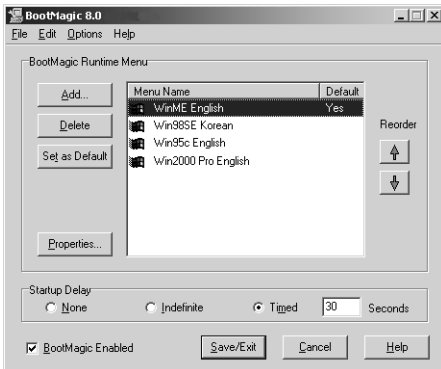
Configuring BootMagic

BootMagic's configuration program consists of two versions: one for DOS and one for Windows. Both versions have similar interfaces and offer the same functionality.

You can start the BootMagic configuration program in the following ways:

- In Windows, select **Start > Programs > BootMagic 8.0 > BootMagic Configuration**.
- In DOS, run `drive:\BTMAGIC.PQ\CONFIG.BAT`.
- On the PartitionMagic main screen, click **Tools > BootMagic Configuration**.
- You can run a DOS version of the BootMagic configuration program from the Norton PartitionMagic CD if your computer has the ability to boot from a CD.

When you run the configuration program, the BootMagic main window appears.



From this window, you can set a password for the configuration program, the BootMagic Menu, or specific menu items; add or remove an OS to the BootMagic Menu; modify an operating system's BootMagic properties; set your default operating system; set the startup delay; or disable BootMagic. Each of these options are briefly covered in this chapter. You can also change the background bitmap. For further information about configuring BootMagic, see the BootMagic online help.

Disabling BootMagic

Disabling BootMagic does not destroy any of your configuration settings. All of the current settings are saved until BootMagic is re-enabled.

- 1** Unmark the **BootMagic Enabled** check box in the BootMagic main window.

The configuration options become unavailable, and BootMagic remains disabled until the box is re-checked.

- 2** Click **Save/Exit** to save your changes and exit the configuration program.

Service and Support Solutions

The Service & Support Web site at <http://service.symantec.com> supports Symantec products. Customer Service helps with nontechnical issues such as orders, upgrades, replacements, and rebates. Technical Support helps with technical issues such as installing, configuring, or troubleshooting Symantec products.

Methods of technical support and customer service can vary by region. For information on support offerings in your region, check the appropriate Web site listed in the sections that follow.

If you received this product when you purchased your computer, your computer manufacturer may be responsible for providing your support.

Customer service

The Service & Support Web site at <http://service.symantec.com> tells you how to:

- Subscribe to Symantec newsletters.
- Locate resellers and consultants in your area.

- Update your product registration.
- Find out about orders, returns, or a rebate status.
- Access Customer Service FAQs.
- Post a question to a Customer Service representative.
- Obtain product information, literature, or trialware.

For upgrade orders, visit the Symantec Store at:

<http://www.symantecstore.com>

Technical support

Symantec offers two technical support options for help with installing, configuring, or troubleshooting Symantec products:

- Online Service and Support

Connect to the Symantec Service & Support Web site at <http://service.symantec.com>, select your user type, and then select your product and version. You can access hot topics, Knowledge Base articles, tutorials, contact options, and more. You can also post a question to an online Technical Support representative.

- PriorityCare telephone support

This fee-based (in most areas) telephone support is available to all registered customers. Find the phone number for your product at the Service & Support Web site. You'll be led through the online options first, and then to the telephone contact options.

Support for old and discontinued versions

When Symantec announces that a product will no longer be marketed or sold, telephone support is discontinued 60 days later. Technical information may still be available through the Service & Support Web site at: <http://service.symantec.com>

Subscription policy

If your Symantec product includes virus, firewall, or Web content protection, you may be entitled to receive updates via LiveUpdate. Subscription length varies by Symantec product.

After your initial subscription ends, you must renew it before you can update your virus, firewall, or Web content protection. Without these updates, you will be vulnerable to attacks.

When you run LiveUpdate near the end of your subscription period, you are prompted to subscribe for a nominal charge. Simply follow the instructions on the screen.

Worldwide service and support

Technical support and customer service solutions vary by country. For Symantec and International Partner locations outside of the United States, contact one of the service and support offices listed below, or connect to <http://service.symantec.com> and select your region under Global Service and Support.

Service and support offices

North America

Symantec Corporation www.symantec.com/
555 International Way
Springfield, OR 97477
U.S.A.

Australia and New Zealand

Symantec Australia http://www.symantec.com/region/reg_ap/
Level 2, 1 Julius Avenue +61 (2) 8879-1000
North Ryde, NSW 2113 Fax: +61 (2) 8879-1001
Sydney
Australia

Europe, Middle East, and Africa

Symantec Authorized http://www.symantec.com/region/reg_eu/
Service Center +353 (1) 811 8032
Postbus 1029
3600 BA Maarssen
The Netherlands

Latin America

Symantec Brasil Portuguese:
Market Place Tower <http://www.service.symantec.com/br>
Av. Dr. Chucuri Zaidan, 920 Spanish:
12° andar <http://www.service.symantec.com/mx>
São Paulo - SP Brazil: +55 (11) 5189-6300
CEP: 04583-904 Mexico: +52 55 5322 3681 (Mexico DF)
Brasil, SA 01 800 711 8443 (Interior)
Argentina: +54 (11) 5382-3800

Index

Numerics

1394 drive support *11*

A

applying changes *14*

Windows vs. boot mode *14*

asterisk (*) in partition list, explained *9*

B

boot mode *14*

booting from the PartitionMagic CD *5*

BootMagic

configuring *18*

disabling *19*

installing *16*

system requirements *16*

C

cancelling changes *14*

changes, applying *14*

completing tasks, general process for
10

configuring BootMagic *18*

D

data partition *17*

deleting all partitions *11*

details, viewing *13*

disabling BootMagic *19*

discarding changes *14*

disk, selecting *11*

disks, dynamic *12*

DOS mode, applying changes in *14*

dynamic disks *5, 12*

F

FireWire support *11*

free space required to install
BootMagic *16*

H

hard disk

geometry *1*

selecting *11*

hardware requirements *See* system
requirements

I

installing

BootMagic *16*

PartitionMagic *4*

interface, overview of *7*

J

Jaz drives *12*

M

main window

overview *7*

rescue disk *9*

status bar *10*

O

operations

performing from the rescue disks *9*

process overview *10*

selecting *12*

undoing *13*

viewing pending *13*

P

- partition list 9
 - asterisk (*) in, explained 9
 - status in 9
- partition map 8
- Partition menu 9
- PartitionMagic system requirements 2
- PartitionMagic, running 6
- partitions
 - applying changes to 14
 - data 17
 - deleting all 11
 - map in main window 8
 - selecting 11
 - status 9
- pending changes 14
- pending operations, viewing 13
- physical disk, selecting 11
- PQBoot for Windows 16
- prerequisites 5
- process overview 10

R

- removable media 12
- requirements, system 2
- rescue disks
 - creating 5
 - system requirements 2

S

- selecting
 - operations 12
 - partitions 11
 - physical disks 11
- status bar 10
- support, technical 21
- system requirements
 - BootMagic 16

PartitionMagic 2

T

- technical support 21

U

- undo 13
- USB/USB2 support 11
- utilities 5

V

- View menu 8

W

- wizards 12
 - overview 9
 - see* PartitionMagic PDF user guide

Z

- Zip disks 12