

Samsung Memory Card/UFD Authentication Utility

User's Manual

Revision 1.1

LEGAL DISCLAIMER

SAMSUNG ELECTRONICS RESERVES THE RIGHT TO CHANGE PRODUCTS, INFORMATION AND SPECIFICATIONS WITHOUT NOTICE.

Products and specifications discussed herein are for reference purposes only. All information discussed herein may change without notice and is provided on an "AS IS" basis, without warranties of any kind. This document and all information discussed herein remain the sole and exclusive property of Samsung Electronics. No license of any patent, copyright, mask work, trademark or any other intellectual property right is granted by one party to the other party under this document, by implication, estoppels or otherwise. Samsung products are not intended for use in life support, critical care, medical, safety equipment, or similar applications where product failure could result in loss of life or personal or physical harm, or any military or defense application, or any governmental procurement to which special terms or provisions may apply. For updates or additional information about Samsung products, contact your nearest Samsung office. All brand names, trademarks and registered trademarks belong to their respective owners.

Copyright, 2018 Samsung Electronics Co., Ltd. All rights reserved.

COPYRIGHT © 2018

This material is copyrighted by Samsung Electronics. Any unauthorized reproductions, use or disclosure of this material, or any part thereof, is strictly prohibited and is a violation under copyright law.

TRADEMARKS & SERVICE MARKS

The Samsung Logo is the trademark of Samsung Electronics. Adobe is a trademark and Adobe Acrobat is a registered trademark of Adobe Systems Incorporated. All other company and product names may be trademarks of the respective companies with which they are associated.

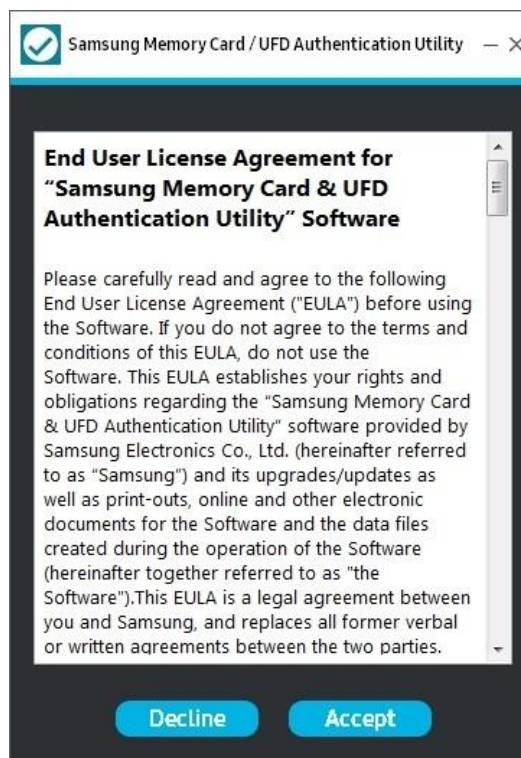
Introduction

Samsung Memory Card/UFD Authentication Utility

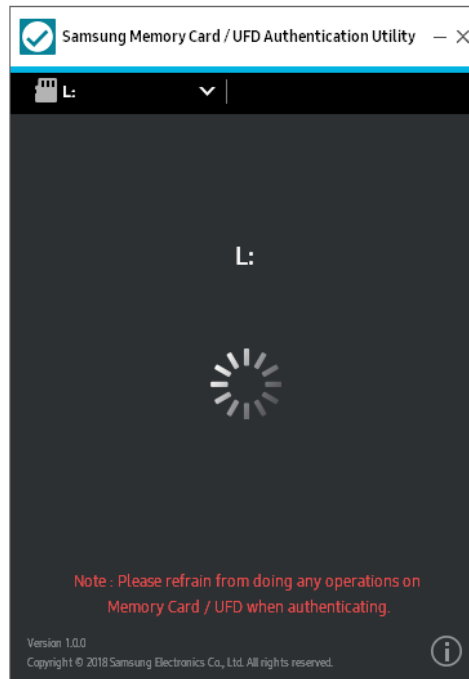
Samsung Authentication Utility can distinguish official Samsung Products from others. It can support both Samsung Memory Card and UFD. In case of Memory Card, this utility only supports the product with the V mark (☑). In case of UFD products (Bar Plus), V mark with 'Authentication Available' wording is on the package of the products. Only such products can be authenticated by the Utility.

User Guide

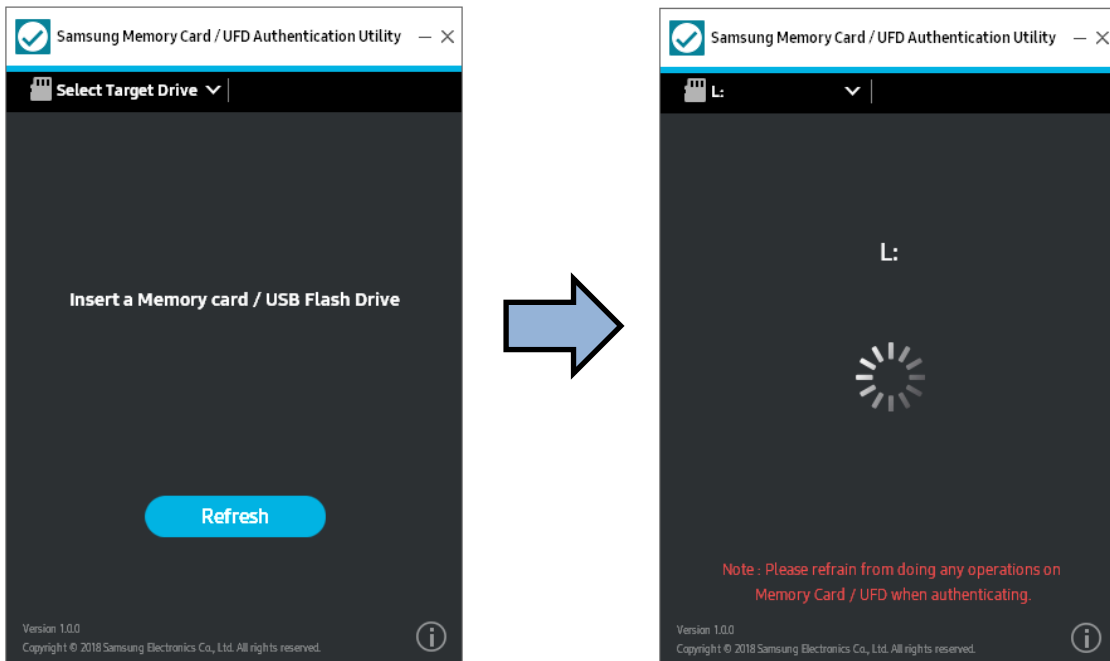
1. The Utility supports Korean, English, and Chinese languages. English is the default language chosen. Utility prompts the "End User License Agreement" (EULA) only once at the first time of launch. In order to proceed further, user needs to agree. Once agreed, EULA will not be prompted again.



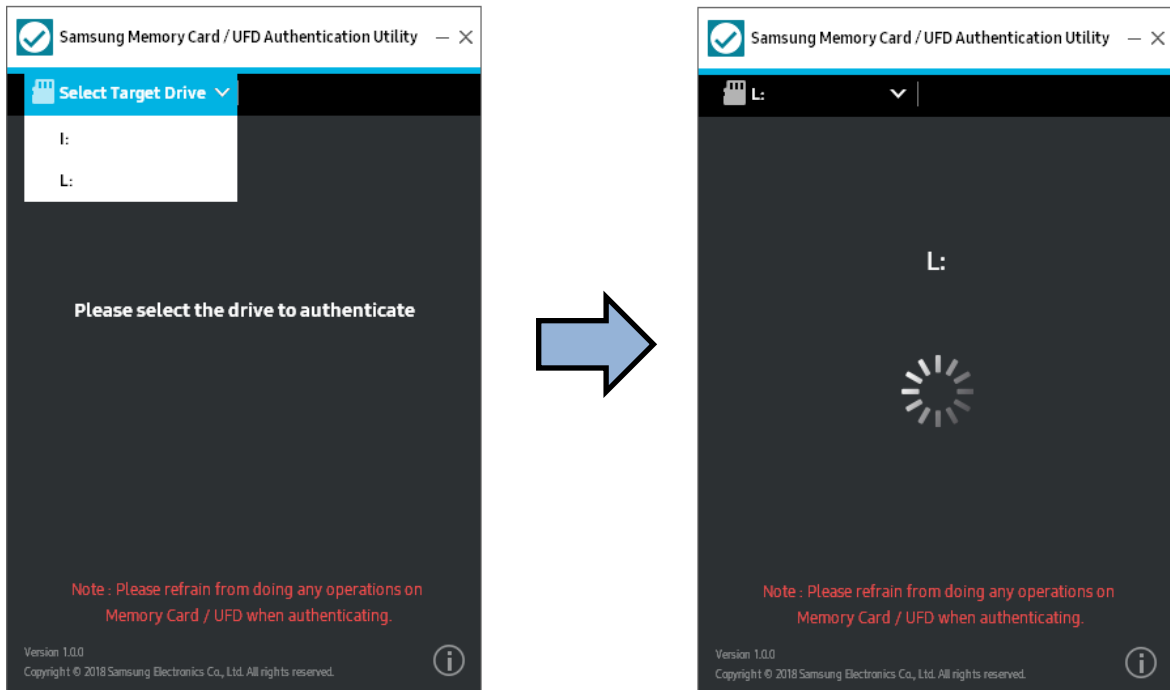
2. After the Utility is downloaded and EULA is accepted, the software automatically recognizes the Memory Card/UFD connected to PC. Automatic authentication occurs when only one Memory Card/UFD is connected to PC.



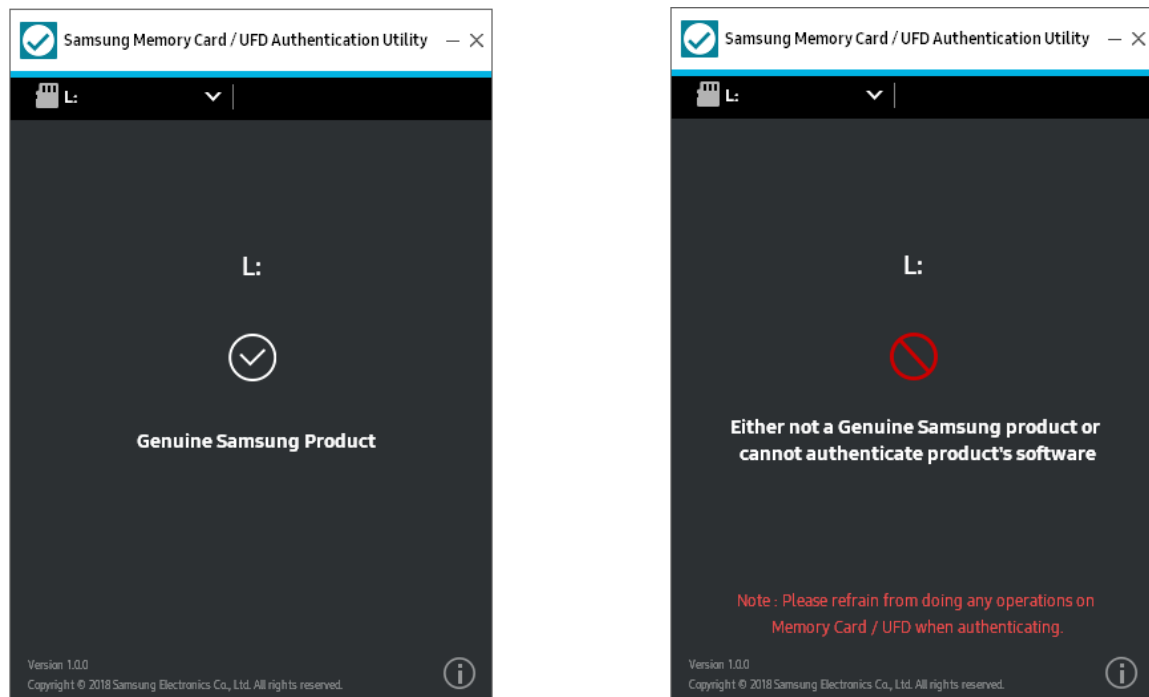
3. If there is no Memory Card/UFD connected to PC, Utility shows “Insert a Memory card / USB Flash Drive” message. Then, if user inserts a Memory Card/UFD, Utility automatically recognizes and authenticates it.



- 4. If more than two Memory Card/UFDs are connected to PC, user should select the target drive to authenticate. When user selects the target drive, Utility runs authentication and shows the result of whether or not the product is a genuine Samsung Card/UFD product.



- 5. Generally Utility reports authentication results in 5 seconds.



System Requirements

Component	Requirements
Operating System	<p>Windows 7 (32/64bit)</p> <p>Windows 8 & 8.1 (32/64bit)</p> <p>Windows10 (32/64bit)</p>
Supported Languages	Korean, English, Chinese (Simplified)
Micro SD Card	<p>Samsung PRO Endurance Card</p> <p>Samsung EVO Select Card</p> <p>More products will be available soon.</p>
UFD	<p>Samsung Flash Drive Bar Plus</p> <p>Samsung Flash Drive Fit Plus</p> <p>More products will be available soon.</p>

Caution

1. In case of Memory Card, only the V-marked (☑) products can be authenticated



2. If Utility does not render accurate results, remove and reconnect the target device from the PC before retrying. Utility may not render accurate results in instances including but not limited to the following:
 - A. Operating the Memory Card / UFD while authentication is in process;
 - B. Running Utility on micro SD card on USB dongle; or
 - C. Running Utility on micro SD card on Android mobile device connected through USB cable to Windows.
3. Maximum number of cards the utility can detect is 8.
4. If bit locker is enabled on the micro SD card / UFD, then Utility will not be able to authenticate.
5. The utility will not be able to detect unformatted micro SD card / UFD.
6. Please check whether the Utility version is the latest on the website: www.samsung.com/support

July 2018

Design and contents of this manual are subject to change without notice.

©2018 Samsung Electronics, Co., Ltd. All rights reserved.

End of Document