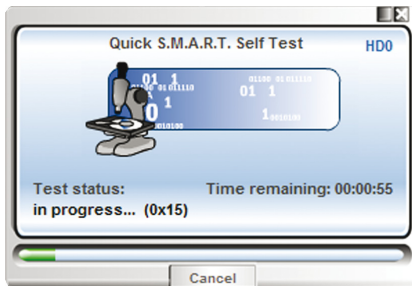


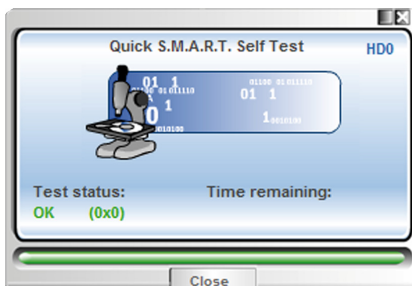


Hard Disk Monitor Warns of Worst Case Scenario!

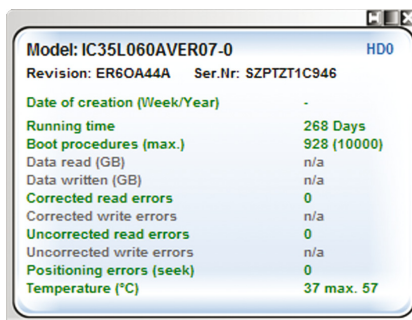
No other single part of the modern computer system is more susceptible to malfunction than the hard disk. In fact, such a malfunction can be unavoidable. With Windows-based O&O DriveLED 2, however, you now have the ability to recognize a potential malfunction before it happens. You can then backup your data and, through the exchange of the affected hard disk, potentially avoid a fatal loss of data.



Quick S.M.A.R.T. Self Test



Quick S.M.A.R.T. Self Test completed



S.M.A.R.T. Self Test details

The lifespan of every hard disk is limited

Because hard disk drives contain parts designed to operate with precision to the nearest micro inch or at speeds topping many thousands of revolutions per minute, the possibility of a malfunction rises with the age of the hard disk. However, with O&O DriveLED 2 you now have a reliable partner that accurately tells you when it is time to backup your important data with O&O DiskImage, or even to replace the hard disk.

S.M.A.R.T. hardware monitoring

Quietly running in the background, the new O&O DriveLED 2 permanently monitors the status of your hard disks. With the help of S.M.A.R.T. (Self Monitoring, Analysis, and Reporting Technology), O&O DriveLED 2 analyses the health state of your hard disks and warns you in the event of potential malfunctions.

Immediately after installation O&O DriveLED 2 provides you with the ability to make an intensive analysis of all of your hard disks. Every hard disk that supports S.M.A.R.T. is able to run self tests. Using O&O DriveLED 2 you can start a self-test of your hard disk with only one click of your mouse. During the tests several parameters and functions are systematically checked, including the interface, the surface and the mechanics, including every read head. In addition, the error log will be analyzed and the S.M.A.R.T. system itself will be tested.

If there were no failures found, the corresponding indicator will be lit up green. If some failures occurred, O&O DriveLED 2 will notify you. In this case, it is recommended to backup your data.

Monitoring Access on the Desktop

While O&O DriveLED 2 makes it possible for you to see your hard drive's built-in LEDs on your computer screen, this is just the beginning. In addition, you now have the possibility of monitoring all of your virtual drives, such as network drives, being able to clearly distinguish between read-access and write-access.

Product features

- Tracking and display of read/write access for logical volumes
- Tracking and display of current storage capacity for logical volumes
- Automatic monitoring of all S.M.A.R.T. properties
- Tracking and display of current temperatures for all hard disk drives (up to manufacture supported limits)
- Prognosis of remaining operational life for all hard disk drives
- Self tests run directly in Windows without the creation of a boot disk!
- Warning notification of possible operational errors on all hard disk drives
- Support of all Windows-compatible data volumes
- Support of SCSI-disk drives

System Requirements

- System with Intel® Pentium® or comparable Processor
- 64 MB RAM
- 10 MB free hard disk space
- CD-ROM-Drive
- VGA-Graphic Card with minimum 800x600 with 256 colors
- Keyboard and Mouse
- Windows 2000, Windows Server 2003, Windows XP

O&O Software GmbH
Am Borsigturm 48
13507 Berlin
Germany

Tel +49 (0)30 4303 4303
Fax +49 (0)30 4303 4399

E-mail info@oo-software.com
Web www.oo-software.com