

# *SecureTraveler<sup>TM</sup> User's Manual*

*SecureTraveler<sup>TM</sup> is the DataTraveler<sup>®</sup> configuration utility that allows corporate and home users to set up public and password-protected privacy zones on compatible DataTraveler USB Flash Drives. It also allows users to set Windows shortcuts to launch the program conveniently.*

*This document is designed to get you started with SecureTraveler and includes important frequently asked questions (FAQs). For the latest FAQs, please visit the DataTraveler<sup>®</sup> website at [www.kingston.com/support/USBFLASHDRIVES](http://www.kingston.com/support/USBFLASHDRIVES) .*

## TABLE OF CONTENTS

<b>1</b>	<b>System .....</b>	<b>3</b>
1.1	Requirements.....	3
1.2	Recommendations .....	3
<b>2</b>	<b>Public And Privacy Zones .....</b>	<b>3</b>
<b>3</b>	<b>Connecting The DataTraveler® .....</b>	<b>5</b>
<b>4</b>	<b>Configuring The DataTraveler® With SecureTraveler™ .....</b>	<b>6</b>
4.1	Creating the Privacy Zone.....	6
4.2	Accessing Your Privacy Zone .....	11
4.3	Customizing SecureTraveler™ Settings.....	14
<b>5</b>	<b>Frequently Asked Questions .....</b>	<b>19</b>

## 1 SYSTEM

### 1.1 Requirements

- Pentium II 266 MHz Processor
- 2MB hard drive free space
- Operating Systems: Windows Vista™ (32-bit only)\*, Windows XP® SP1 and SP2, Windows 2000® SP4
- Administrative privileges for Windows XP and 2000.
- USB Port 2.0/1.1

\* Windows ReadyBoost not supported.

### 1.2 Recommendations

- Graphic accelerator that supports 24-bit color depth for best-quality graphics

## 2 PUBLIC AND PRIVACY ZONES

The DataTraveler® can be set up for a public zone only, or a public and privacy zone. A public “zone” refers to the area on the DataTraveler® that is not protected. By default, Kingston sets up the entire DataTraveler as a public zone at the factory. Files in the public zone can be seen and read on USB-ready computers; there is no data security in the public zone.

DataTraveler listed as 1GB of capacity<sup>1</sup> will be set up as a single zone by default (Figure 1):

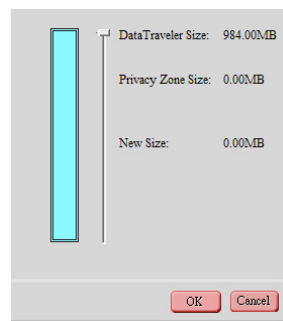
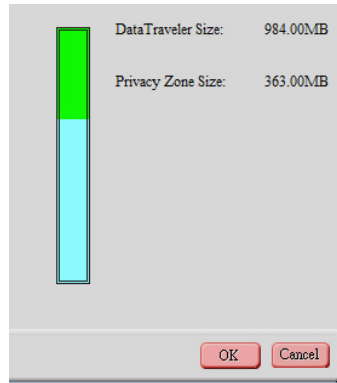


Figure 1: Single Zone

<sup>1</sup> Please note: Some of the listed capacity is used for formatting and other functions and thus is not available for data storage. For more information, please consult Kingston's Digital media Guide at [Kingston.com/Digital\\_Media\\_Guide](http://Kingston.com/Digital_Media_Guide).

If the SecureTraveler™ is used to format and create a privacy zone, then a 1GB DataTraveler could be divided as follows (Figure 2):



*Figure 2: Divided Zone*

In the previous example (Figure 2), the total available data storage area is broken up as:

- Privacy partition of 363 MB

- Public partition for the remainder, or  $984 \text{ MB} - 363 \text{ MB} = 621 \text{ MB}$ .

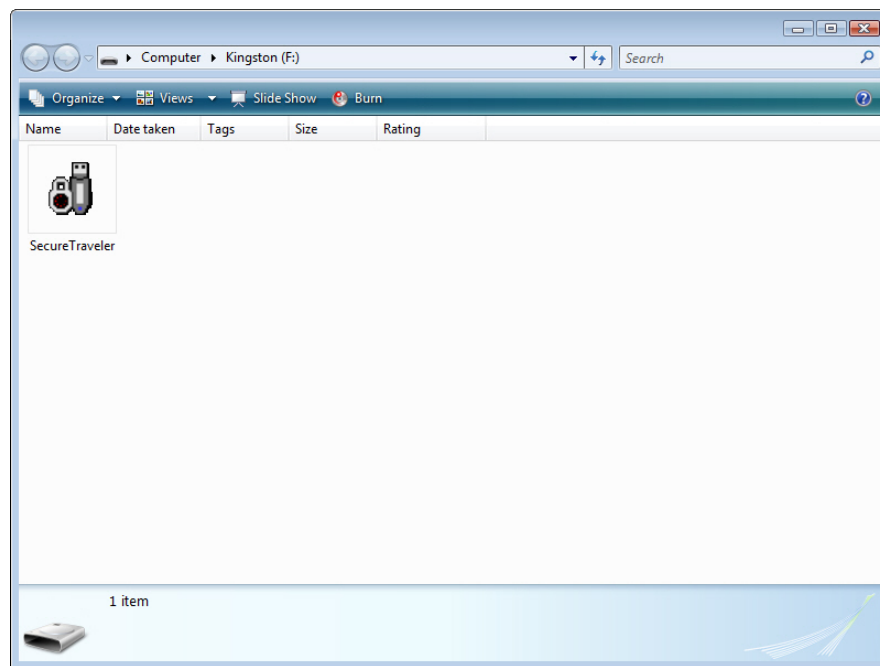
Files in the privacy zone cannot be accessed without entering a password set up by the person who set up the privacy zone. Privacy zones thus offer data security for private data. Without a password, there is no way to even view the file names stored in the privacy zone, let alone the files themselves.

This User Guide will explain how to set up public and private partitions for increased data security, as well as setting up Windows shortcuts to allow for faster and easier access to the SecureTraveler program.

### 3 CONNECTING THE DATATRAVELER®

Insert your DataTraveler USB Flash drive into the USB port. The Operating Systems will automatically recognize the DataTraveler and install the required drivers.

Generally, Windows will display the contents of the public zone of the DataTraveler (Figure 3).



*Figure 3: DataTraveler Public Zone Contents*

If you do not need a privacy zone for data security, you can use the DataTraveler without running SecureTraveler™.

For computers running supported Microsoft Windows: If you'd like to set up a privacy zone, double-click on the **SecureTraveler™** executable program (Figure 3). Section 4 will describe the use of the SecureTraveler program.

**Note: SecureTraveler software is not supported on Macintosh systems.**

## 4 CONFIGURING THE DATATRAVELER<sup>®</sup> WITH SECURETRAVELER<sup>™</sup>

**CAUTION!** When you create or update a privacy zone, the DataTraveler<sup>®</sup> is formatted and ALL data stored on the drive will be lost. Backup your files before you create or change your privacy zone. SecureTraveler will save the SecureTraveler.exe file; however, you will need to save the User Guide to your hard drive prior to any format changes.

### 4.1 Creating the Privacy Zone

When the SecureTraveler<sup>™</sup> program is executed, a Language Selector screen will appear (Figure 4):

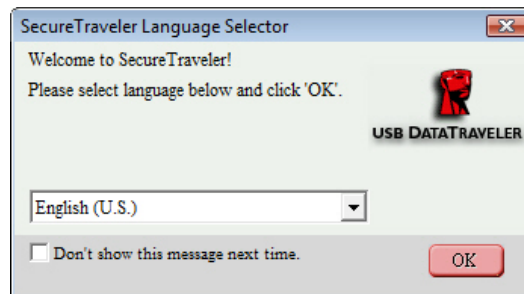


Figure 4: SecureTraveler Language Selector

If English is OK for the program language, click the **OK** button to continue. To prevent this screen from showing up every time you run the DataTraveler<sup>®</sup>, please check the box next to the **Don't show this message next time**; note that you can still change this option and the language on the Formatting screen.

To change the language, click on the language display to show all available languages and highlight the desired language before clicking the **OK** button (Figure 5). You can also check **Don't show this message next time** if desired.

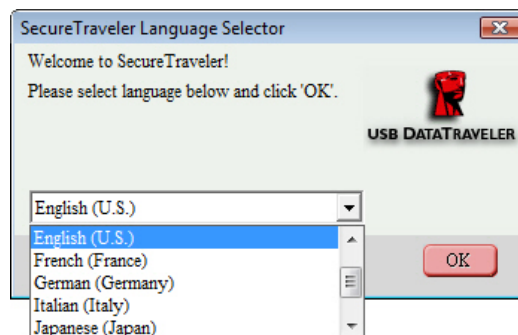


Figure 5: SecureTraveler Languages List

Next, the Welcome Screen is displayed, explaining that there is no privacy zone defined (Figure 6):

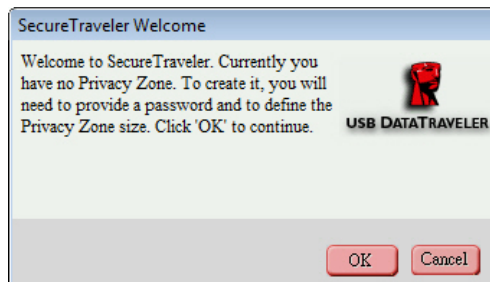


Figure 6: SecureTraveler Welcome Screen

Click **Cancel** to exit SecureTraveler or **OK** to continue to the Format screen (Figure 7).

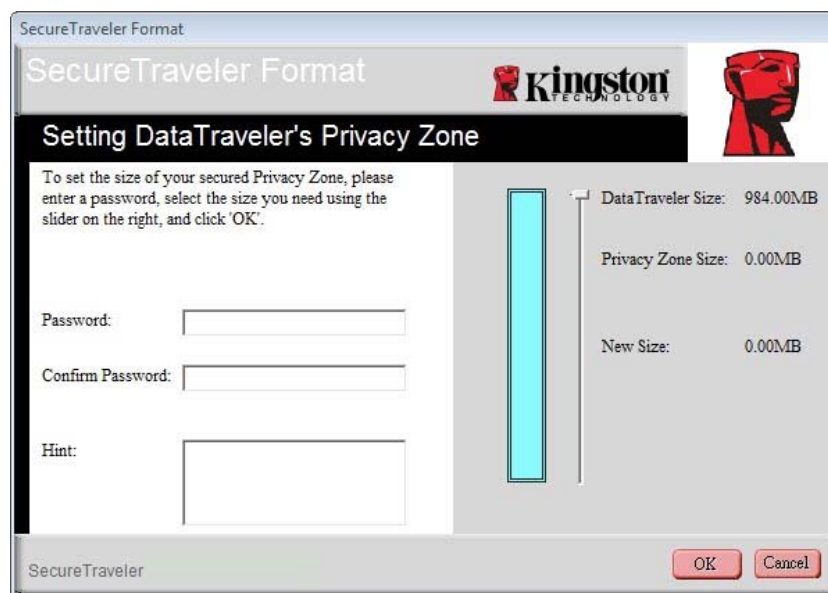


Figure 7: SecureTraveler Format Screen

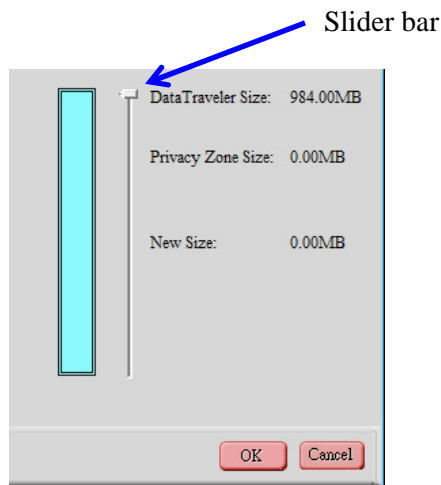
The Format screen allows you to define the size of the privacy zone and password used to access it.

To set the password, which is required for the privacy zone, enter it in the **Password** and **Confirm Password** fields; both passwords keyed in must match exactly for SecureTraveler to accept the password. This password can be changed later in the Settings screen.

The **Hint** field, which is optional to fill in, is there to help you remember a password should you forget it.

**CAUTION! If you forget your privacy zone password, you will no longer be able to access files stored in the privacy zone; you will be required to reformat and reinitialize the privacy zone to regain the original space, thereby losing all the files stored there. This is done to protect the data – you cannot access it without the password defined by the creator of the privacy zone.**

Next, click on the **slider bar** with your mouse (Figure 8), and while holding down the left mouse key, drag the pointer to correspond to the desired split between public and privacy zones. The privacy zone can only be set up to 90% of the capacity of the flash drive shown on the screen. The selected area for the privacy zone will be highlighted in green on the DataTraveler graphic.



*Figure 8: SecureTraveler Formatting Slider Bar*

After selecting the privacy zone size, click **OK** to continue. If you do not wish to make any changes, click **Cancel** to exit this screen.



In the example, a 1 GB DataTraveler is set up to have about 500MB allocated for privacy zone (Figure 9).

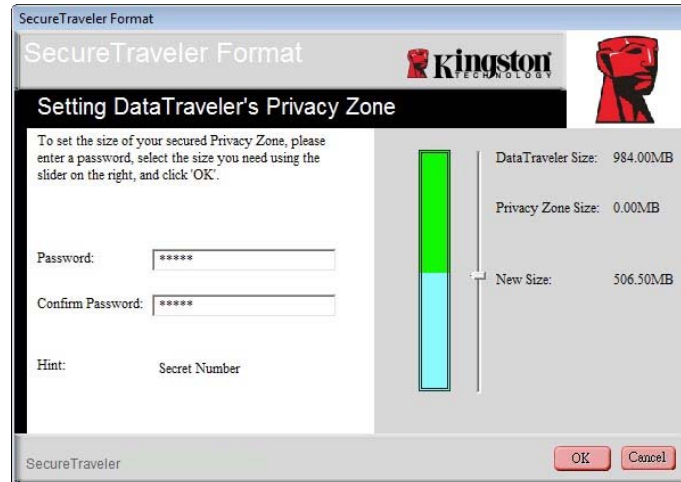


Figure 9: Format Screen with Privacy Zone

Due to different DataTraveler capacities, SecureTraveler may make slight adjustments to the user-selected privacy zone size to optimize the internal storage division; so, if you select 501.50 MB for the privacy zone, SecureTraveler will increase it to 506.50 MB for best fit with a 1GB DataTraveler drive.

When ready, click **OK** to proceed with the format, or click **Cancel** to exit this screen without making any changes.

If there are no errors, SecureTraveler will ask for confirmation before proceeding with the actual format (Figure 10).

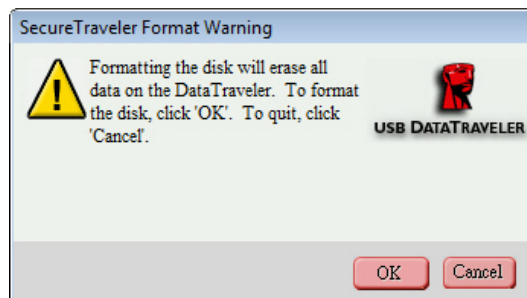


Figure 10: Format Warning Screen

Click **Cancel** to cancel the Formatting, or **OK** to continue with the format.

SecureTraveler will then initiate the format to create the privacy partition, and display a format status window (Figure 11).

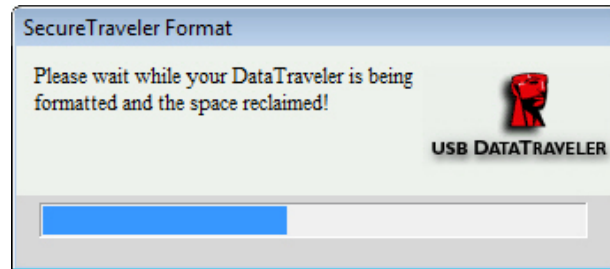


Figure 11: Format Status Window

When the formatting has completed successfully, you will see a Format Completed screen (Figure 12):

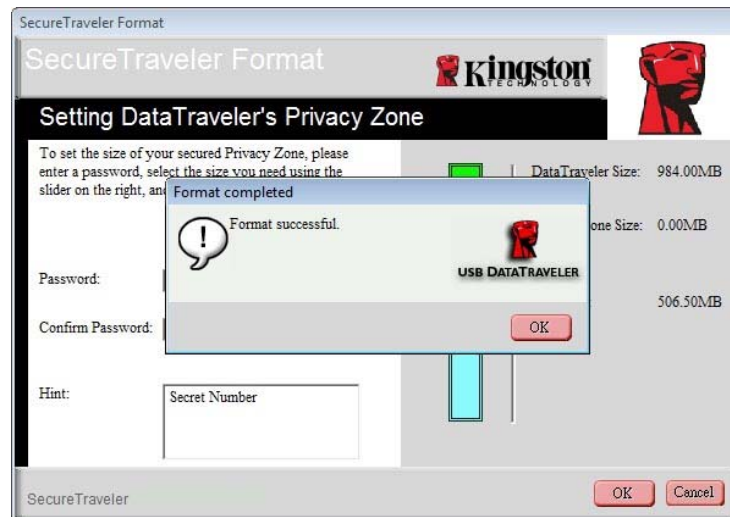


Figure 12: Format Completed Window

Click **OK** to continue. At this point, the privacy zone formatting process is completed and you are shown the Login screen to get into the privacy partition. Click **Cancel** to exit the program, or enter the Password you just defined to access the privacy zone. Accessing the privacy Zone is explained in the next section.

## 4.2 Accessing Your Privacy Zone

When you insert the DataTraveler<sup>®</sup> into a compatible computer, it will be detected and a window will display with the contents of the public zone as shown in Section 3 (Figure 3).

To access the privacy zone, do one of the following:

- A. Double-click on the **SecureTraveler** executable file name shown for the DataTraveler in Section 3 (Figure 3).
- B. Click once on the task bar “Quick Launch” shortcut for SecureTraveler<sup>™</sup> or double-click on the workspace shortcut (if set up in the Format screen; see Section 4.3 for details on these shortcuts, Figures 19 and 20).

If a privacy zone does not exist, the screen flow will start as shown in Section 4.1 as SecureTraveler will assume that you are trying to define a privacy zone.

If a privacy zone exists, you will be asked to login using the password you defined in Section 4.1 (Figure 13):

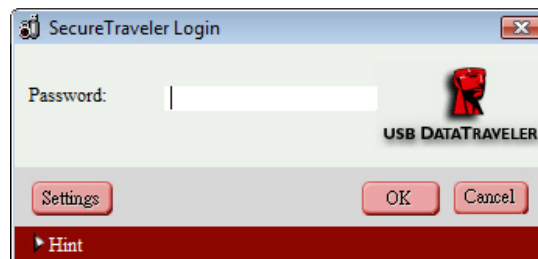


Figure 13: SecureTraveler Login

**Note: You can only access one zone at a time. Prior to logging into your privacy zone, you will only be able to access the public zone. After you log into your privacy zone, you will be able to access it but not the public zone. To re-access the public zone, you will need to log out of your privacy zone first.**

Enter your password and click **OK** to continue, or **Cancel** to exit SecureTraveler. If you enter your password incorrectly, you will get an error message. SecureTraveler allows up to 5 password verification attempts. If the privacy zone becomes blocked for further access, follow the directions provided in the dialog boxes to access your privacy zone.

If you forgot your password, click on the Hint reminder at the bottom; this will display your predefined hint (Figure 14).

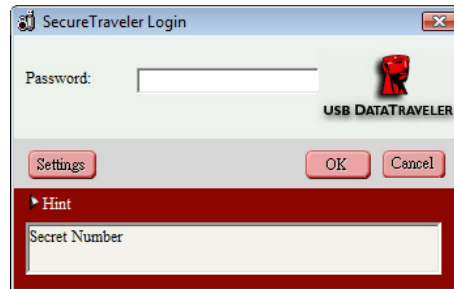


Figure 14: Privacy Zone Login Screen, Displaying Hint

**Note: If you do not know or remember your password, the only option will be to reformat the DataTraveler and create a new privacy zone. Warning, all data stored in the previous privacy zone will be lost. See section 4.3 on formatting the DataTraveler drive.**

When you enter the correct password, after a short time a successful login message is displayed (Figure 15).

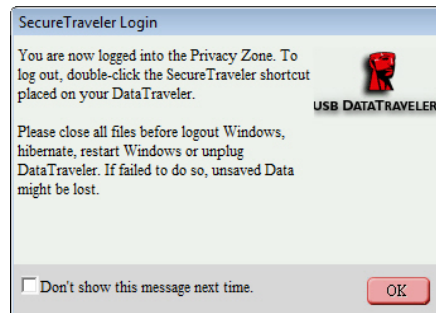
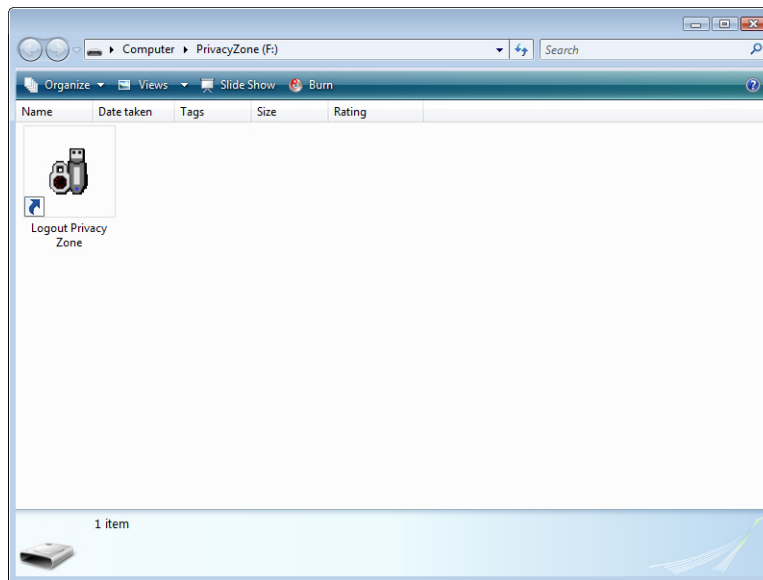


Figure 15: Successful Login Screen

You have the option of not showing the Successful Login Screen. You can check the **Don't show this message next time** box. This option can also be set/reset on the Settings screen.

After successful login, Windows will open a new screen and display the contents of your privacy zone (Figure 16).

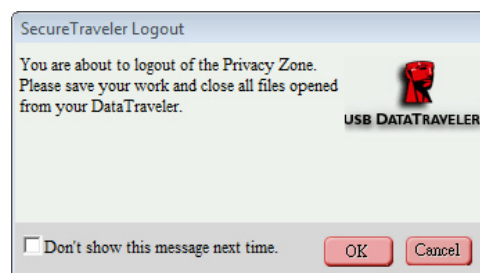
**Note: privacy zone is empty right after it is created.**



*Figure 16: Windows Privacy Zone Screen*

Note that you will need to double-click on the **Logout Privacy Zone** to end access to the privacy zone, or on the desktop shortcut to log out if set up in the Settings screen. You need to log out to access the public zone if needed or to end your session and disconnect your DataTraveler.

When you are done, double-click on **Logout Privacy Zone**. After a short time, you will see the Logout Verification screen (Figure 17).



*Figure 17: Logout Verification Screen*

To prevent file damage or loss, please close all application programs accessing the DataTraveler and then click **OK** to close the privacy zone. Do not disconnect your DataTraveler drive. Note that this screen can also be checked off so that it does not show up during logouts (the **Don't Show** option can be set or reset on the Settings screen).

After a short time, Windows will display the public partition (in this case, only containing the SecureTraveler software) as shown in section 3 (Figure 3). At this time, you can access the public zone or end your session and disconnect your DataTraveler.

To end your session and disconnect your DataTraveler, you will need to close the public partition Window. Use the Unplug or Eject Hardware utility to safely remove the drive. This utility is located in the System Tray next to the time/date. Click on the utility icon and then click on Safely Remove Storage Device. Wait for notification that it is safe to remove your drive.

### 4.3 Customizing SecureTraveler™ Settings

When you run the SecureTraveler program, you can click on the Settings button (Figure 18) to see the main Settings screen (Figure 19).

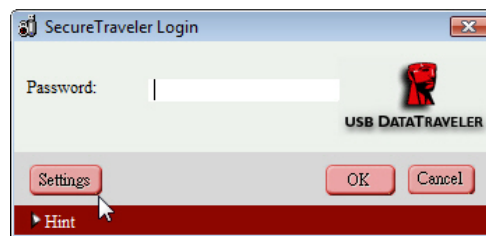


Figure 18: Settings Button

On the left side of the screen, you can check the boxes to set Windows options (Figure 19):

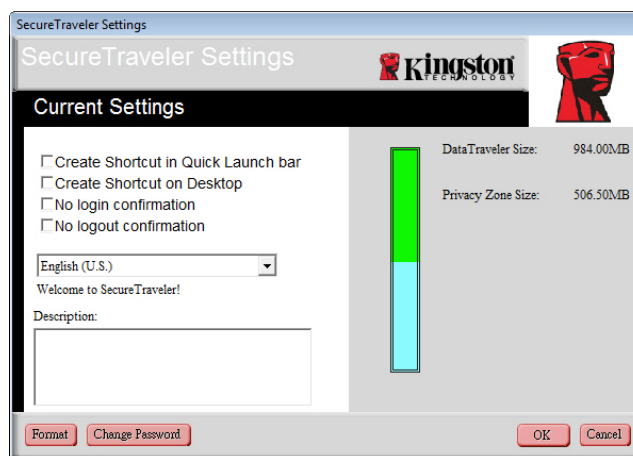
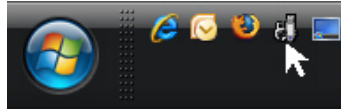


Figure 19: Settings Screen

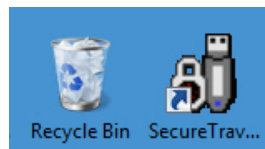
- **Create Shortcut in Quick Launch bar:** Checking this box sets up an icon for SecureTraveler in your Windows Quick Launch bar (Figure 20).



*Figure 20: Quick Launch Shortcut*

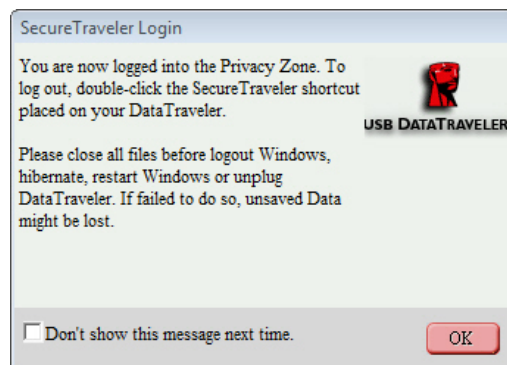
You can launch SecureTraveler by clicking once on this icon.

- **Create Shortcut on Desktop:** A SecureTraveler™ icon will be added to your desktop (Figure 21).



*Figure 21: SecureTraveler Shortcut on Windows Desktop*

- **No Login Confirmation:** If **No Login Confirmation** is checked, you will not see this screen upon login (Figure 22):



*Figure 22: Login Confirmation Screen*

- **No Logout Confirmation:** If **No Logout Confirmation** is checked, you will not see this screen upon logout (Figure 23):

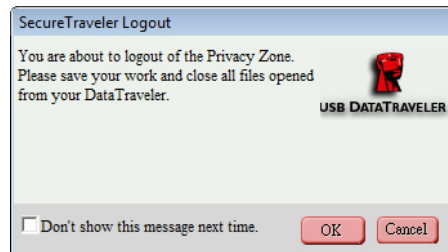


Figure 23: Logout Confirmation Screen

- **SecureTraveler Language:** By clicking on the Language field, you can select the language used for the SecureTraveler™ program (Figure 24).

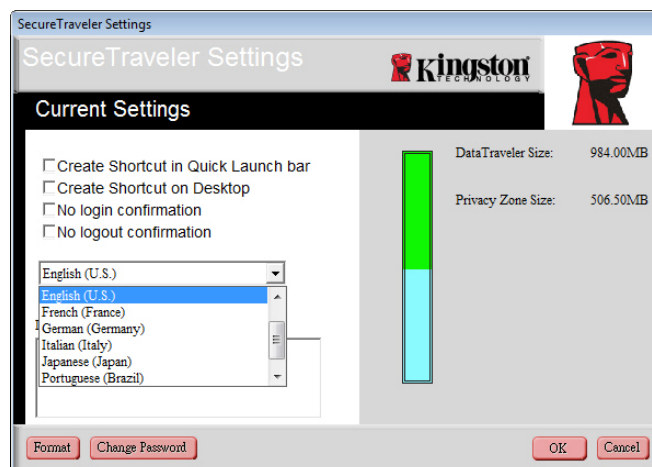


Figure 24: Language Selection Drop-down Menu

You can move the mouse over the different check boxes or the Language selection field, and the Description field will show help information, explaining what the check boxes do. On the right, the DataTraveler® graphic is shown, with the total size, and the size of the privacy zone as previously defined for a 1GB DataTraveler.

Click **OK** to make changes, or click **Cancel** to return to the Login screen without making any changes.



You can change the format of the DataTraveler by clicking on the **Format** button. You will then be presented with the Format screen (Figure 25).

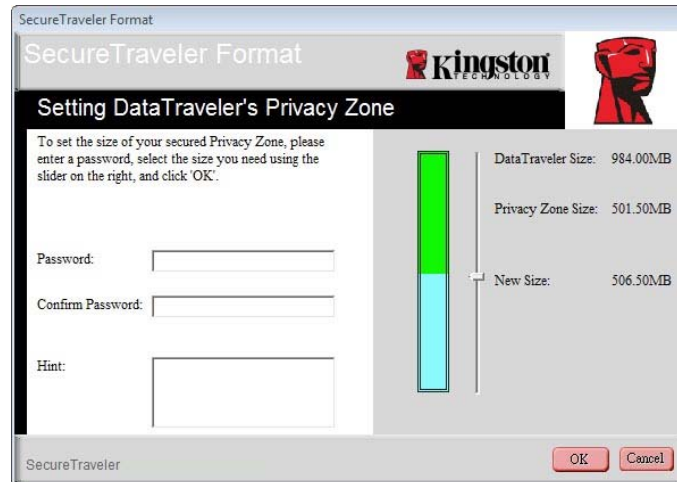


Figure 25: Format Screen

**CAUTION! Changing the size of your Privacy Zone requires formatting your DataTraveler, causing ALL secured and non-secured data to be lost.**

Please see Section 4.1 for details on changing your public and privacy zones. Click on **Change Password** if you want to change the password to access the privacy zone. The Change Password screen will appear (Figure 26). Frequent password changes are recommended for improved security.

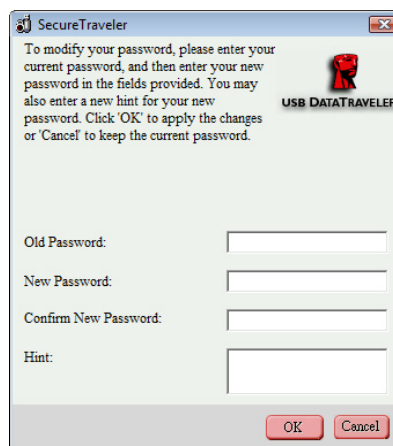


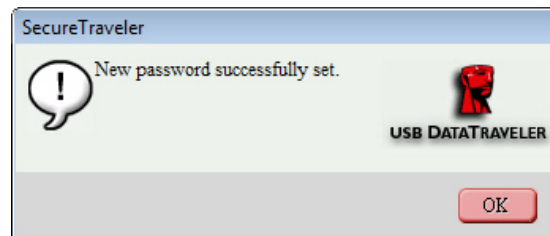
Figure 26: Password Change Screen

First, key in the **Old Password** (which is required to change to a New Password). If you don't remember or know the password, the privacy zone cannot be accessed and requires a new Format to set up a new privacy zone.

**Note: Formatting will delete all files stored in a previously defined privacy zone.**

After entering the **Old Password**, followed by the **New Password** and then **Confirm New Password**, you can enter a new **Hint** as a password reminder.

When ready, click **OK** to continue with the Password change or click **Cancel** to return to the Settings screen. If the password is changed successfully, you will see the following screen (Figure 27):



*Figure 27: Password Change Confirmation*

You can now exit SecureTraveler and use the DataTraveler to carry your information, with the assurance that the privacy zone will help protect it from unauthorized access.

## 5

## FREQUENTLY ASKED QUESTIONS

For a complete list of the latest FAQs, go to the DataTraveler website at [www.kingston.com/support/USBFLASHDRIVES](http://www.kingston.com/support/USBFLASHDRIVES). Several FAQs are listed below for your convenience.

**Q: I would like to secure all the data on my DataTraveler. Why am I limited to a Maximum Privacy Zone of 90%?**

**A:** Your DataTraveler needs space to run SecureTraveler, as well as information about your DataTraveler. 10% of your DataTraveler is kept free to save space for upgrades and future applications without hindering SecureTraveler operation.

**Q: How do I switch between the Public Zone and my Privacy Zone?**

**A:** Launch SecureTraveler from your desktop, DataTraveler or quick launch bar. If you see a prompt asking for your password, this means that you are currently in the Public Zone. To switch to your Privacy Zone, enter your password and click OK. If you see a pop-up window with a prompt asking you for logout confirmation from your Privacy Zone, this means that you're working in your Privacy Zone. To switch, click OK. To remain logged into your Privacy Zone, click Cancel.

**Q: I accidentally deleted SecureTraveler™ from my DataTraveler. How can I access data in my Privacy Zone?**

**A:** Download a new copy of SecureTraveler from the web at [www.kingston.com/support/USBFLASHDRIVES](http://www.kingston.com/support/USBFLASHDRIVES) to your DataTraveler. The Privacy Zone that you previously designated will be accessible.

**Q: Why can't I see the public partition after logging into the privacy partition?**

**A:** You can't access or see both partitions at the same time. You need to log out of the privacy partition to see the public partition, just like you need to log in to see the privacy partition.

**Q: Can I disconnect my DataTraveler without logging out of the privacy partition?**

**A:** Yes, you can disconnect the DataTraveler without logging out of the privacy zone. However, to protect your data, Kingston recommends that you log out of the privacy zone prior to disconnecting the DataTraveler.

**Q: Why can I use SecureTraveler only on certain Windows 2000 or Windows XP computers?**

**A:** You can only use SecureTraveler on computers with administrative privileges.

**Q: How do I delete the privacy zone?**

**A:** To delete the privacy zone, you must reformat the DataTraveler via the SecureTraveler application and set the privacy zone size to 0 MB. This renders the drive 100% public, deleting the privacy zone.

**Note: All data will be lost! Backup important files prior to formatting.**

**Q: Can I use more than one DataTraveler with the SecureTraveler simultaneously?**

**A:** No. SecureTraveler can only access one drive at a time.