

# DVD MovieFactory™ 2.5

*User Guide*

*Ulead Systems, Inc.*

*July 2003*

## **Copyright**

*First English edition for Ulead DVD MovieFactory 2.5*

© 2002 - 2003 Ulead Systems, Inc. All Rights Reserved

*No part of this publication may be reproduced or transmitted in any form or by any means, electronic or mechanical, including photocopying, recording or storing in a retrieval system, or translated into any language in any form without the express written permission of Ulead Systems, Inc.*

## **Software license**

*The software described in this document is furnished under a License Agreement which is included with the product. This agreement specifies the permitted and prohibited uses of the product.*

## **Licenses and trademarks**

*ICI Library © 1991–1992 C-Cube Microsystems.*

*Ulead Systems, Inc., Ulead, the Ulead logo, and Ulead DVD MovieFactory are trademarks of Ulead Systems, Inc. All other product names and any registered and unregistered trademarks mentioned in this manual are used for identification purposes only and remain the exclusive property of their respective owners.*

## **Sample files**

*Files provided as samples on the program CD can be used for personal demonstrations, productions and presentations. No rights are granted for commercial reproduction or redistribution of any sample files.*

### **North & South America Ulead Systems, Inc.**

<http://www.ulead.com>  
Support: <http://www.ulead.com/tech>

### **Japan Ulead Systems, Inc.**

<http://www.ulead.co.jp>  
Support: <http://www.ulead.co.jp/tech>

### **Germany Ulead Systems GmbH**

<http://www.ulead.de>  
Support: <http://www.ulead.de/tech>

### **International Ulead Systems, Inc.**

<http://www.ulead.com>  
<http://www.asiapac.ulead.com>  
<http://www.ulead.com.tw>  
Support:  
<http://www.ulead.com/tech>  
<http://www.asiapac.ulead.com/tech>  
<http://www.ulead.com.tw/tech>

### **China Ulead Systems, Inc.**

<http://www.ulead.com.cn>  
Support: <http://www.ulead.com.cn/tech>

# Table of Contents

<b>Welcome to Ulead DVD MovieFactory 2.5 .....</b>	<b>4</b>
Getting around Ulead DVD MovieFactory 2.5 .....	4
<b>Which task should you choose? .....</b>	<b>5</b>
<b>Working on a project .....</b>	<b>6</b>
Add videos or slideshows .....	7
<i>Capture settings</i> .....	8
Trim a video .....	10
Multi-trim video .....	12
Split a video .....	13
Edit a slideshow .....	13
Enhance video .....	14
Setup menus .....	15
Add/Edit chapters .....	17
Preview your movie .....	19
Output your movie .....	20
<b>Direct to disc .....</b>	<b>21</b>
<b>Edit disc .....</b>	<b>23</b>
<b>Copy disc .....</b>	<b>24</b>
<b>Glossary .....</b>	<b>26</b>
<b>Index .....</b>	<b>28</b>

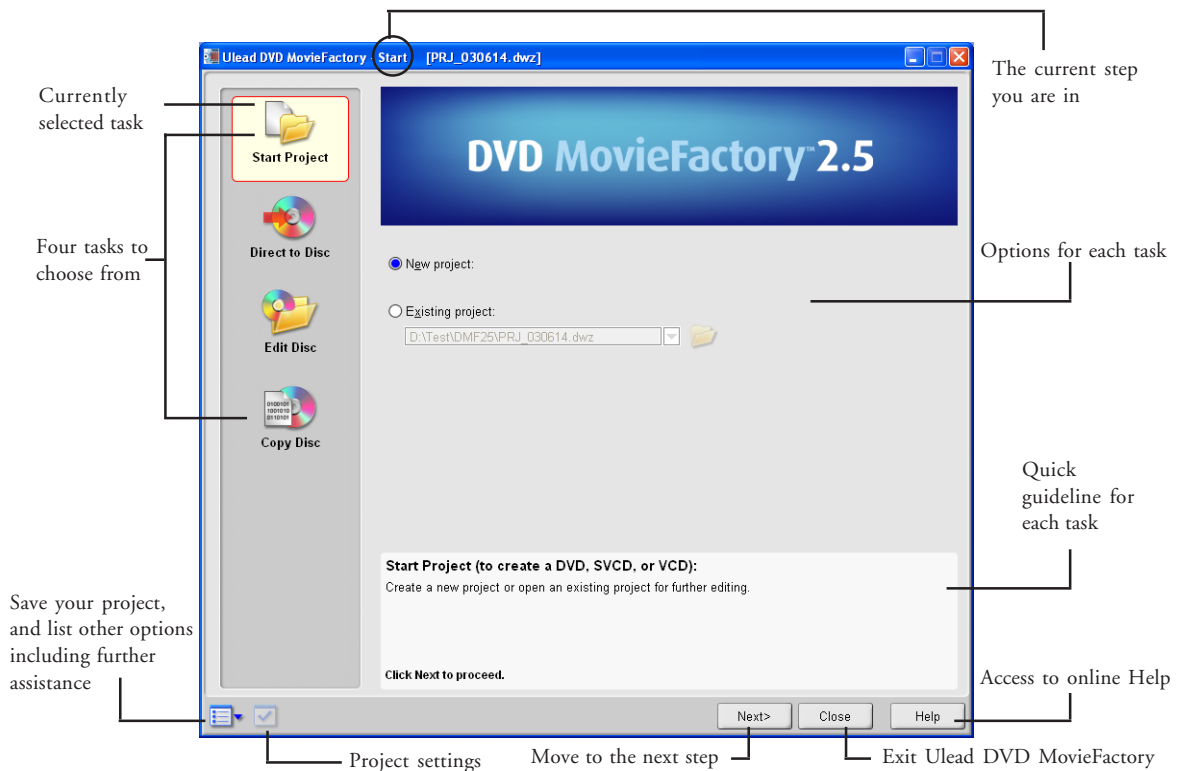
# Welcome to Ulead DVD MovieFactory 2.5

Ulead DVD MovieFactory provides you with the answer to your video disc authoring needs. No matter if the disc is a DVD, VCD or SVCD, DVD MovieFactory takes you there instantly with a user-friendly wizard-type process and specific task-oriented features. With DVD MovieFactory, creating professional-looking video discs has never been easier!

While all crucial information on how to use DVD MovieFactory is included in this document and the online Help, you can further receive the latest program updates, tutorials, technology advance (such as the newest hardware compatibility list), and technical support by visiting your local Ulead Web site.

## Getting around Ulead DVD MovieFactory 2.5

Once you open the program, the first screen you will see is this:



**Note:** The availability of the tasks on the left panel will depend on the DVD MovieFactory version you have.

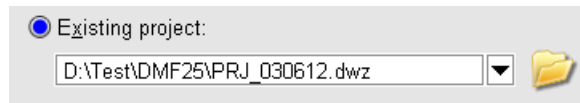
# Which task should you choose?

Now you have an overall picture of how Ulead MovieFactory looks like. The next thing to do is choose the right task that fits your need:

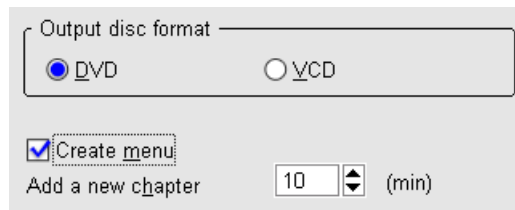
- **Start Project - New project:** Choose this task if you are creating a new DVD MovieFactory project. Click **Next** to add media clips and setup menus.



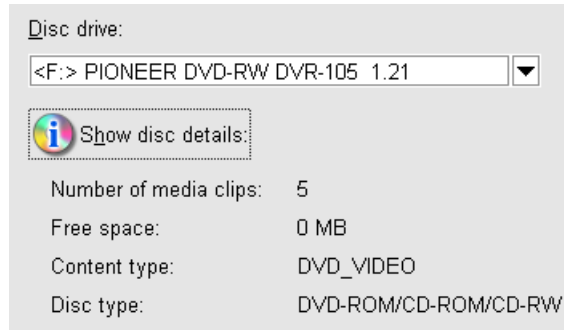
- **Start Project - Existing project:** Choose this task if you already have a previous created DVD MovieFactory project saved on a hard drive or disc. Please use the drop-down list or the browse button to locate a project file (\*.dwz), and then click **Next** to start editing.



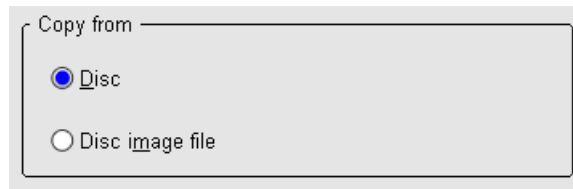
- **Direct to Disc:** Choose this task if you want to capture videos straight from your video device and burn a disc immediately. Please decide an output disc format, whether to create menus, and the length of each chapter. Then, click **Next** to capture videos, setup menus, and finally burn the disc.



- **Edit Disc:** Choose this task to edit the video or an existing DVD MovieFactory project on a disc and record back to the same disc (re-writable only) or another. Please select the disc location on your computer, and then click **Next** to start editing.



- **Copy Disc:** Choose **Copy from - Disc** if you want to make a disc-to-disc (DVD or VCD) copy or burn a disc from a DVD folder located in the hard drive or a disc. You can also choose **Copy from - Disc image file** to copy a disc image file and burn onto a disc. Click **Next** to go to the output step directly.



## Working on a project

Ulead DVD MovieFactory is a project-based program. Each project (\*.dwz) file saves the latest information on your video and menu editing as well as the settings you have made for that project. So, you can always stop or resume your task at your convenience.

**Note:** You can only work on one project at a time in Ulead DVD MovieFactory.

# Add videos or slideshows

Now, you have opened a project. The next thing is to insert media clips into it. These media clips can be videos and/or slideshows. For example, using a compatible video capture card you can capture videos from a video device such as TV or a DV camcorder. You can also add videos from a disc/hard drive, or create slideshows using a series of still images. Once these clips are inserted, you can make further editing and set up selection menus later.

**Note:** As a video or a slideshow is inserted, an associated menu thumbnail is also automatically created in the Preview window. For details on how to setup menus, see page XX.

The screenshot shows the 'Create Media Clip and Menu' window in Ulead DVD MovieFactory. The interface includes a left sidebar with buttons for 'Capture', 'Add Video', 'Add Slideshow', and 'Import DVD Video'. The main preview area displays a menu titled 'My Title' with six video thumbnails and text boxes. Below the preview are fields for 'Background image' and 'Background music'. A 'Media clip list' at the bottom shows five video thumbnails, with the first one selected. A 'Customize' button is next to the list. A menu is open at the bottom, showing options like 'Preferences...', 'Save', 'Open Project...', 'Ulead DVD MovieFactory Help', and 'Exit'. Annotations with arrows point to the 'Add Video' and 'Add Slideshow' buttons, the 'Use first clip as first play video' checkbox, the 'Media clip list', and the text descriptions for editing.

Use any of these buttons to add videos or slideshows.

Select this to create an introduction to your movie. The first play video is always played first automatically after the disc is inserted into a player.

Media clip list (Click a thumbnail to select it.)

Click the text description for editing as needed.

Preferences...	F6
Save	Ctrl+S
Save As...	
Open Project...	Ctrl+O
Disc Template Manager...	
Ulead DVD MovieFactory Help	F1
Ulead on the Web	
About Ulead DVD MovieFactory	
Exit	

## Tips:

- Select **Save [Ctrl+S]** frequently to safeguard the latest update of your project.
- You can change the playback sequence by moving a thumbnail using the drag-and-drop method in the Media clip list.

### Capturing videos:


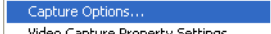

- 1 Click **Capture**. The **Capture Video** dialog box opens.
- 2 Select from **Source**, **Format** (and **TV channel** if capturing from TV signal) to determine capture source and video file format.
- 3 Use the navigation controls to locate the starting point of the video you want to capture.
- 4 Click **Capture Video**.
- 5 Press **[Esc]** to stop. Repeat steps 2 to 4 as needed to capture more videos.
- 6 Click **OK**.

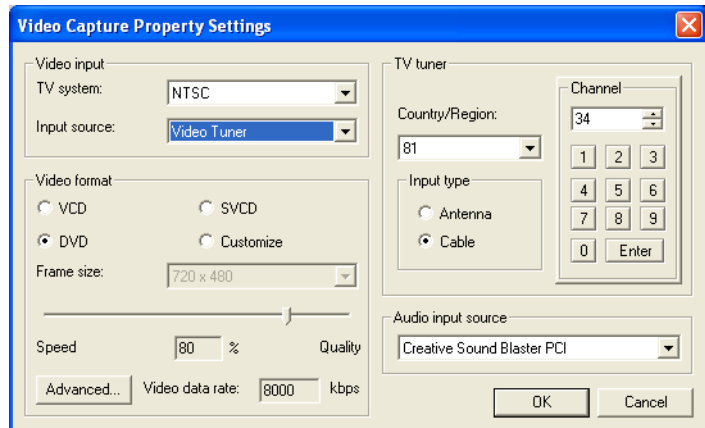
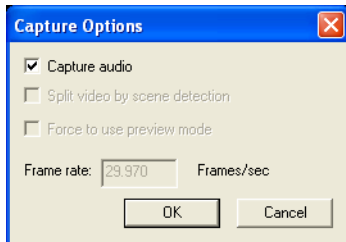
#### Notes:

- All captured videos are stored in the default capture folder. To change the folder, click the browse button.
- The **Capture Video** dialog box is strictly for video capturing. Playing a captured video clip is only possible in the Media clip list of the main window.



## Capture settings

Ulead DVD MovieFactory automatically detects and determines proper capture settings. Yet, you can still make customization. Just click  **Capture Settings** and select from  **Capture Options...** or  **Video Capture Property Settings...**

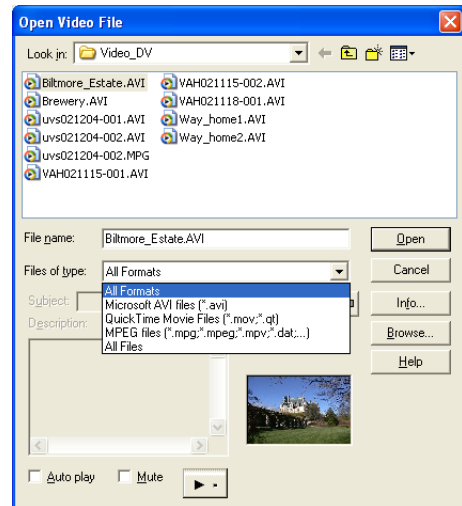


### *Adding videos:*

- 1 Click **Add Video**.
- 2 Locate the folder where the videos are, and then select one or more video clips you want to add.
- 3 Click **Open**.

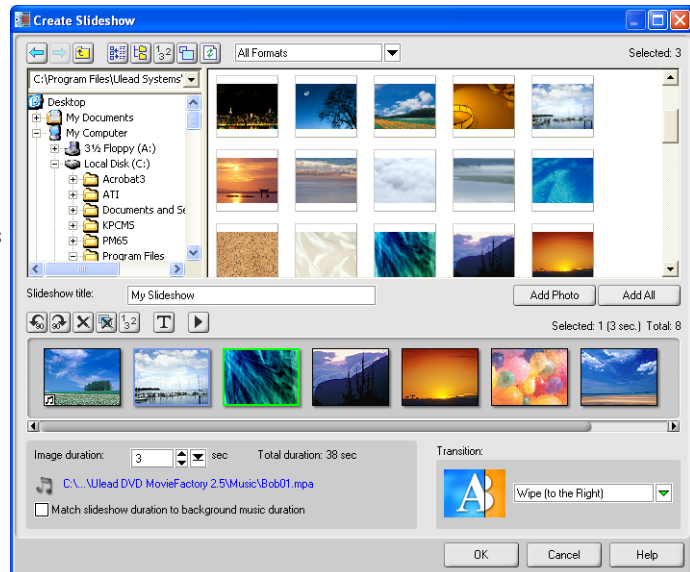
**Note:** You can add video formats such as AVI, QuickTime, and MPEG files. You can also add VCD video (DAT) files.

**Tip:** After a video clip is added to the Media clip list, sometimes you may see a black thumbnail. This is because the first scene (frame) of this video clip is a black screen. To change it, double-click to select this video clip and move the Jog Bar to the scene you want. Next, right-click the thumbnail and select Change Thumbnail.



### *Adding a slideshow:*

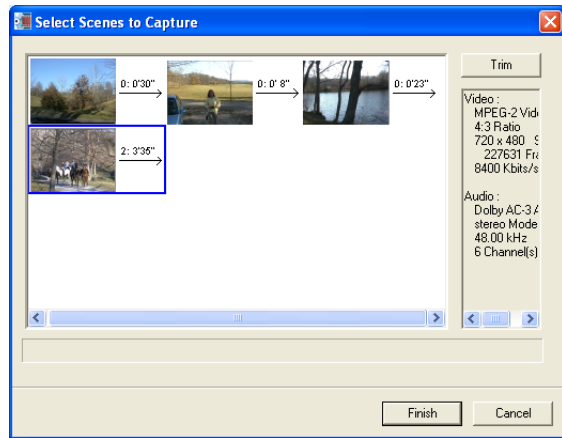
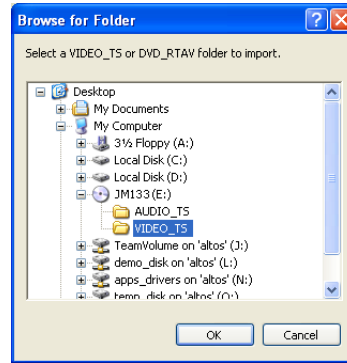
- 1 Click **Add Slideshow**.
- 2 Locate the folder where the still images are and select one or more images. (Use [Ctrl] or [Shift] to select multiple images.)
- 3 Click **Add Photo**. Repeat steps 2 and 3 as needed.
- 4 Add a slideshow title, background music, and transition effect as needed. You can also click **Preview** to check the result.
- 5 After all images are inserted, click **OK**.



### Importing DVD videos:

- 1 Click **Import DVD Video**.
- 2 Locate the folder where the videos are. (For example, locate the VIDEO\_TS folder for the DVD+R/RW or DVD-R/RW format; the VIDEO\_RTAV folder for the DVD-RAM format.)
- 3 Click to select the video clip you want to import, and then click **Finish**. (Use [Ctrl] or [Shift] to select multiple videos) Depending on the video time length, wait a while until the capture process completes.


**Note:** Sometimes you might see some black video thumbnails in the **Select Scenes to Capture** dialog box. This is normal because the first frame for this type of video thumbnails is white or black.

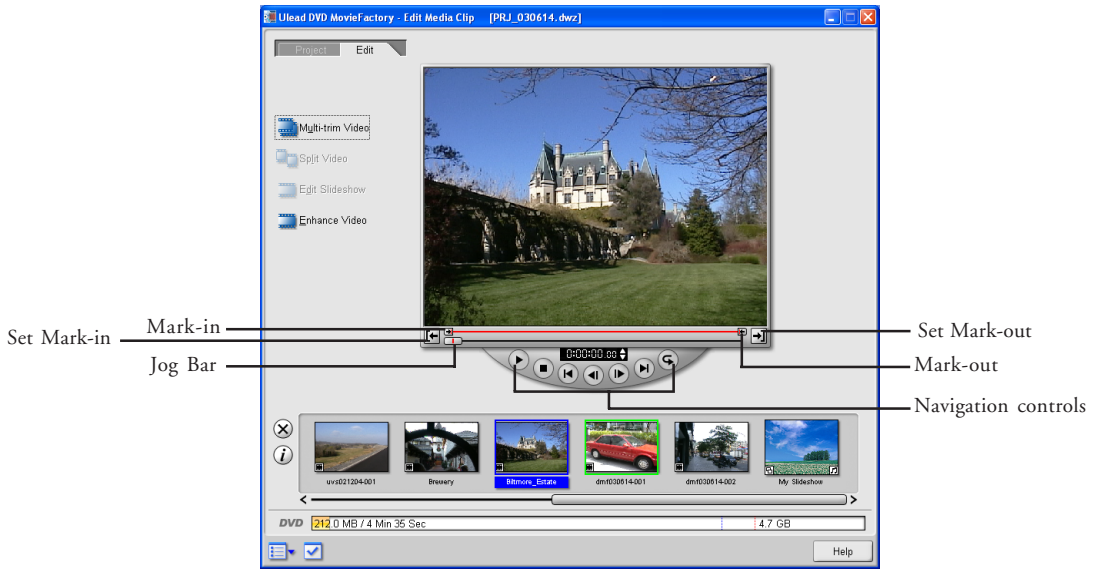


## Trim a video

You can trim a video using the **Jog Bar**, mark-in/out, and navigation controls. (See the illustration below.) Trimming a video gives you the freedom to precisely edit the video length.

### Trimming a video:

- 1 Click the **Edit** tab , and then click to select a video thumbnail on the Media clip list.
- 2 Use the navigation controls or drag the **Jog Bar** to move to the starting point of your desired trimmed video. When you're there, click **Set mark-in**. Alternatively, simply drag **Mark-in** to the starting point.
- 3 Similarly, determine the ending point by using **Jog Bar** and **Set mark-in/mark-out**.
- 4 Now, the trimmed video is ready. (You can preview the trimmed video by holding [Shift], and then clicking **Play** (or pressing the Space bar).



Before trimming





After trimming

# Multi-trim video


Another way to trim your videos is to use the **Multi-trim Video** feature. Trim your video by drawing out specific segments of your clip. This feature allows you to select and trim multiple segments from your clip and then modify your clip according to the segments you have trimmed.

## *Multi-trim videos:*


- 1 Click the **Edit** tab , and then click to select a video thumbnail on the Media clip list.
- 2 Click  **Multi-trim Video**.
- 3 To select segments to keep, select **Retain Selection**. Similarly, to select segments to remove, select **Delete Selection**. Then, use the Jog Bar, quick search buttons, timecode, or playback controls to move between different frames of the video. When you find the starting point of the segment you want, click **Set Mark-in [F3]**. Then, when you reach the ending point of the segment you want, click **Set Mark-out [F4]**.
- 4 Repeat step 2 as needed to trim more segments. When there is more than one segment, each segment is shown in red above the Jog Bar, except that the last segment is shown in green.
- 5 Your trimmed videos will appear on the Media clip list. You can preview the trimmed video by holding [Shift], and then clicking **Play** (or pressing the Space bar).
- 6 Click **OK**.

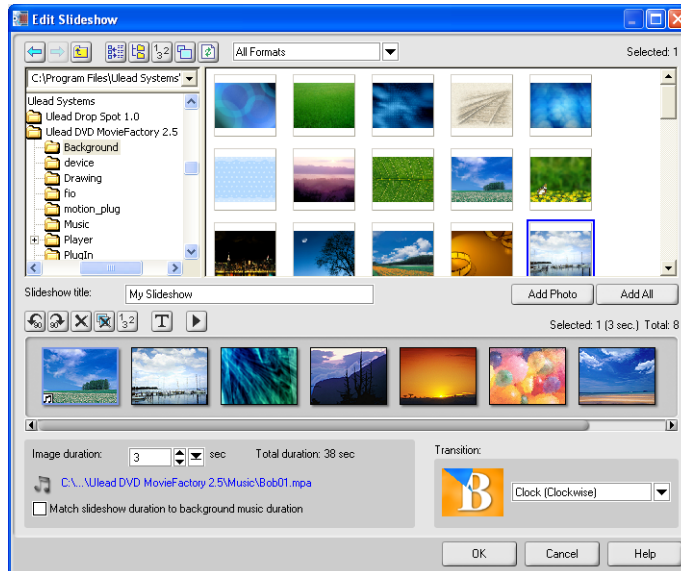


## Split a video

You can add more video thumbnails by breaking an existing video thumbnail into several ones. Simply click to select a video thumbnail in the Media clip list, and then drag the **Jog Bar** to move to the scene you want as the separating point. Next, click  Split Video . You can keep moving the **Jog Bar** and add as many video thumbnails as you like. Note that the original video thumbnail is still retained while new ones are added accordingly based on the number of newly added videos.

## Edit a slideshow



To edit a slideshow, click to select a slideshow thumbnail in the Media clip list. Then, click  Edit Slideshow . When your editing is complete, click **OK**.

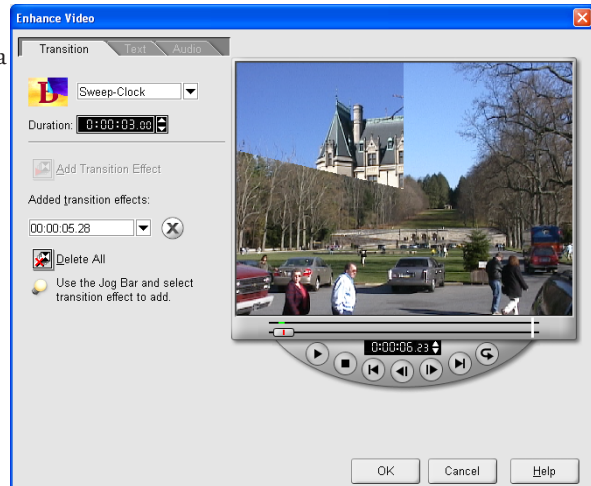


# Enhance video



This feature lets you add transition effects, text, or another audio file to your video.

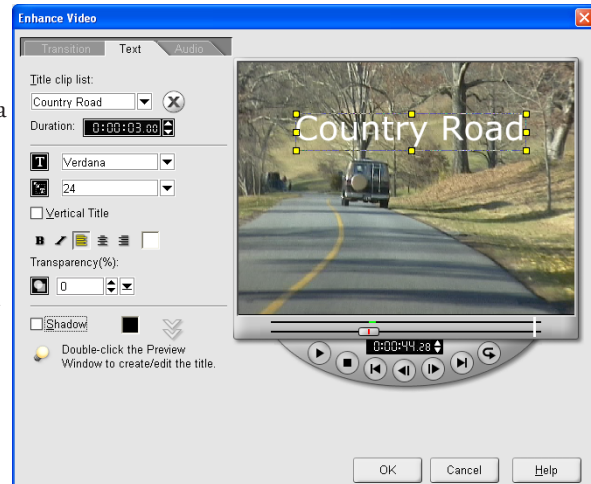
## Adding transition effects:

- 1 Click the **Edit** tab , and then click to select a video thumbnail on the Media clip list.
- 2 Click  **Enhance Video**.
- 3 On the **Transition** tab, drag the Jog Bar or use the playback controls to move between frames in the video. Stop when you reach the point you want to add a transition effect (not available during the first or the last second of a video).
- 4 Select a transition effect from the drop-down list, and enter the time duration as needed.
- 5 Click **Add Transition Effect**.
- 6 Repeat steps 3 to 5 as needed to add more transition effects. You can use the playback controls to preview the result.
- 7 Click **OK**.


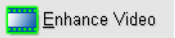


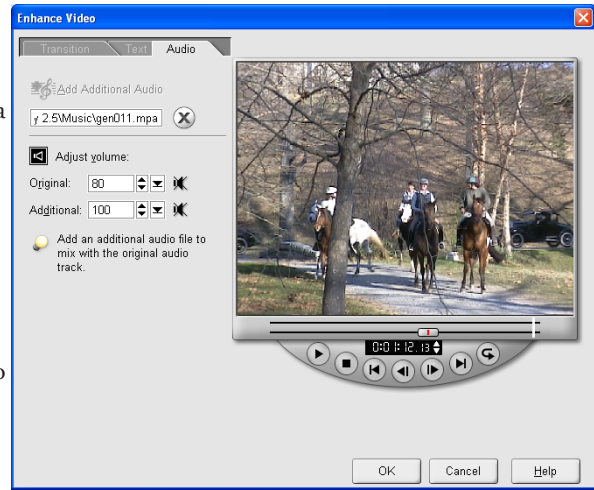
## Adding text:

- 1 Click the **Edit** tab , and then click to select a video thumbnail on the Media clip list.
- 2 Click  **Enhance Video**, and then click the **Text** tab.
- 3 Drag the Jog Bar or use the playback controls to move between frames in the video. Stop when you reach the point you want to add text.
- 4 Double-click the Preview window to start entering the text. You can customize duration, font type, size, color, and many other options as needed.
- 5 Repeat steps 3 to 4 as needed to add more text. You can use the playback controls to preview the result.
- 6 Click **OK**.



### Adding audio:

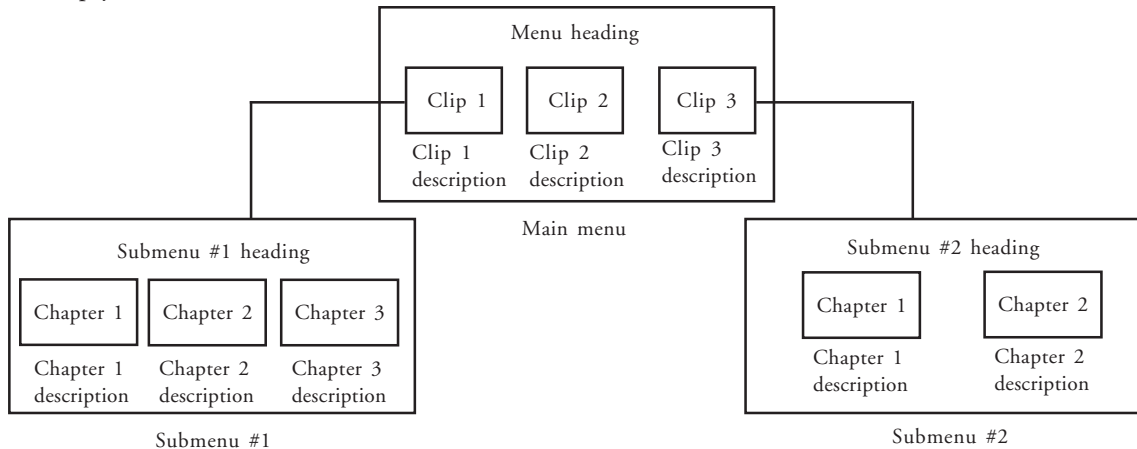
- 1 Click the **Edit** tab , and then click to select a video thumbnail on the Media clip list.
- 2 Click , and then click the Audio tab.
- 3 Click **Add Additional Audio** to locate an audio file you want to add.
- 4 Adjust the volume for the original audio track and the additional one respectively to determine how to mix these two audio tracks. For better adjustment, click **Play** to hear the result.
- 5 Click **OK**.



## Setup menus








At this step, you can create the main menu and submenus. They provide a list of interactive thumbnail-styled options displayed on a screen for your movie viewer to choose from. Ulead DVD MovieFactory offers a set of menu templates to best fit the purpose of each menu. Custom-made menus are also available at your fingertips.

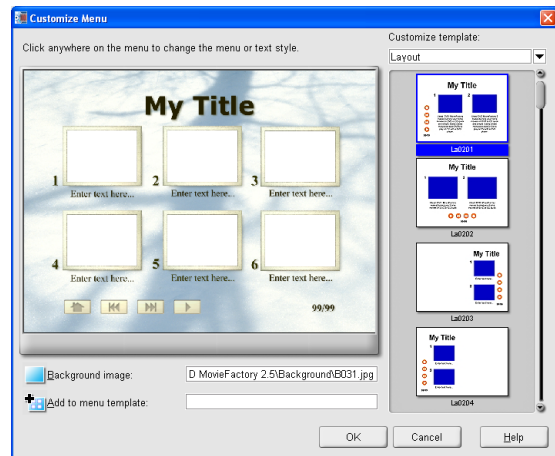
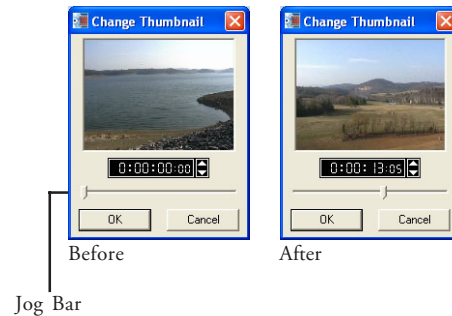
To help you better understand the DVD/SVCD/VCD menu structure, see the illustration below.

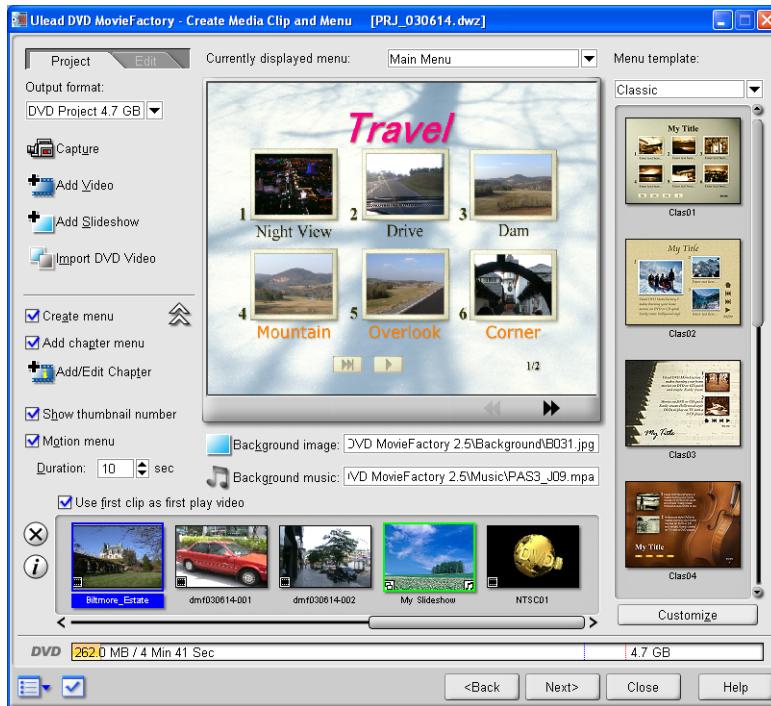


In this example, Clip 1 has three chapters so when you click the Clip 1 video thumbnail, it will jump to submenu #1. If you look at Clip 2, it has no chapters assigned to it therefore there is no submenu for Clip 2.

## Editing menus:

- 1 Click  as needed to make sure you're on this tab, and then click **Show menu options**  to see all available choices.
- 2 By default, DVD MovieFactory automatically makes all required menus for you. Use the direction buttons   under the Preview window to move between different menus as needed.
- 3 Click **Add/Edit Chapter** to customize chapters as needed. (See details in the procedure for adding chapters.)
- 4 Click "My Title" to create the menu heading.
- 5 Click the text description under each video thumbnail to enter its name.
- 6 To change the image shown on each video thumbnail, click it then drag the **Jog Bar** to change (not available when **Motion menu** is selected).
- 7 To change a menu layout, use the **Menu template** list and select another preset.
- 8 You can also click  **Background image:** to use your own background image, or click  **Background music:** to use your background music.
- 9 To further customize and create your own menu template in the **My Favorites** folder, click .
- 10 When you're done, click **Next** to preview the movie.





## Add/Edit chapters

This feature is only available when the **Create menus** option is selected. By doing so, you can create submenus linked to their associated video clip at the **Setup Menu** step later.

Represented as a video thumbnail in a submenu, each chapter is like a bookmark for a video clip. Viewers can easily select a chapter then the video clip will immediately jump to the first scene of that chapter and start the playback. This feature is particularly useful when you want to attract your viewers by giving them the freedom to choose a particular part of the movie to watch. Note that these small video thumbnails only link to its “mother” video without generating any additional physical video files. So, you don’t need to worry about the possibility of unexpected file size increase.

### Notes:

- You can create up to 99 chapters for a video clip.
- If the **Create menu** option is not selected, you will be guided to the **Preview** step immediately without creating any menus after clicking **Next**.

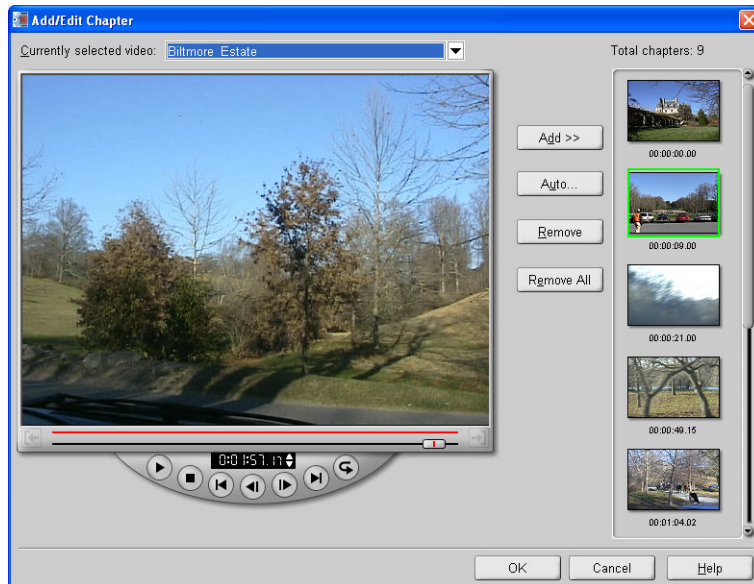
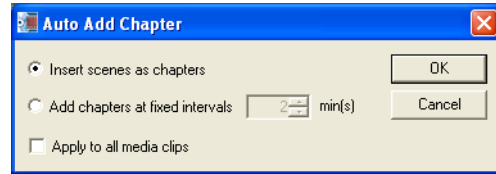
### *Creating or editing chapters linked to a video clip:*

- 1 Select a video in the Media clip list.
- 2 Click **Add/Edit Chapter**.
- 3 Click **Auto** to let Ulead MovieFactory help you select chapters (such as at fixed intervals), or drag the **Jog Bar** to move to a scene as the first frame of a chapter, and then click **Add**.

#### **Tips:**

- If you want to use **Auto**, your video must be at least one minute long or the video has scene change information.
- If you click **Auto** and your video is a DV-formatted AVI file captured from a DV camcorder, DVD MovieFactory can automatically detect scene changes and add chapters accordingly.
- If the selected video is an MPEG-2 file with scene change information, DVD MovieFactory automatically generates these chapters for you when you click **Auto**.

- 4 Repeat Step 3 as needed. You can also use **Remove** or **Remove All** to delete unwanted chapters.
- 5 Click **OK**.



# Preview your movie

Now, it's time to see how your movie looks like before you burn it onto a disc. Simply move the mouse and click **Play** to watch your movie and test the menu selection on your computer. Use the navigation controls here as you would on a standard remote control of a home DVD player.

**Tip:** As you move between controls, a ToolTip pops up and tells you its specific function.



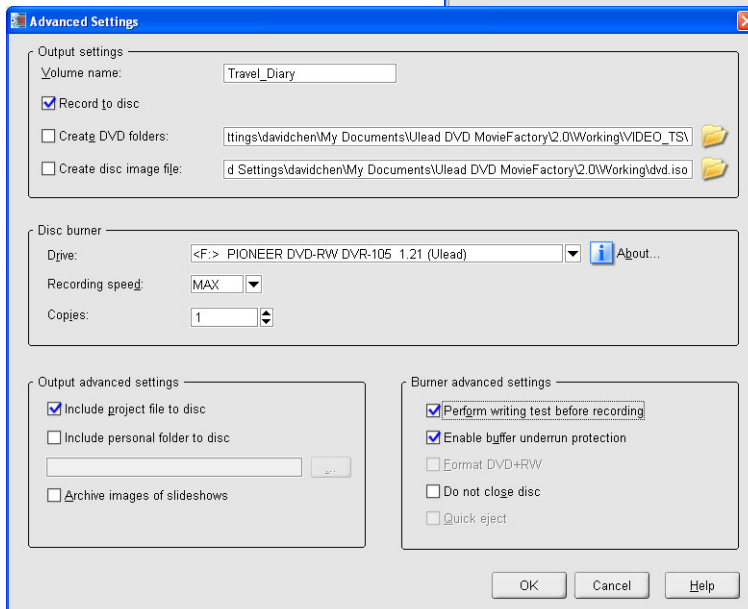
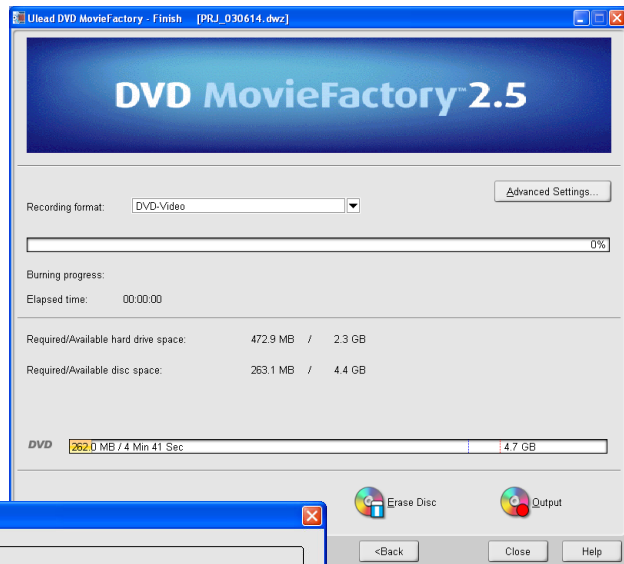
# Output your movie

This is the final step before your video disc or output file is ready. Here, you can choose the disc burner, as well as select the folder where you want to output video files or a disc image file.

**Tip:** Before actual disc burning starts, make sure the disc in the correct format has already been inserted into the disc burner.

## Outputting your movie:

- 1 Select a recording format.
- 2 Click **Advanced Settings**.
- 3 Enter a volume name (up to 32 characters) for the output disc.
- 4 Select a disc burner and make settings (such as the recording speed) compatible with your output disc format.
- 5 Click **OK**.
- 6 Click **Output**.
- 7 The burning progress bar shows you the burning status. Once it is done, click **Close**.



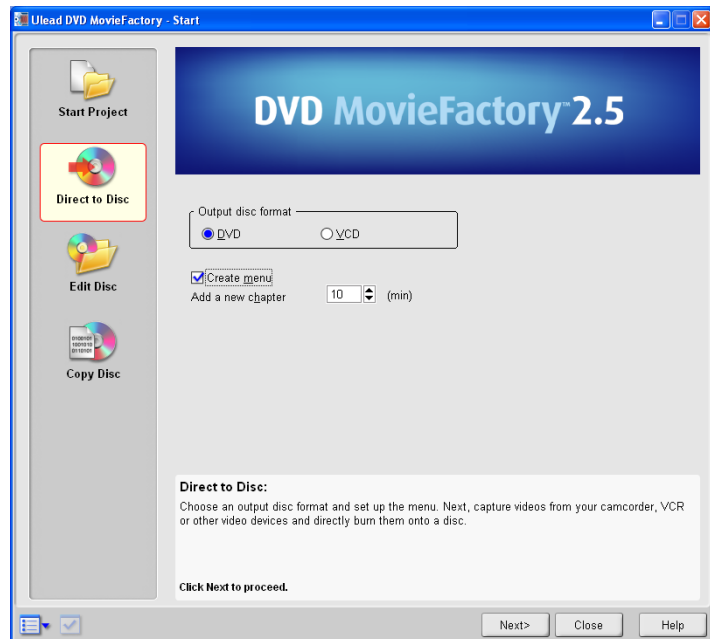
### Notes on how to choose an appropriate recording format:

- DVD MovieFactory provides an option, **DVD+VR**, that allows you to still use the industrial standard DVD-Video format, however, it will only burn the necessary files you need so you can edit your video content (e.g. menus) in the future. This option saves time in copying files and hard drive space when you edit the contents of your disc again but may result in your disc not being compatible with some DVD players.
- If DVD+VR is selected, keep in mind that there is a 30MB file size limitation for menus, background audio and project file combined. Audio files have larger file sizes and therefore it takes up the bulk of this file size limitation. Reduce the file size of your audio (e.g. shorter length) if you plan to have a lot of menus.
- If you choose **DVD-Video**, you will be using the industrial standard DVD-Video format for maximum compatibility. However, you cannot enjoy the advantages brought by the **DVD+VR** option.

## Direct to disc

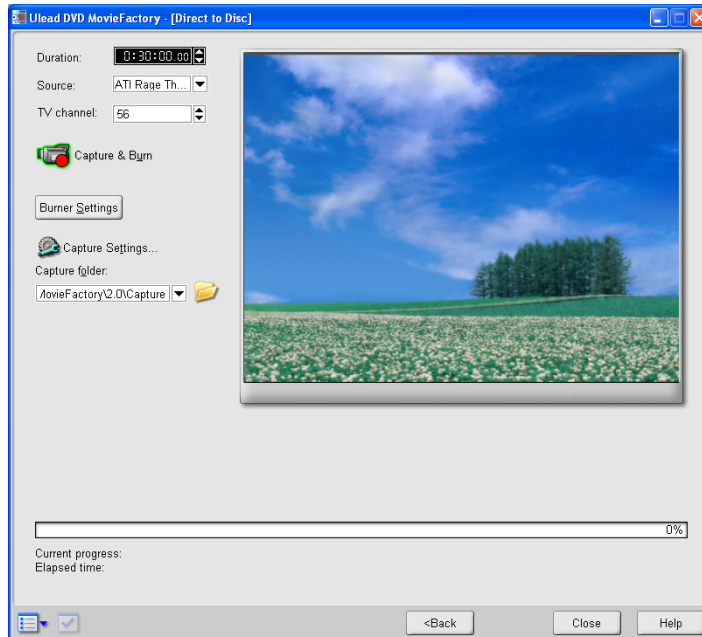
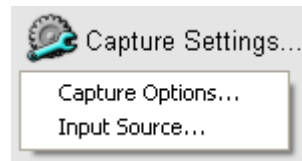
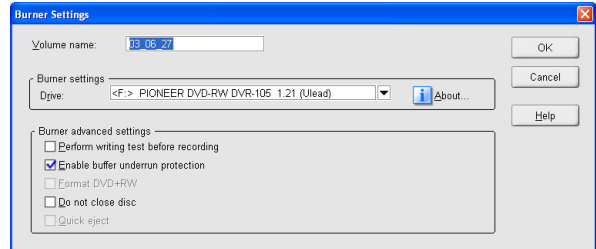
Ulead DVD MovieFactory provides you with a fast way to capture videos directly from a video device (such as DV camcorder, VCR, or TV) through an analog or IEEE-1394 (FireWire) capture card, and then burn a video disc straightaway.

When this task is selected, DVD MovieFactory will initially check both your burner and disc to ensure that there are no problems with your output device and media. Then, you can setup your menu template as well as capture options and settings.



### Directing to a disc:

- 1 Make sure your video source is switched on, and is properly connected to your computer.
- 2 Insert a disc where you want to burn the video onto and then click **Direct to Disc**.
- 3 Select an output disc format and whether to create menus (and chapter intervals). Then, click **Next**. You will then be guided to the **Create Menu** step (when you choose to have menus) and the **Direct to Disc** page.
- 4 In the Create Menu step, determine the title, the video thumbnail description, and the menu template as needed.
- 5 Select the video length to record in **Duration**, the video input source in **Source** (and the **TV channel** when the input source is TV).
- 6 Click **Burn Settings** and **Capture Settings** to determine other options as needed.
- 7 Locate the starting point of your video tape or TV program, and then click **Capture & Burn**.
- 8 Click **Close**.



# Edit disc

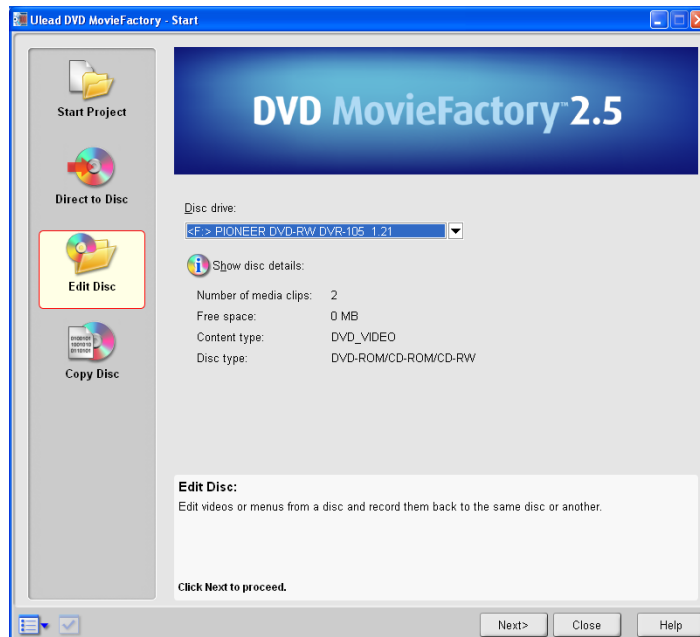
With Ulead DVD MovieFactory, you can modify existing videos and menus on a rewritable disc using a compatible disc burner.

## *Editing a disc:*

- 1 Insert the disc you want to edit, and then click **Edit Disc**. Select **Show disc details** if you want to check the disc technical information. (If you change the disc later, you must select this option again to refresh the latest disc information.)
- 2 Click **Next**. The copying video process starts.
- 3 Add, modify or remove videos/menus as needed, and then click **Next**.
- 4 Preview the movie as needed, and then click **Next**.
- 5 Click **Output**.

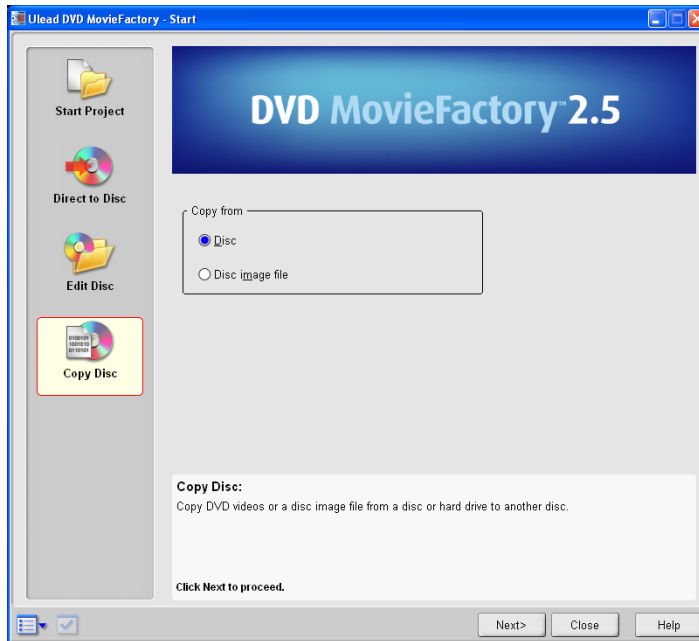
## Notes:

- DVD MovieFactory lets you do direct and fast on-disc editing without the need to copy files to the hard drive first, as long as the disc was previously burned using the DVD+VR option.
- You can edit menus only when they are previously created using Ulead DVD MovieFactory.
- Editing slideshows is not available when editing a disc.



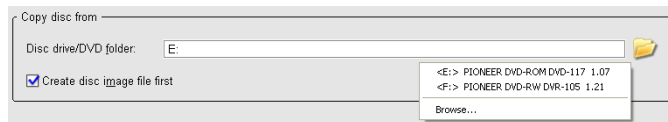
# Copy disc

Here, you can duplicate a disc (DVD, VCD or SVCD), create a disc from your hard drive containing a DVD root folder (including the standard DVD+R/RW or DVD-R/RW's VIDEO\_TS and AUDIO\_TS subfolders), or simply make a disc from an existing disc image file (\*.iso or \*.ixa).



## *Copying a disc:*

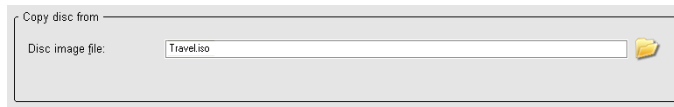
- 1 Insert a disc where you want to duplicate the video onto and then click **Copy Disc**. Now, select **Copy from: Disc** and click **Next**.
- 2 Choose a disc drive or folder containing the DVD root folder.
- 3 Setup the disc burner, and then click **Output**.
- 4 Click **Yes** to erase the existing data (if any) on your disc. The disc burning process will then start automatically.



**Tip:** Select **Create disc image file first** to create the disc image file first on your hard drive before burning the disc. This will reduce the risk of copying errors when duplicating discs.

*Copying a disc from a disc image file:*

- 1 Insert a disc where you want to burn the disc image file onto and then click **Copy Disc**. Now, select **Copy from: Disc image file** and click **Next**.
- 2 Locate the folder containing the disc image file.
- 3 Set up the disc burner, and then click **Output**.
- 4 Click **Yes** to erase the existing data (if any) on your disc. The disc burning process will then start automatically.



# Glossary

## Chapter

A chapter is a link to a video file in a DVD. Viewers select a chapter to see a particular portion of a video clip. A video clip can contain up to 99 chapters.

## Chapter selection menu

In Ulead DVD MovieFactory, we use the word “submenu” to help you distinguish it from the main menu. The main menu contains a number of submenus, depending on how you design them.

## DVD

Its full name is “Digital Versatile Disc” or “Digital Video Disc.” This is an optical disc that can store data, music, or movie with a better quality than VCD and SVCD.

## DVD+R/RW

A DVD storage format used to record DVD once (DVD+R) or multiple times (DVD+RW). This format is promoted by the DVD+RW Alliance (<http://www.dvdrw.com/>).

## DVD-R/RW

A DVD storage format used to record DVD once only (DVD-R), or about 1,000 times of rewrites (DVD-RW). This format is promoted by the DVD Forum (<http://www.dvdforum.com/>).

## DVD-RAM

A DVD storage format used to record DVD. It can be rewritable for about 100,000 times. This format is also promoted by the DVD Forum (<http://www.dvdforum.com/>).

## DVD-Video

A video format used in DVD. It uses MPEG-2 file format for videos and holds about 120-minute videos on a single-sided, 4.7-GB DVD disc.

## DVD+VR

Uses the standard DVD-Video format but gives you better flexibility when editing the contents of your disc again. Using this format may cause your disc to be incompatible with some DVD players.

## First play video

A video serves as an introduction to the movie on a video disc. This video can automatically play as soon as the disc is inserted into a compatible disc player.

## Main menu

The highest level of menus in a video disc. You can access it by pressing the “Menu,” “Title menu,” or “Top menu” button on the remote control of your home DVD player or computer DVD player.

**Menu**

Includes the main menu, submenus, video thumbnails, and navigation controls for viewers to choose from. A menu can also contain menu headings, text descriptions, and feature introductions. Thus, viewers can have a better idea of what the disc content (movie) is about.

**SVCD**

Its full name is “Super Video Compact Disc.” While the available recording time is generally less than a VCD, SVCD’s video and audio qualities are basically between a VCD and a DVD. You can use CD-R/RW to record this type of video.

**VCD**

Its full name is “Video Compact Disc.” It is a video disc holding about 74-minute long MPEG-1 video, which is equivalent to the VHS quality. You can use CD-R/RW to record this type of video.

# Index

## A

Audio 15

## C

Capture settings 8

Capture Video 8

Chapters 17, 18

Copy Disc 6, 24

## D

Direct to Disc 5, 21

Disc image file 25

## E

Edit a slideshow 13

Edit Disc 6, 23

Enhance video 14

Existing project 5

## I

Import 10

## M

Mark-in 11

Mark-out 11

Media clip list 7

Menus 15, 16

Multi-trim 12

## N

New project 5

## O

Output 20

## P

Preview 19

Project settings 4

## S

Slideshows 7, 9

Split a video 13

## T

Text 14

Transition 14

Trim 10

## V

Videos 7, 9