

PVR-TV PE210 Installation Manual

Contents

V1.0

Chapter 1 : PVR-TV PE210 Card Hardware Installation	2
1.1 Package Contents	2
1.2 System Requirements.....	2
1.3 Hardware Installation	2
Chapter 2 : PVR-TV PE210 Quick Installation	3
2.1 The Driver Installation of PVR-TV PE210.....	3
2.2 HyperMedia Application Installation.....	4
2.3 The Remote Installation of PVR-TV PE210.....	5
Chapter 3 : PVR-TV PE210 Quick Uninstallation.....	6
3.1 The Driver Uninstallation of PVR-TV PE210	6
3.2 HyperMedia Application Uninstallation	6
3.3 The Remote Uninstallation of PVR-TV PE210	7
Chapter 4 : HyperMedia Introduction	8
Chapter 5: Remote Control Description.....	9
Chapter 6 : FAQ	10
1. How to check if the driver has been installed successfully or not?	10
2. How to check if the Remote Control can work fine?.....	10
3. How to uninstall all of device driver and software utility?.....	10

Note: For multi language installation manual, please install **Adobe Acrobat Reader** from autorun after inserting the CD into the CD ROM. Click **“Browse”** and open **Installation Manual** file where multi-language installation manuals are in.

Chapter 1 : PVR-TV PE210 Card Hardware Installation

1.1 Package Contents

Unpack your PVR-TV PE210 card package and make sure that all items are intact. The following items should be included in your package:

- PVR-TV PE210 PCI Card
- Multi-cable (for CVBS, S-Video & Audio-out)
- Connector (NT-M to PAL-F)
- Remote control and sensor
- FM antenna
- Quick guide
- Installation CD

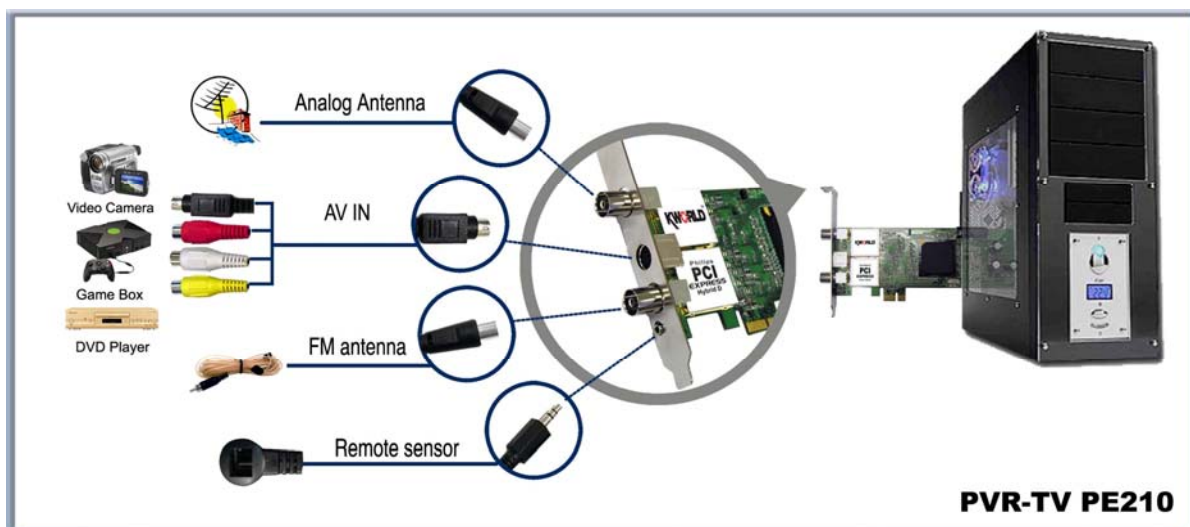
1.2 System Requirements

- PC with Pentium-IV 3.0GHz or higher (recommended)
- 512MB RAM of system memory or above (recommended)
- PCI Express compliant slot
- Graphics Card (Must support DirectX 9.0c)
- Sound Card (AC97 compatible sound card)
- 1GB Free HD Space for recording
- CD-ROM Drive (For software installation)
- Microsoft Windows ® XP SP2 / Media Center Edition

1.3 Hardware Installation

Please follow the steps shown below for installation of your TV card and follow the pictorial guide below for peripheral connections.

1. Turn off your computer.
2. Select a PCIe slot and remove the slot cover, screw, etc.
3. Place PVR-TV PE210 Card firmly into the slot and secure the card.
4. Close the computer's case and turn on the power.



Chapter 2 : PVR-TV PE210 Quick Installation

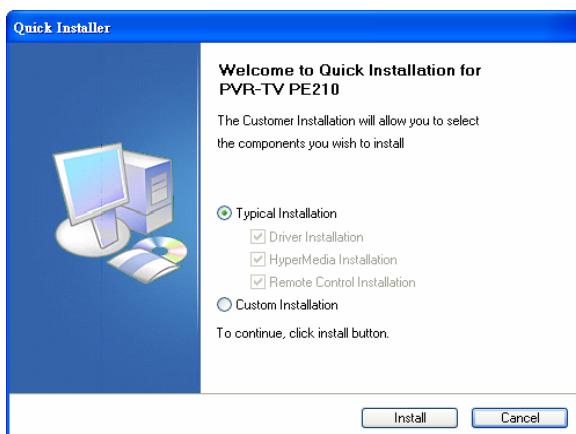
The PVR-TV PE210 card package comes with complete Windows software utilities. These utilities can be found on the CD-ROM in this package. During installation, it is highly recommended to disable any sub-programs. These include applications such as antivirus software and system monitoring applications.



1. When you finish the hardware setup and restart your system. The “Found New Hardware Wizard” window will pop up. Please click “**Cancel**” and you can make use of PVR-TV PE210 Quick Installation for proper installation.



2. Insert the installation CD into the CD ROM device. The autorun page will appear as the left image. Please choose “**Quick Installation**”.



3. The Quick Installation provides you with two choices to install. If you want to install device driver and software utility completely, please choose “**Typical Installation**”. or if you want to install them partially, please choose “**Custom Installation**”. Finally click “**Install**” to continue.

2.1 The Driver Installation of PVR-TV PE210



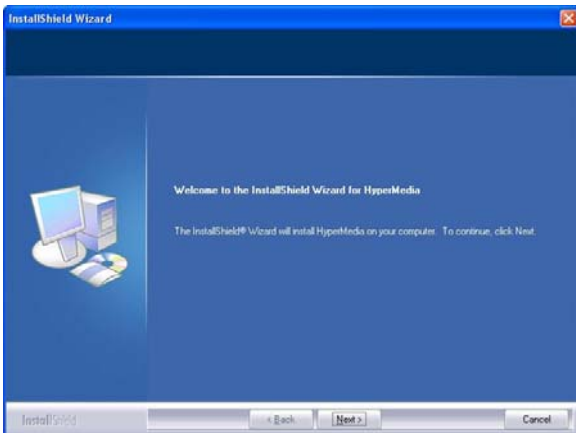
4. Click “**Start**” to install the PVR-TV PE210 BDA driver. Please wait, while the installation is in process.



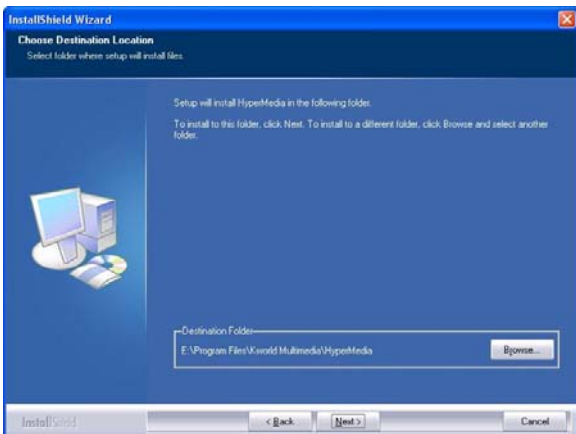
5. Now the driver has been installed successfully on your computer and click “**OK**” to finish driver installation and go to next step.

2.2 HyperMedia Application Installation

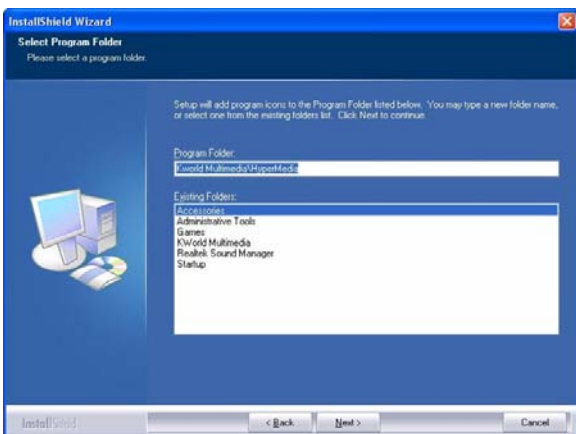
This step will instruct you to install HyperMedia Application. Please follow the steps below for installation.



6. The InstallShield Wizard will guide you through installation of **HyperMedia** application. Click “**Next**” to continue.



7. Please choose the destination folder where you want to install the files. You can click “**Browse**” to change the destination folder. Finally click “**Next**” to go to next step.



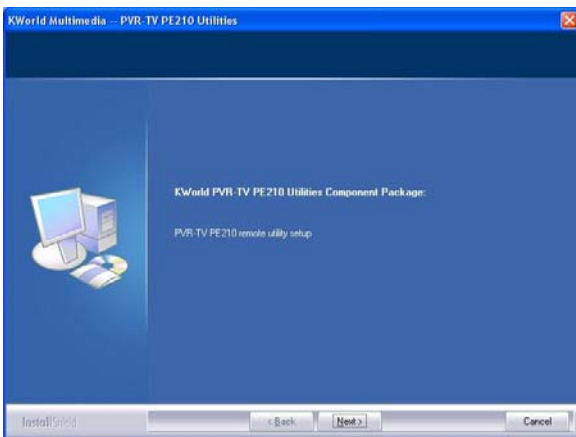
8. Setup will add program icons to the Program Folder’s list. You may type a new folder name, or select one from the existing folders list. Click “**Next**” to start installing. Please wait while installation in process.



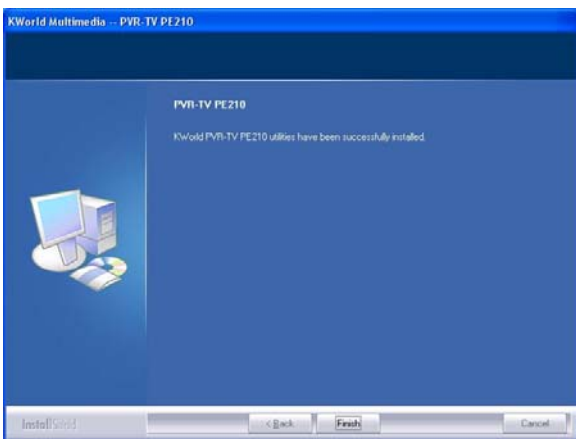
9. When the message as the one on the left image, click “*Finish*” to end the installation.

2.3 The Remote Installation of PVR-TV PE210

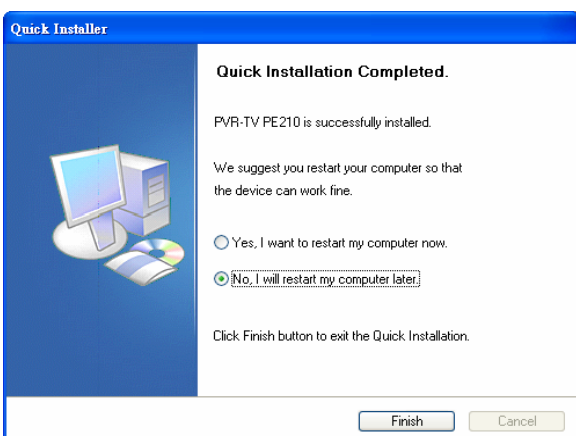
This step will instruct you to install the remote utilities of PVR-TV PE210. Please follow the steps below for installation.



10. The InstallShield Wizard will guide you through installation of PVR-TV PE210 remote utilities. Click “*Next*” to continue.



11. PVR-TV PE210 utilities have been installed. Please click “*Finish*”.



12. All the drivers have been installed successfully. Please choose “*Yes, I want to restart my computer now*” to restart your computer (**Recommend**) and click “*Finish*” to end the installation.

Chapter 3 : PVR-TV PE210 Quick Uninstallation



1. If you want to uninstall device driver and software utility, please click “**Quick Uninstallation**”.

Note: You can also take another way to uninstall device driver and software utility, please refer to chapter 6 FAQ 3.



2. The Quick Uninstallation provides you with two choices to uninstall. If you want to uninstall device driver and software utility completely, please choose “**Typical Uninstallation**”. or if you want to uninstall them partially, please choose “**Custom Uninstallation**”. Finally click “**Uninstall**” to continue.

3.1 The Driver Uninstallation of PVR-TV PE210



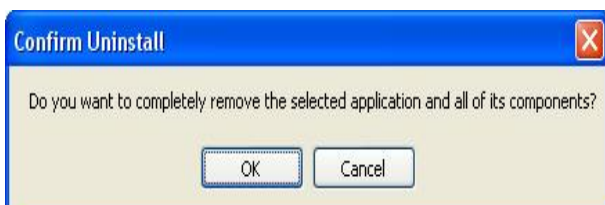
3. Click “**OK**” to uninstall the PVR-TV PE210 BDA driver. Please wait, while the uninstallation is in process.



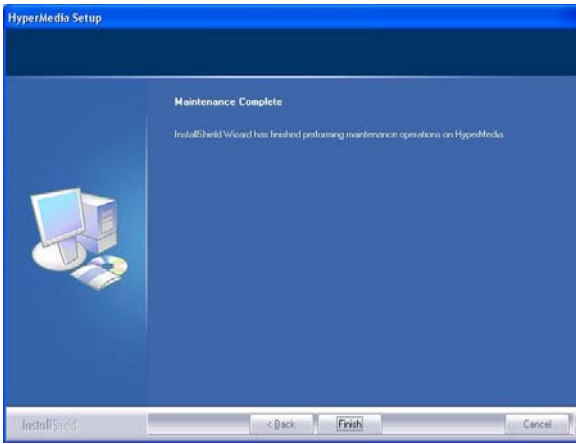
4. Now BDA driver has been removed successfully on your operation system and click “**OK**” to go to next step.

3.2 HyperMedia Application Uninstallation

This step will instruct you to uninstall HyperMedia Application. Please follow the steps below for uninstallation.



5. This step is to remove HyperMedia application. Please click “**OK**” to execute.



6. The UninstallShield Wizard will guide you through uninstillation of **HyperMedia** application and when the message as the one on the left image, the HyperMedia has been removed. Please click “**Finish**” to end.

3.3 The Remote Uninstallation of PVR-TV PE210

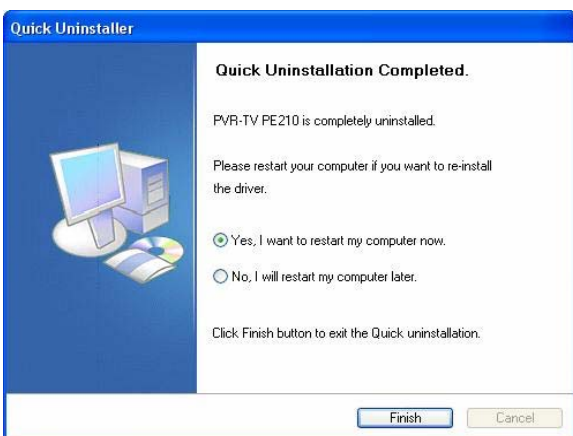
This step will instruct you to uninstall the remote utilities of PVR-TV PE210. Please follow the steps below for uninstillation.



7. This message notices you again to make sure whether you really want to remove utilities. Please click “**Yes**” to execute removing.



8. The remote function has been successfully removed. Please click “**OK**”.



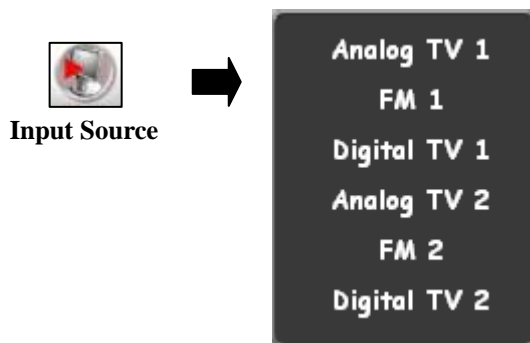
9. All the drivers have been removed completely. Please choose “**Yes, Reboot computer immediately**” to restart your computer (**Recommend**) and click “**Finish**” to end the uninstillation.

Chapter 4 : HyperMedia Introduction

HyperMedia is a multi-function application including watching TV, listening to the FM radio, editing film and burning DVD function. When using it, there are two main accesses to choose, one is “Input Source” for selecting TV & radio function and another is “Extra application” for film function. Picture below is an example of how the interface looks like and a short description of each function.



「Input Source」: Select signal sources. *Note



「Extra Application」: You can convert AVI file to MPEG, edit film easily & burn the film into VCD , SVCD and DVD.



Note:

1. When you click “Input Source” button, you can choose different signal sources, such as Analog TV(ATV), Digital TV(DTV) and FM radio, however, it must depend on your TV tuner device.
2. For more detailed descriptions, please refer to HyperMedia user manual.

Chapter 5: Remote Control Description



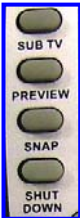
POWER : Press this button to turn on the TV box and press again to turn off it.



No Function.



: **Number Keys (0~9)**

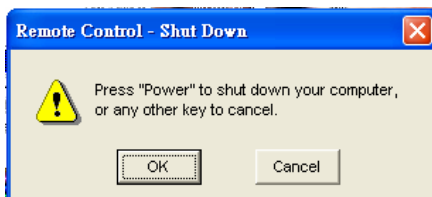



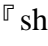

SUB TV : Call the second TV.

PREVIEW : Preview the TV programs multiply.

SNAP : Capture the on-screen image to a file.

SHUT DOWN : Shut down the PC.



Please press 「」 button to turn off the “*HyperMedia*” and then press 「」 button. After that, it will appear a warning-message window. Press 「」 button again to shut down.



MUTE : Turn on/off the Audio.

STEREO : Switch to audio(Stereo, SAP or MONO).

SOURCE : Switch to Video Source(Antenna, Cable, Memory, Composite, S-Video)

ZOOM : Switch to screen mode.

MIN : Minimize HyperMedia application.

 **SWITCH** : Switch screen 1 to screen 2.



Channel Up/Down : Click this button to go to next/previous channel.



Volume -/+ : Click this button to decrease/increase the audio volume



TIMESHIFT : Time Shifting

STOP : Stop Time Shifting function.

REC : Record the current program.



: Fast Rewind & Forward



: Pause & Play



: Stop



: Previous & Next Chapter



FUN1 : Scan all TV channels.

FUN2 : OSD.

FUN3 : Sleep Timer.

FUN4 : Switch to RF signal source.

Chapter 6 : FAQ

1. How to check if the driver has been installed successfully or not?

Ans : Right click on “My Computer” on the desktop and choose “Properties”. Once in “Properties” window, click on “Device Manager” in Hardware panel. Click on the plus icon of “Sound, video and game controllers” to open the device list. See **Fig. 1** below.

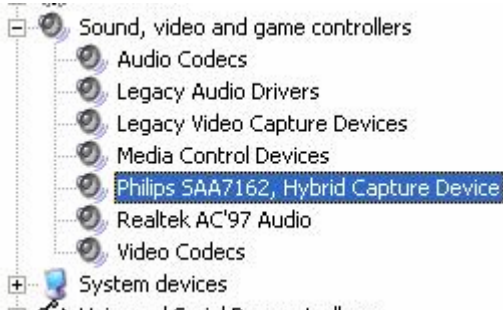


Fig. 1

2. How to check if the Remote Control can work fine?

Ans : 1) You have to check if the “Remote Control” utility is installed or not. Please refer to **Fig. 2**.
2) You have to check if the driver has been installed or not. See FAQ-2.
3) You can check if the “Remote Control” tray icon is loaded in the right-bottom of task bar.

See **Fig.3.** below.

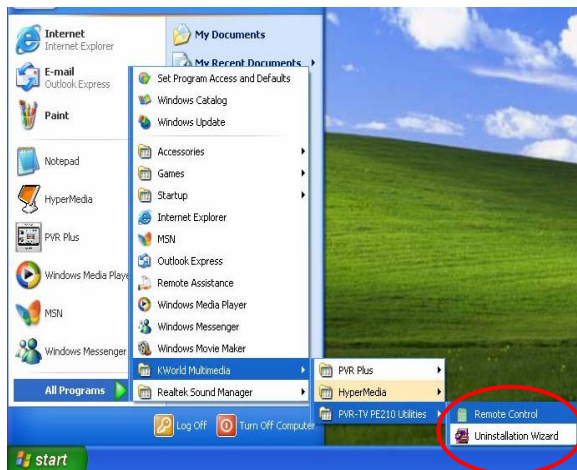


Fig. 2

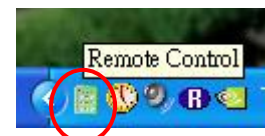


Fig.3

3. How to uninstall all of device driver and software utility?

Ans : 1) You can put the installation CD into CD-ROM device to execute “Quick Uninstallation”.
2) You can also follow the step (Start→All Programs→KWorld Multimedia→Uninstallation) to Uninstall. Please refer to **Fig.4**



Fig.4