



Export to YouTube

Copyright and Trademark Information

The tutorial and all its contents are protected by copyright and are the property of Nero AG. All rights reserved. This tutorial contains material that is protected by internationally valid copyright. No part of this tutorial may be reproduced, transmitted or transcribed without the express written permission of Nero AG.

Nero AG rejects any claims that transcend the clauses of the guarantee rights. Nero AG does not under-take any liability for the correctness of the content of the tutorial. The contents of the tutorial may be changed without prior notice.

All trade names and trademarks are the property of the respective owners.

The trademarks mentioned here are named for information purposes only.

Copyright © 2007 Nero AG and its licensors. All rights reserved.

Export to YouTube

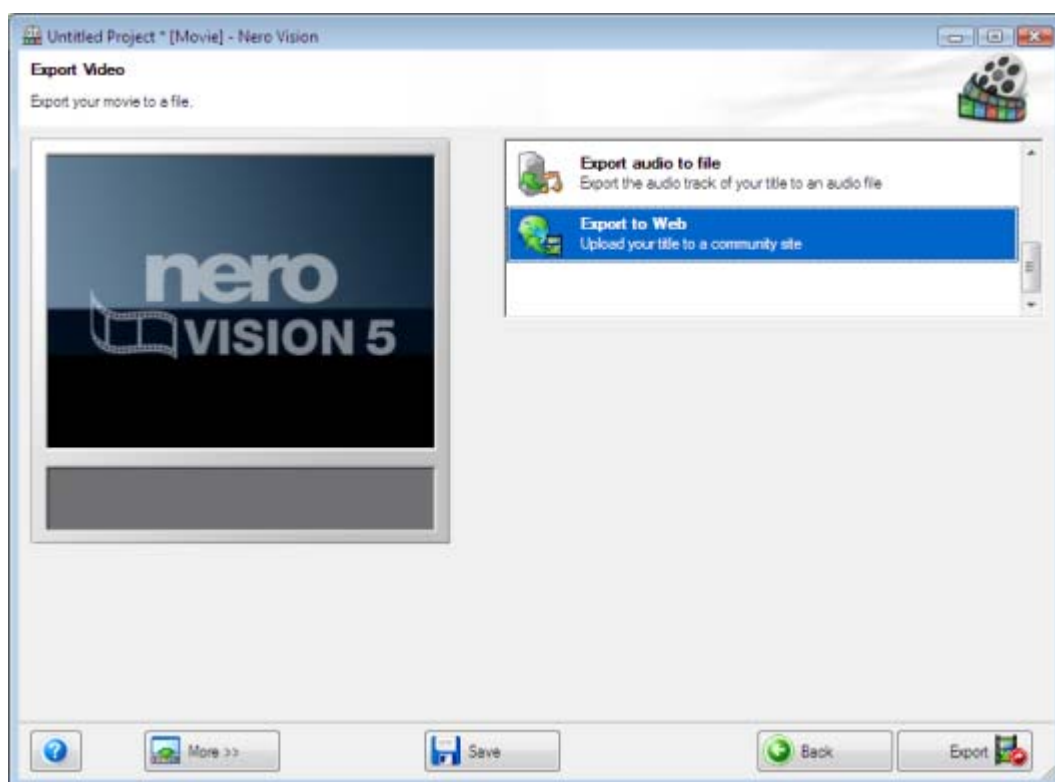
In this tutorial you can follow the step by step procedure for exporting a movie in Nero Vision to the YouTube community.

The following requirements have to be fulfilled:

- You have started Nero Vision.
- You have opened a video for editing in the **Movie** screen or you have added at least one video to your project in the **Content** screen.

To export a movie to the Internet, proceed as follows:

1. Click the **Export** button.
→ The **Export Video** screen appears.



Export Video screen

2. Select the **Export to Internet** export option in the selection area and click the **Export** button.
→ A window informs you that your video must now be converted to an export file.
3. Click on the **Yes** button.
→ The video is exported to a file. Progress is displayed in the same window.
→ As soon as the export file has been created, the **My Nero Login** window opens during the first import or export from/into the Internet.
4. Click on the **Cancel** button.
→ The **Upload to Internet** window opens. Here, you can specify all information about the export file.



Communities normally limit the maximum length of a video file to 10 minutes with a maximum file size of 100 MB. If the movie is too long, an error message is displayed and Nero Vision cancels the procedure.



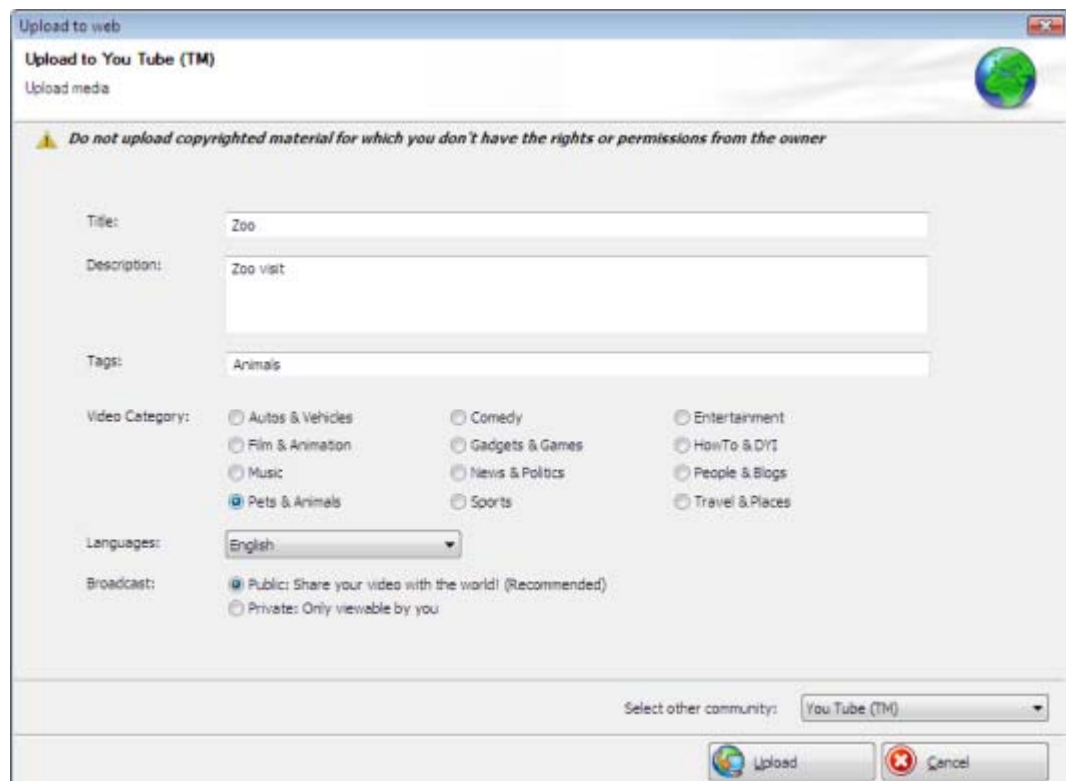
When starting the export function, Nero checks whether new configuration files are available. A window informs you if there are any recommended or required updates.

5. In the lower right area of the window, select the **YouTube** entry in the **Select other community** combo box.

→ The input fields of the selected **YouTube** community are displayed accordingly.

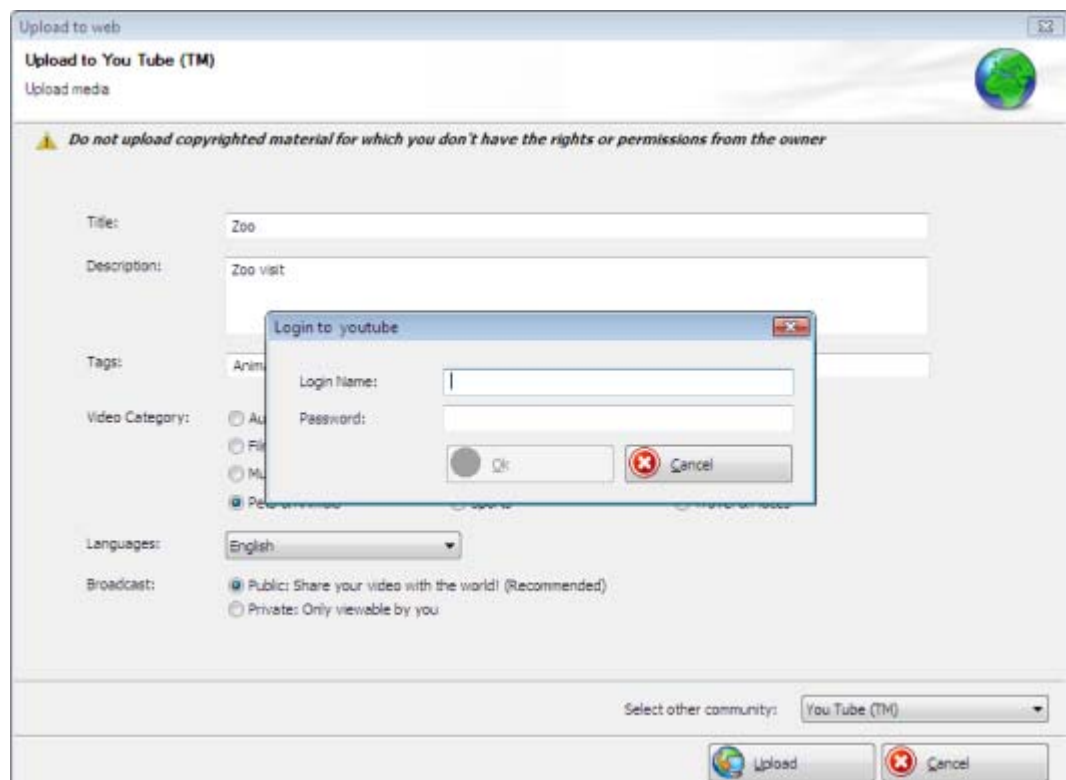
Upload to the Internet window

6. Enter the video title in the **Title** input field.
 7. Enter a short description of the video in the **Description** text box.
 8. Enter the appropriate keywords in the **Keywords** input field and/or activate the check boxes for the desired video categories.
 9. Select the video language in the **Languages** combo box.
- The **Upload** button is enabled once you have made all the required entries.




Upload to the Internet window

10. Click the **Upload** button.
- ➔ The window **YouTube Login** is opened.



YouTube Login window

- 
11. Enter your **Login Name** and **Password** for the **YouTube** internet community in the input fields and click **OK**.
- ➔ The export starts. The export progress is displayed in the same window. Nero Vision automatically returns to the screen that was displayed before the export.
 - ➔ You have exported a movie to the Internet.

Nero Vision is a product of Nero AG



Nero AG

Im Stockmädle 13-15

76307 Karlsbad

Germany

Copyright © 2007 Nero AG and its licensors. All rights reserved.