

ADSL USB Modem

Easy Start (Read Me First)

Version 1.0



Contents...

Safety Guidelines.....	1
This Easy Start	1
Minimum System Requirements	1
Package.....	1
Front Indicators.....	1
Step 1: Connecting Your ADSL USB Modem	2
Step 2: Installing Your ADSL USB Modem Driver	3
2.1 For Windows® 98 / 98 SE	3
2.2 For Windows® Me.....	5
2.3 For Windows® 2000.....	8
2.4 For Windows® XP	10
Step 3: Configuring your Internet browser.....	14
Step 4: Connecting to the Internet	14
Uninstalling Your ADSL USB Modem Driver.....	15

- Product warranty does not apply to damage caused by lightning, power surges or wrong voltage usage.
- This product is for use only in UL Listed computers.

Safety Guidelines

- Keep the modem away from fluid, direct sunlight and excessive heat.
- During times of lightning strike/thunderstorm, do not use the modem.
- This product is for use only in UL Listed computers.
- To reduce the risk of fire, use only No. 26 AWG or larger telecommunications line cord.



On commonly asked questions or for problems encountered during the setting up / running of your modem, please refer to the **Frequently Asked Questions (User Manual folder)** on your Installation CD.

This Easy Start

This booklet contains information on setting up your ADSL USB Modem. It touches on the key installation procedures to help you setup your modem!

Minimum System Requirements

- IBM PC-based computer with Pentium® 233 processor MMX
- 32MB RAM
- 20MB free hard disk space
- A free USB Port
- CD-ROM drive
- Operating System Support:
Windows® 98 / 98 SE
Windows® Me
Windows® XP
Windows® 2000

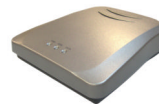
Mac OS Requirement.

- Mac G4 or Higher
- 32MB RAM
- 20MB free hard disk space
- USB Port
- Operating System Support:
Mac OS 9.X
Mac OS 10.X

Package

(The actual cables that are included with your package may differ in appearance from country to country)

ADSL USB Modem



Installation CD



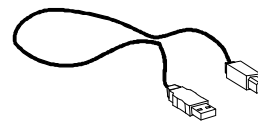
Telephone extension cable



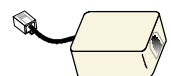
Easy Start



USB Cable



Micro-Filter ¹



¹ *Additional Micro-Filter can be purchased separately from your dealer.*

Front Indicator

Power: Lights up when power is supplied via the USB port from your PC.

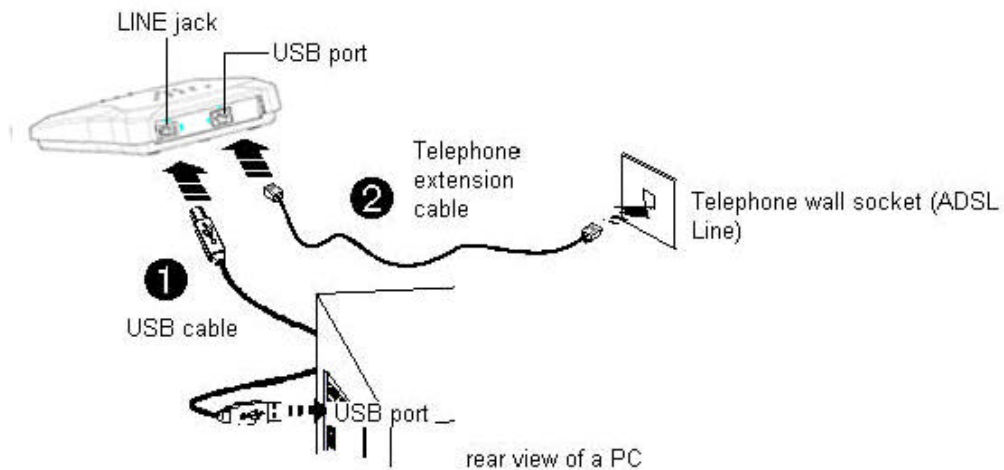
DSL: Lights up when the ADSL line is established.



Data: Blinks when modem is transmitting/receiving data.

Step 1: Connecting the ADSL USB Modem

With the "Hot Swap" feature in this modem, you can connect your modem to your computer anytime, without having to power off your system!

Carry out the connections as illustrated.



- 1** Connect one end of the **USB cable**  to the **USB Port** on the **modem** and the other end  to the **USB port** of your computer.
- 2** Connect one end of the **telephone extension cable** to the **Line Jack** on the **modem** and the other end to a **telephone wall socket**.

Step 2: Installing Your ADSL USB Modem Driver

Power on your computer (if it is not powered on during connection). If you have connected the USB cable from your computer to your modem as illustrated in **Step 1**, you will be prompted with the following window to install the driver.



This guide contains Windows drivers Installation instructions. For Macintosh drivers' installation instructions, please refer to the User Manual/Mac User Guide on your Installation CD.

2.1 For Windows® 98 / 98 SE

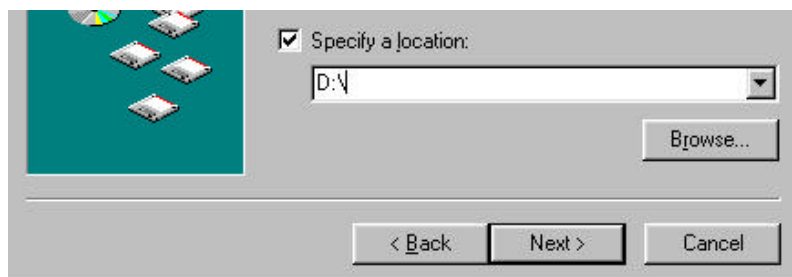


The screen captures, screens information and steps illustrated in this manual serve only as a guide. The exact information and steps you see on your system may vary, depending on your system configurations. For any dissimilarity, follow closely to the instructions as prompted on your PC screen.

- i Place the **Installation CD** into your CD-ROM Drive and click **Next**.



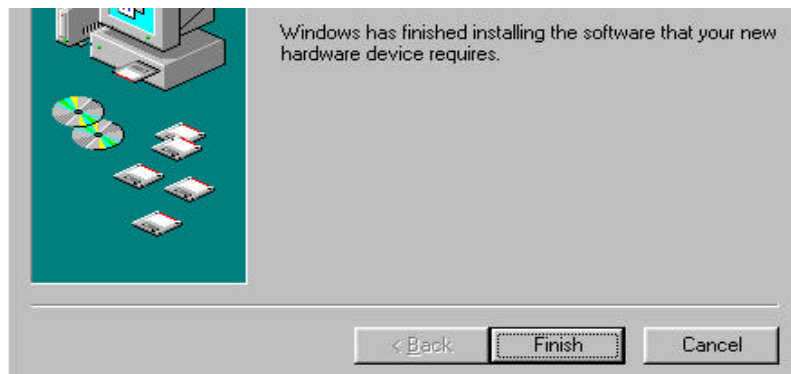
- ii Select **Search for the best driver for your device (Recommended)** and click **Next**.
- iii Click **Specify a location**. Type **D:** (depending on your CD drive) on your PC and click **Next**.



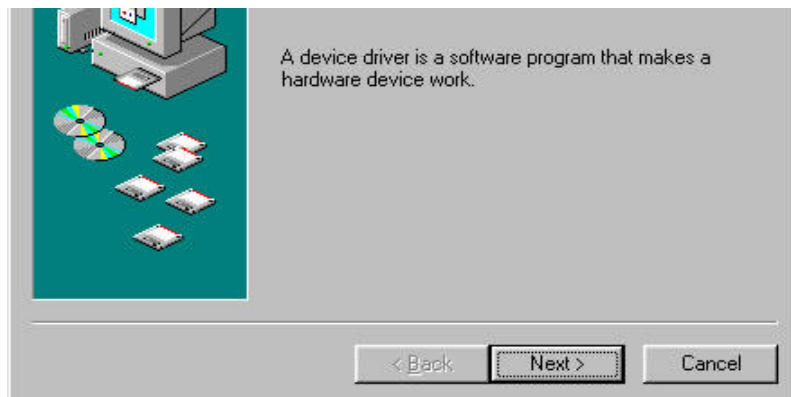
- iv Click **Next** again to proceed with installation with the driver.



- v. Click **Finish** to complete the driver installation.



- vi. After installation of USB Network Interface is completed, another screen shows the installation of the USB Network adapter. At the following prompt, click **Next**.

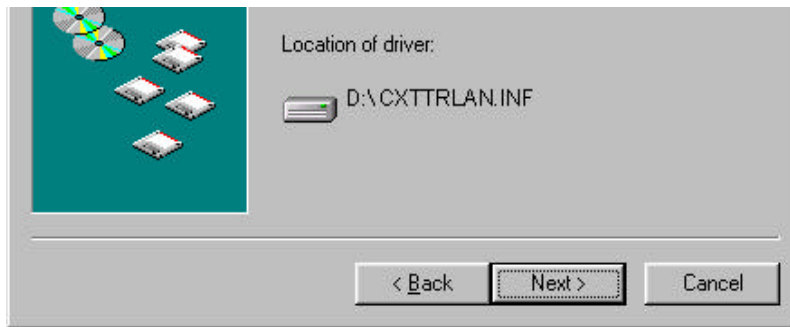


- vii Select **Search for the best driver for your device (Recommended)** and click **Next**.

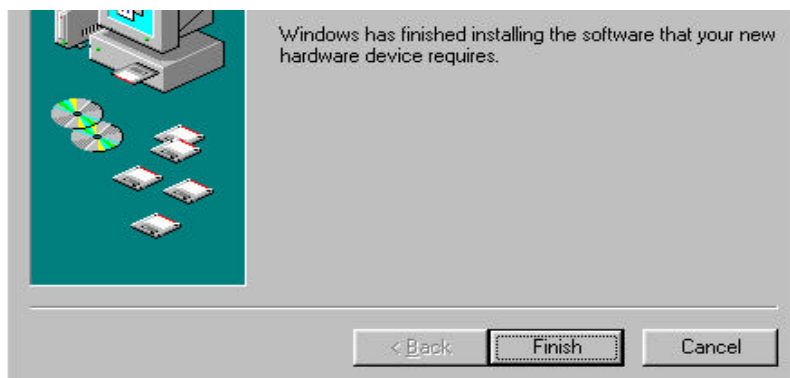
- viii Click **Specify a location**. Type **D:** (depending on your CD drive) on your PC and click **Next**.



- ix Click **Next** again to proceed with installation with the driver.



- x. Click **Finish** to complete the driver installation.

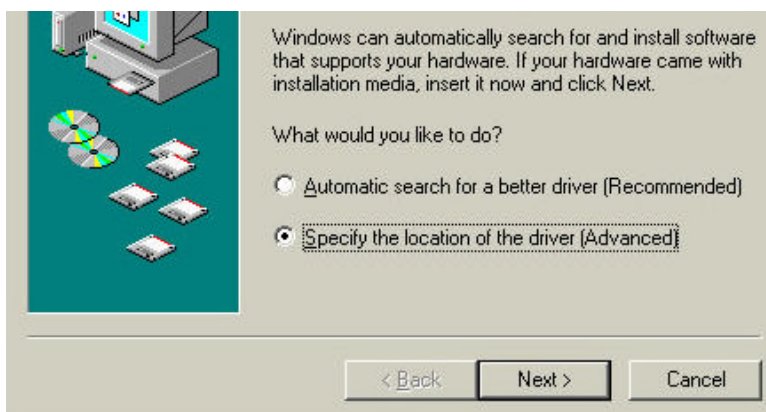


For Windows 98 Second Edition users, depending on your system configurations, you may be prompted for your Windows CD-ROM. Have it ready by your side.

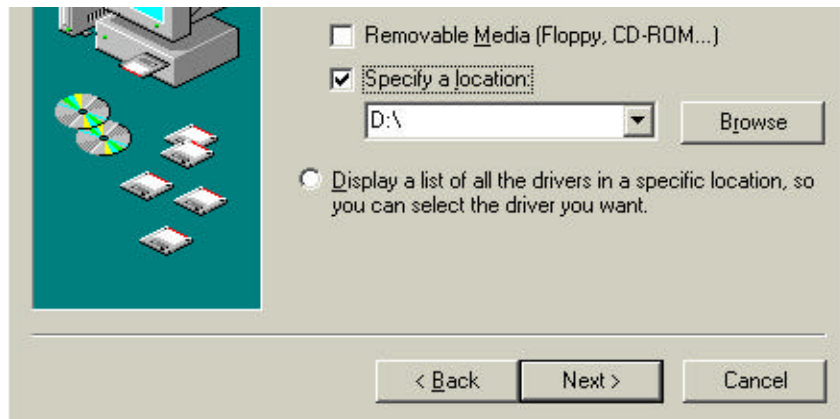
- xi. Please restart PC when prompted.

2.2 For Windows® Me

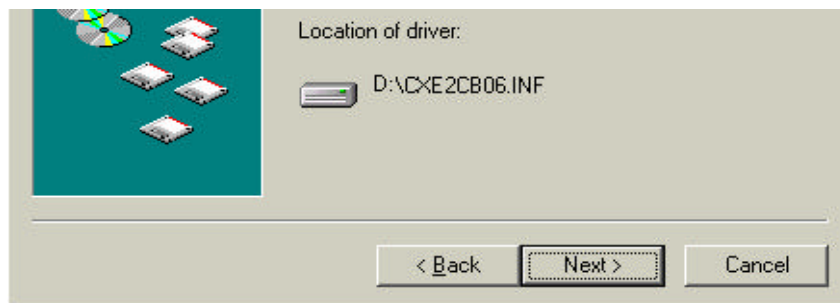
- i. Place the **Installation CD** into your CD-ROM Drive. Select **Specify the location of the driver (Advanced)** and click **Next**



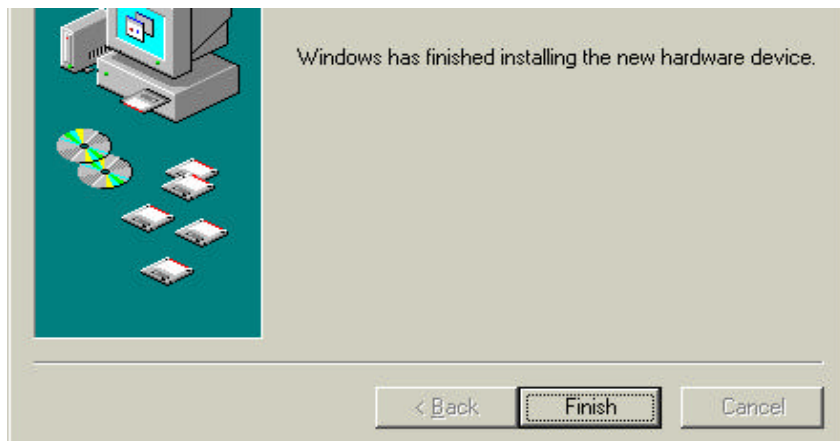
- ii. Click **Specify a location**. Type **D:** (depending on your CD drive) on your PC and click **Next**.



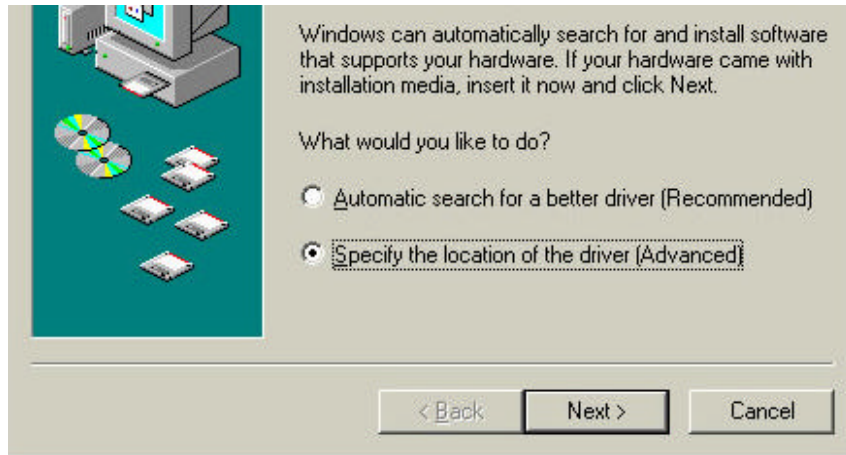
- iii. Click **Next** again to proceed with installation with the driver.



- iv. Click **Finish** to complete the driver installation.



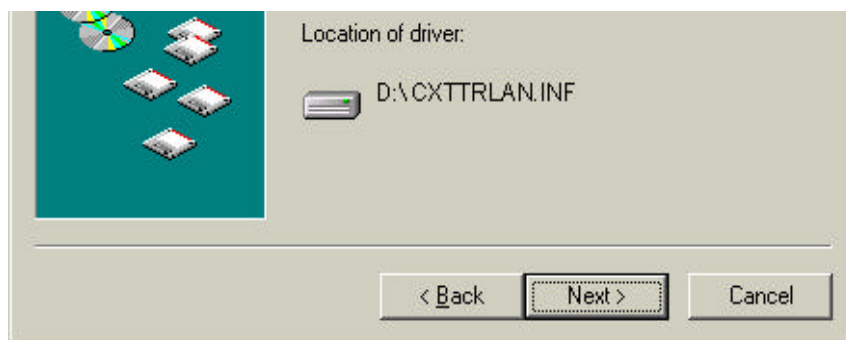
- v. After installation of USB Network Interface is completed, another screen shows the installation of the USB Network adapter. At the following prompt, Select **Specify the location of the driver (Advanced)** and click **Next**.



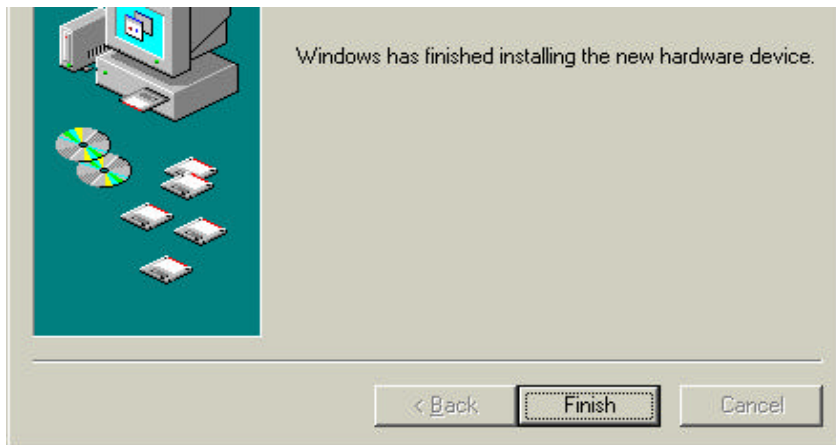
- vi. Click **Specify a location**. Type **D:** (depending on your CD drive) on your PC and click **Next**.



- vii. Click **Next** again to proceed with installation with the driver.



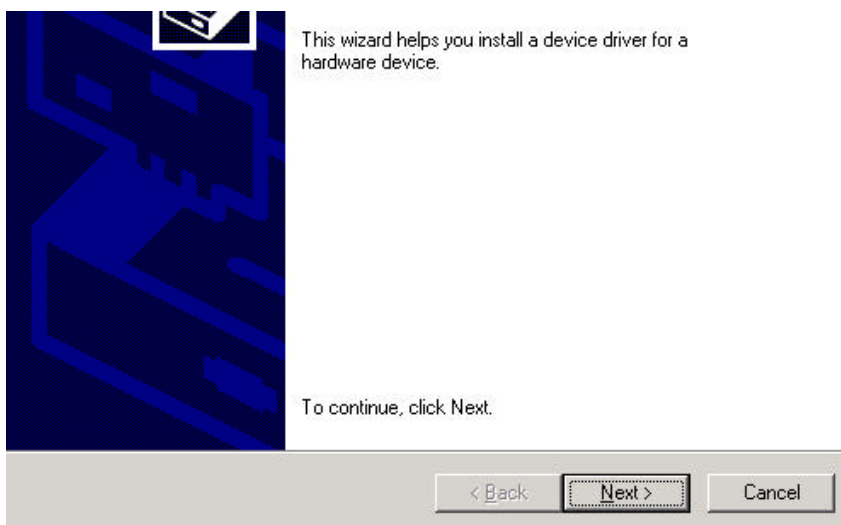
- viii. Click **Finish** to complete the driver installation.



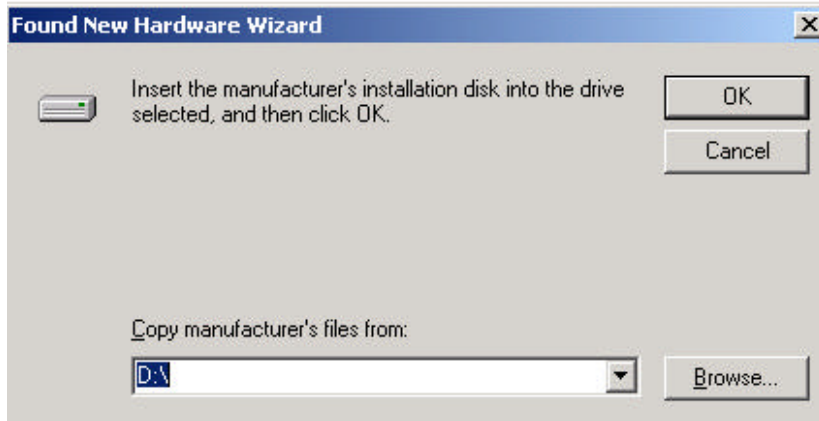
- ix. Please restart PC when prompted.

2.2 For Windows® 2000

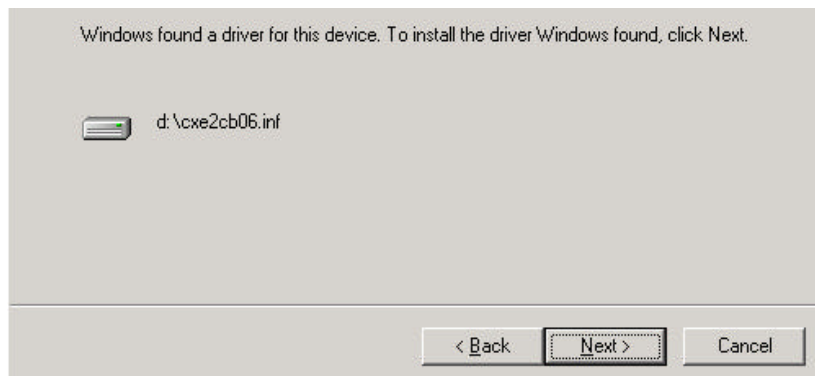
- i. Place the **Installation CD** into your CD-ROM Drive. Click **Next**.



- ii. Click **Search for a suitable driver for my device (recommended)** and click **Next**
- iii. Select **Specify a location** and click **Next**.
- iv. Type **D:** (depending on your CD drive) on your PC and click **OK**.



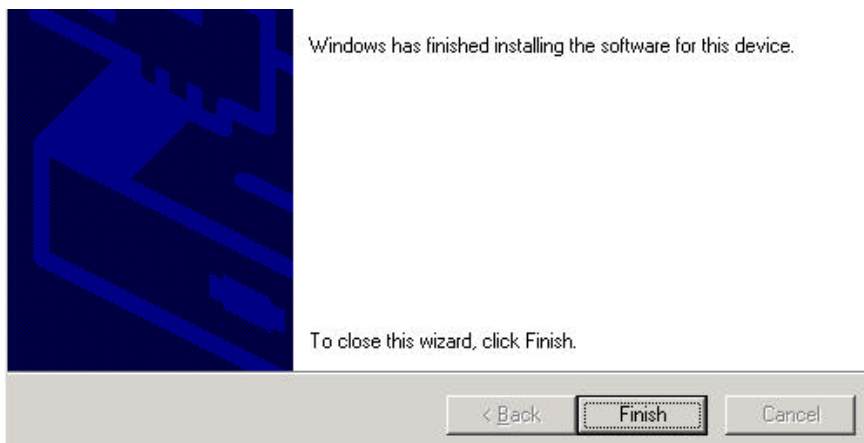
- v. Click **Next** again to proceed with installation with the driver.



- vi. Prompted with digital signature. Click **Yes** to continue with installation with the driver.



- vii. Click **Finish** to continue with the driver installation.

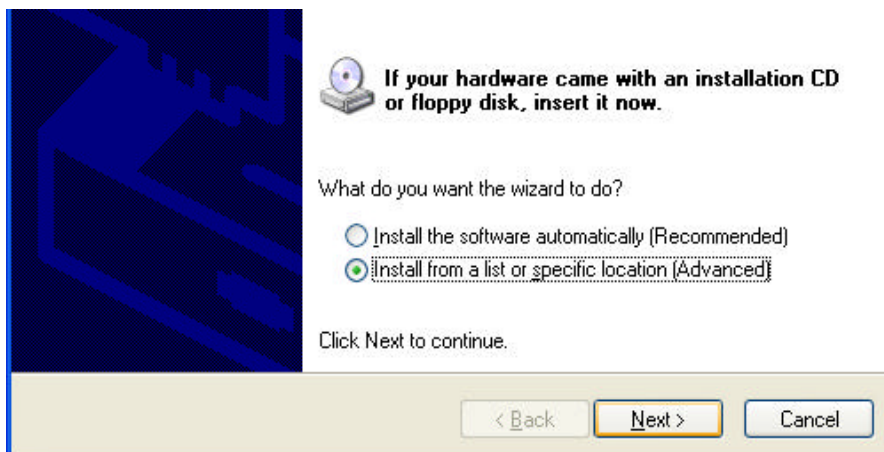


- viii. Prompted with digital signature. Click **Yes** to complete the driver installation.

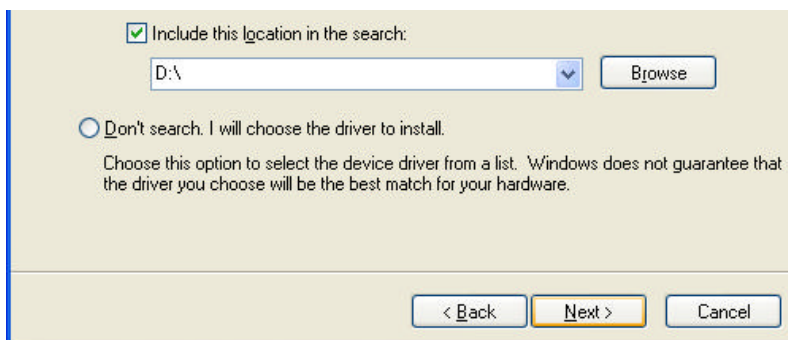


2.3 For Windows® XP

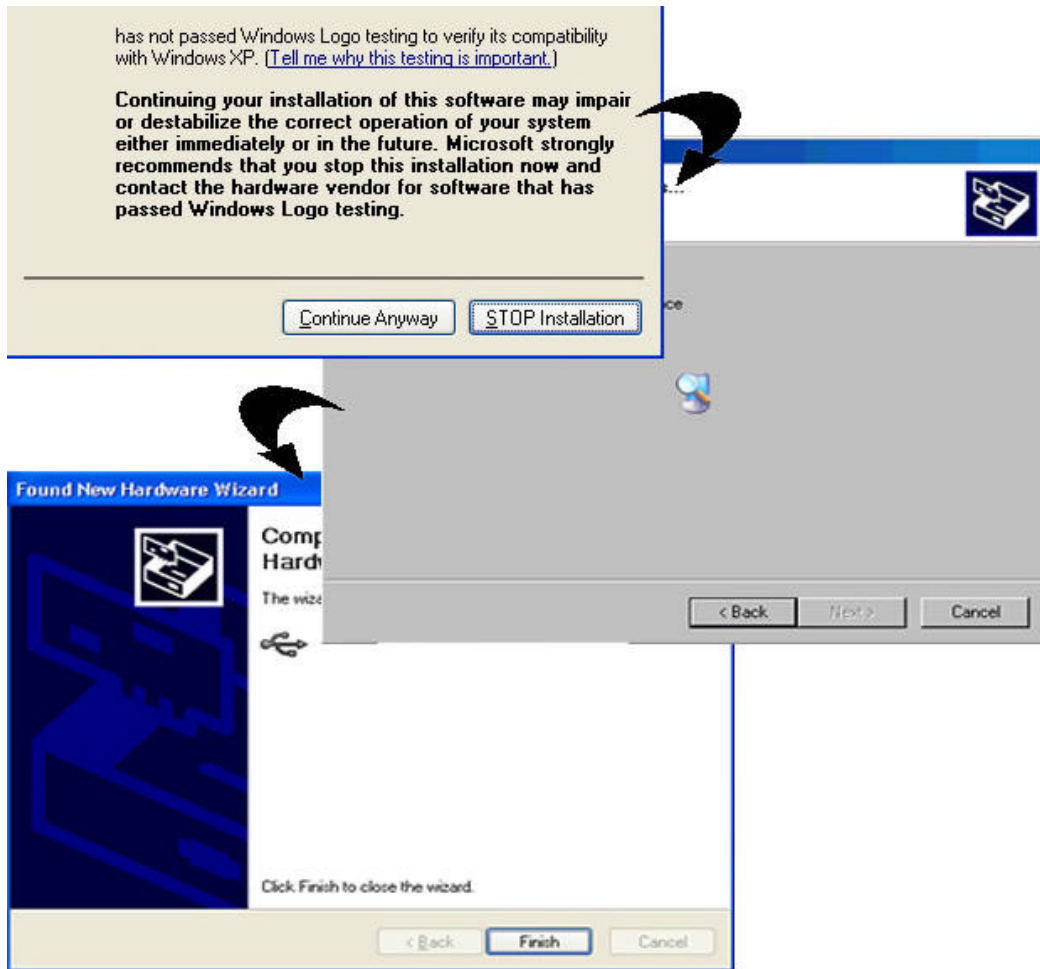
- i. Place the **Installation CD** into your CD-ROM Drive. At the following prompt, select **Install from a list or specific location (Advanced)** and click **Next**.



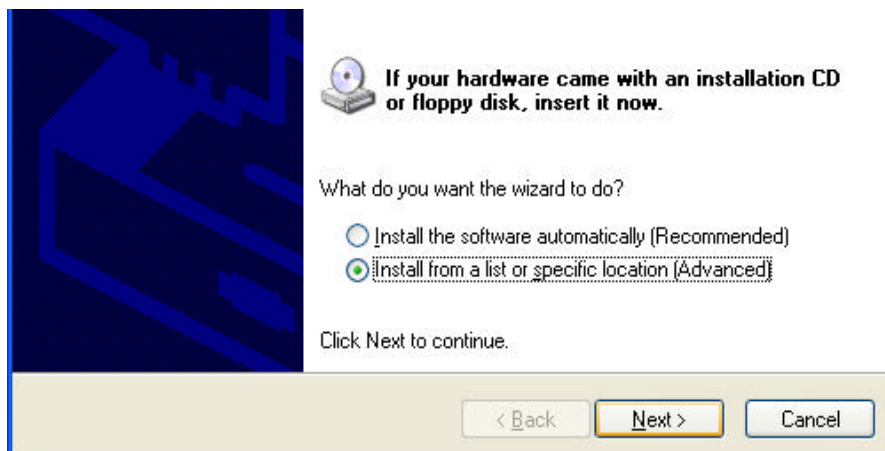
- ii. Click **Include this location in the search**.
- iii. Type **D:** (depending on your CD drive) on your PC and click **Next**.



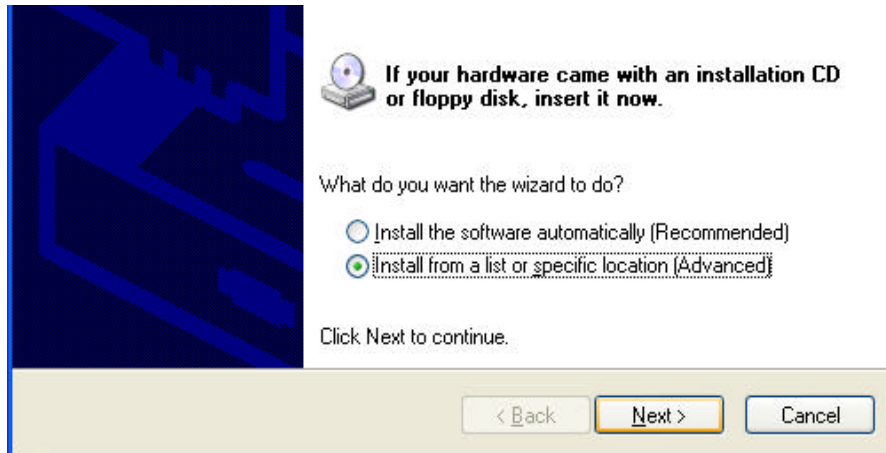
- iv. Along the way you would encounter a screen that says "Software Installation". This is normal, just click **Continue Anyway**.



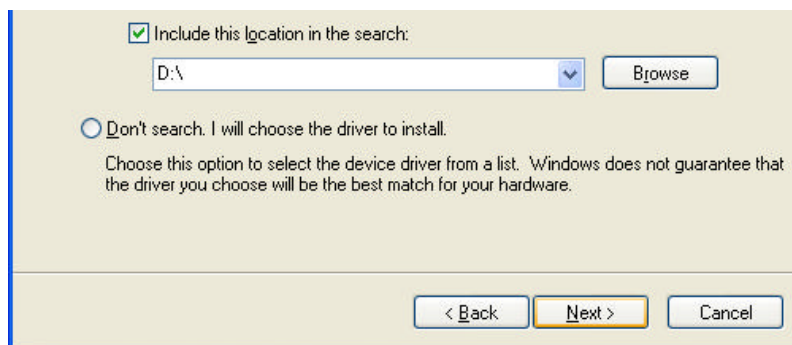
- v. Click **Finish**.
- vi. At the following prompt, select **Install from a list or specific location (Advanced)** and click **Next**.



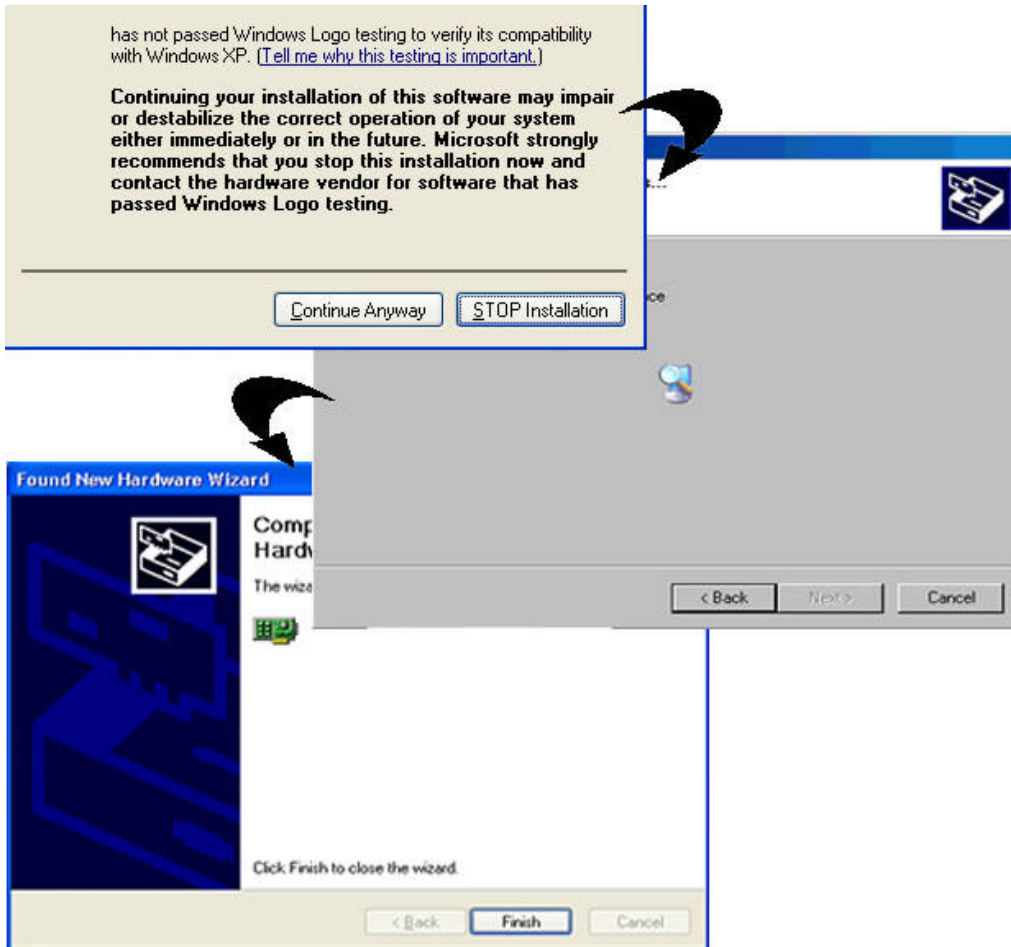
- vii. After installation of USB Network Interface is completed, another screen shows the installation of the USB Network adapter. At the following prompt, select **Install from a list or specific location (Advanced)** and click **Next**.



- viii. Click **Include this location in the search**.
- ix. Type **D:** (depending on your CD drive) on your PC and click **Next**.



- x. Along the way you would encounter a screen that says "Software Installation". This is normal, just click **Continue Anyway**.



- xi. Click **Finish**.

Step 3: Configuring Your Internet Browser

3.1 Microsoft® Internet Explorer™ (based on IE 5.5)

- i From your Windows desktop, double-click on your Internet Explorer icon to launch your Browser.
 - ii From the Menu, click **Tools** and select **Internet Options...**
 - iii Select the **Connection** tab. Click the field, '**Never dial a connection**'. (This option will be grayed off if you have not installed an analog modem on your computer/notebook before. Proceed with **3.1 iv**).
 - iv Click the **LAN Settings...** button. Ensure that your **Proxy Server** is not enabled.
 - v Click **OK** to close the dialog box.
- You may now proceed to **Step 4** to establish your Internet connection.

3.2 Netscape® Navigator

- i From your Windows desktop, double-click on your Navigator icon to launch your Browser.
 - ii Depending on your Netscape versions, carry out one of the following instructions: Click **Options > Network Preferences**. Select **Proxies**. Ensure that the **No Proxies** option is selected.
OR
Click **Edit > Preferences**. Select **Advanced** and click **Proxies**. Ensure that the option **Direct Connection to the Internet** is enabled.
 - iii Click **OK** for changes to take effect.
- You may now proceed to **Step 4** to establish your Internet connection.

Step 4: Connecting to the Internet

- i After installing the modem, please go to your desktop, click on the ADSL USB Modem Login icon.



- ii You will be prompted to login to the Modem. Type admin for the User name and leave password field blank. Click OK to continue

 A screenshot of a login dialog box titled 'Home Gateway'. It contains a 'User name:' field with a dropdown menu showing 'admin', a 'Password:' field which is empty, and a checkbox labeled 'Remember my password' which is unchecked. At the bottom are 'OK' and 'Cancel' buttons.

- iii Click '**Login Settings**' and key in your **Username** and **password** and click **Save**.
- iv Click **Connect**. You are now connected to the Internet.

Uninstalling Your ADSL USB Modem Driver

- i Click **Start** on the desktop and select **Settings** and double click on **Control Panel** and select **Add/Remove Programs**.
- ii Select '**ADSL USB Modem Network Adapter**' and click Add/Remove to uninstall the modem driver.